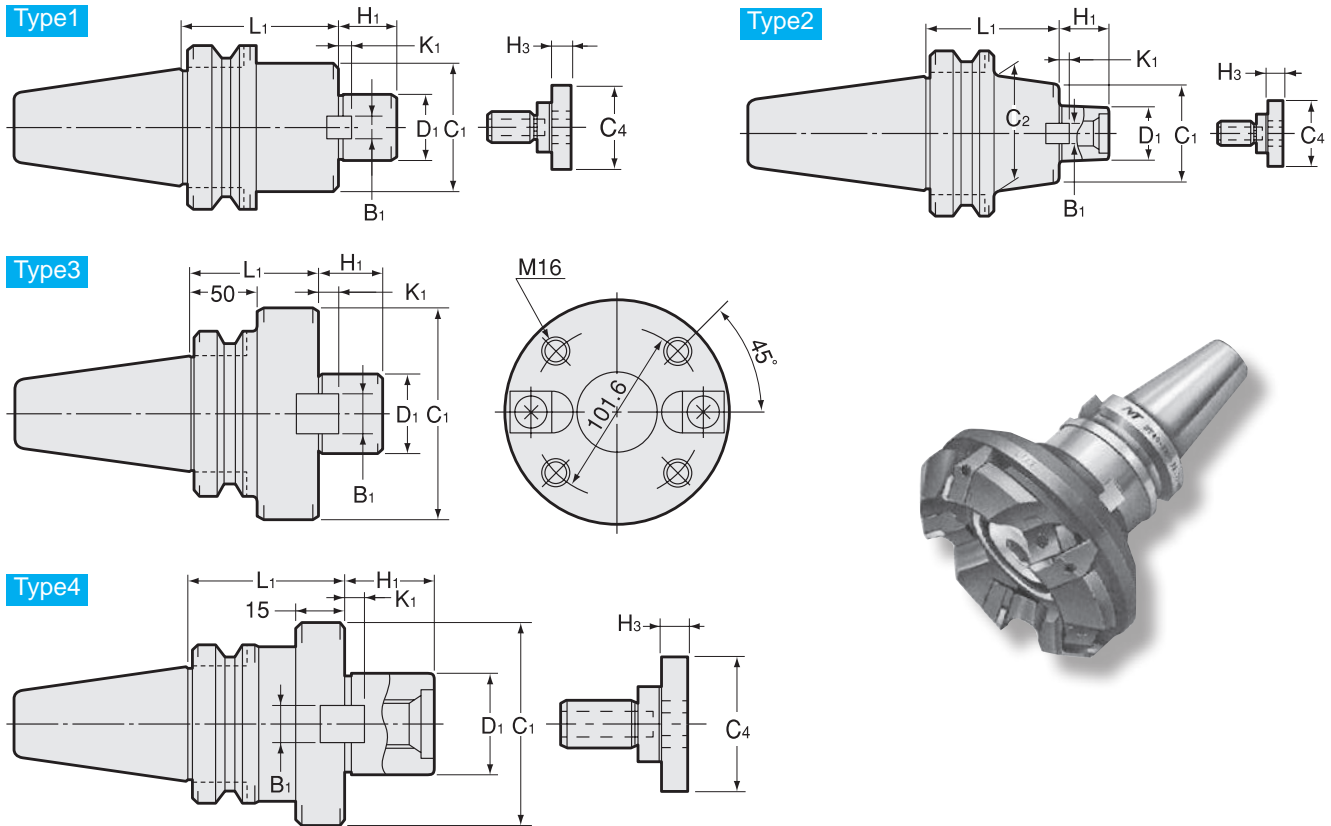


Face Mill Arbor

● For JIS B4113 face mill.



Metric Sizes Unit : Metric

Code	Model	Type	D1 (h6)	L1	C1	C2	H1	B1	K1	C4	H3	kg	Clamp Bolt	Cutter dia. example
0770 00125045	BT30 -FMA25.4 -45	4	25.4	45	50	—	22	9.5	5	33	10	0.9	MBA-M12	80
0770 00125060	-60	4	25.4	60	50	—	22	9.5	5	33	10	1.1		
0770 00125090	-90	4	25.4	90	50	—	22	9.5	5	33	10	1.5		
0770 00325045	BT40 -FMA25.4 -45	1	25.4	45	50	—	22	9.5	5	33	10	1.5	MBA-M12	80
0770 00325090	-90	1	25.4	90	50	—	22	9.5	5	33	10	2.1		
0770 00331045	BT40 -FMA31.75 -45	1	31.75	45	60	—	30	12.7	7	40	10	1.7		
0770 00331075	-75	1	31.75	75	60	—	30	12.7	7	40	10	2.3	MBA-M16	100
0770 00338060	BT40 -FMA38.1 -60	4	38.1	60	80	—	34	15.9	9	50	14	2.5		
0770 00338090	-90	4	38.1	90	80	—	34	15.9	9	50	14	3.3	MBA-M20	125
0770 00525045	BT50 -FMA25.4 -45	1	25.4	45	50	—	22	9.5	5	33	10	4.0		
0770 00525090	-90	2	25.4	90	50	70	22	9.5	5	33	10	5.0	MBA-M12	80
0770 00525150	-150	2	25.4	150	50	70	22	9.5	5	33	10	6.4		
0770 00531045	BT50 -FMA31.75 -45	1	31.75	45	60	—	30	12.7	7	40	10	4.1		
0770 00531075	-75	2	31.75	75	60	70	30	12.7	7	40	10	4.9	MBA-M16	100
0770 00531105	-105	2	31.75	105	60	70	30	12.7	7	40	10	5.7		
0770 00538045	BT50 -FMA38.1 -45	1	38.1	45	80	—	34	15.9	9	50	14	4.4	MBA-M20	125
0770 00538075	-75	1	38.1	75	80	—	34	15.9	9	50	14	5.6		
0770 00550045	BT50 -FMA50.8 -45	1	50.8	45	100	—	36	19.05	10	65	14	5.0	MBA-M24	160
0770 00550075	-75	1	50.8	75	100	—	36	19.05	10	65	14	6.8		
0770 00547075	BT50 -FMA47.625 -75	3	47.625	75	128.57	—	38	25.4	12.5	—	—	7.9	M16	200

Clamp bolt is Included.

Ordering Example

BT40 - FMA 25.4 - 90

Shank size

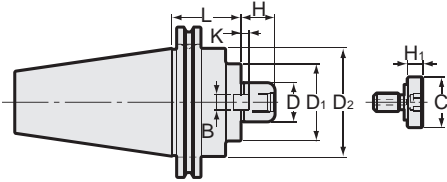
D1

Projection length (L)

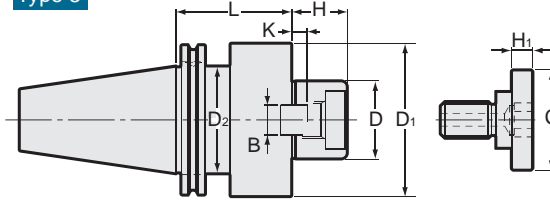
Face Mill Arbor

● For JIS B4113 face mill.

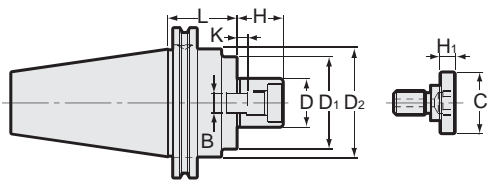
Type 1



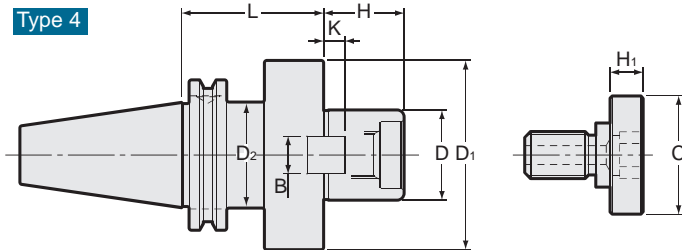
Type 3



Type 2



Type 4



Unit : Inch

Code	Model	Type	Dh6	L	D1	D2	H	B	K	C	H1	kg	Bolt
2050 00419045	CAT40 -FMA19.05 -45	1	0.750	1.772	1.772	1.750	0.630	0.315	0.138	0.874	0.354	1.3	MBA-M10
2050 00419060	-60	1	0.750	2.362	1.772	1.750	0.630	0.315	0.138	0.874	0.354	1.5	MBA-M10
2050 00419090	-90	1	0.750	3.543	1.772	1.750	0.630	0.315	0.138	0.874	0.354	1.8	MBA-M10
2050 00425045	CAT40 -FMA25.4 -45	3	1.000	1.772	1.969	1.750	0.866	0.374	0.197	1.299	0.394	1.4	MBA-M12
2050 00425090	-90	3	1.000	3.543	1.969	1.750	0.866	0.374	0.197	1.299	0.394	2.1	MBA-M12
2050 00431060	CAT40 -FMA31.75 -60	3	1.250	2.362	2.362	1.750	1.181	0.500	0.276	1.575	0.394	1.8	MBA-M16
2050 00431075	-75	3	1.250	2.953	2.362	1.750	1.181	0.500	0.276	1.575	0.394	2.1	MBA-M16
2050 00438060	CAT40 -FMA38.1 -60	4	1.500	2.362	3.150	1.750	1.339	0.626	0.354	1.969	0.551	2.5	MBA-M20
2050 00438090	-90	4	1.500	3.543	3.150	1.750	1.339	0.626	0.354	1.969	0.551	3.4	MBA-M20
2050 00525045	CAT50 -FMA25.4 -45	1	1.000	1.772	1.969	2.750	0.866	0.374	0.197	1.299	0.394	3.5	MBA-M12
2050 00525090	-90	1	1.000	3.543	1.969	2.750	0.866	0.374	0.197	1.299	0.394	4.2	MBA-M12
2050 00525150	-150	1	1.000	5.906	1.969	2.750	0.866	0.374	0.197	1.299	0.394	5.1	MBA-M12
2050 00531045	CAT50 -FMA31.75 -45	2	1.250	1.772	2.362	2.750	1.181	0.500	0.276	1.575	0.394	3.6	MBA-M16
2050 00531075	-75	2	1.250	2.953	2.362	2.750	1.181	0.500	0.276	1.575	0.394		MBA-M16
2050 00531105	-105	2	1.250	4.134	2.362	2.750	1.181	0.500	0.276	1.575	0.394		MBA-M16
2050 00538045	CAT50 -FMA38.1 -45	2	1.500	1.772	3.150	2.750	1.339	0.626	0.354	1.969	0.551	4.0	MBA-M20
2050 00538075	-75	2	1.500	2.953	3.150	2.750	1.339	0.626	0.354	1.969	0.551	5.2	MBA-M20
2050 00550075	-75	3	2.000	2.953	3.937	2.750	1.417	0.750	0.394	2.559	0.551	6.2	MBA-M24

Clamp bolt is included.

Ordering Example

CAT40 - FMA 19.05 - 45

Shank size

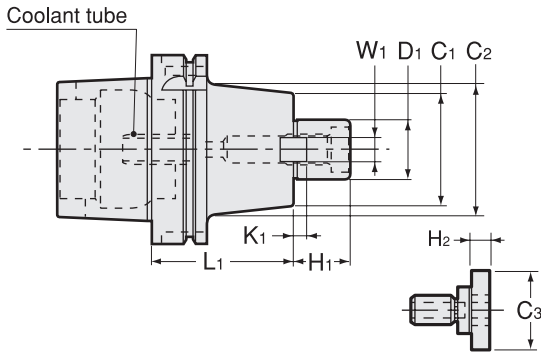
D1

Projection length (L)

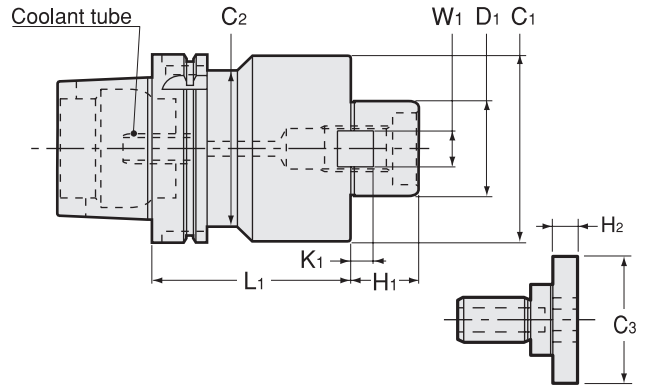
Face Mill Arbor

● For JIS B4113 face mill.

Type1



Type2



● Coolant tube is included.

Metric Sizes

Unit : Metric

Code	Model	Type	D1	L1	H1	C1	C2	W1	K1	C3	H2	kg	Clamp Bolt	Cutter dia. Example
5340 13025060	HSK40A -FMA25.4 -60	2	25.4	60	22	50	34	9.5	5	33	10	0.7	MBA-M12	80
5340 14025060	HSK50A -FMA25.4 -60	2	25.4	60	22	50	42	9.5	5	33	10	0.9	MBA-M12	80
5340 15025060	HSK63A -FMA25.4 -60	1	25.4	60	22	50	50	9.5	5	33	10	1.3	MBA-M12	80
5340 15025090	-90	1	25.4	90	22	50	50	9.5	5	33	10	1.9		
5340 15025120	-120	1	25.4	120	22	50	50	9.5	5	33	10	2.3		
5340 15031060	HSK63A -FMA31.75 -60	2	31.75	60	30	60	53	12.7	7	40	10	1.7	MBA-M16	100
5340 15031090	-90	2	31.75	90	30	60	53	12.7	7	40	10	2.5		
5340 15031120	-120	2	31.75	120	30	60	53	12.7	7	40	10	3.3		
5340 15038060	HSK63A -FMA38.1 -60	2	38.1	60	34	80	48	15.9	9	50	14	2.1	MBA-M20	125
5340 15038090	-90	2	38.1	90	34	80	53	15.9	9	50	14	3.0		
5340 15038120	-120	2	38.1	120	34	80	53	15.9	9	50	14	4.4		
5340 17025075	HSK100A -FMA25.4 -75	1	25.4	75	22	50	70	9.5	5	33	10	3.2	MBA-M12	80
5340 17025105	-105	1	25.4	105	22	50	70	9.5	5	33	10	3.9		
5340 17025135	-135	1	25.4	135	22	50	70	9.5	5	33	10	4.6		
5340 17031075	HSK100A -FMA31.75 -75	1	31.75	75	30	60	70	12.7	7	40	10	3.5	MBA-M16	100
5340 17031105	-105	1	31.75	105	30	60	70	12.7	7	40	10	4.3		
5340 17031135	-135	1	31.75	135	30	60	70	12.7	7	40	10	5.1		
5340 17038075	HSK100A -FMA38.1 -75	1	38.1	75	34	80	80	15.9	9	50	14	4.4	MBA-M20	125
5340 17038105	-105	1	38.1	105	34	80	80	15.9	9	50	14	5.7		
5340 17038135	-135	1	38.1	135	34	80	80	15.9	9	50	14	7.0		
5340 17050075	HSK100A -FMA50.8 -75	2	50.8	75	36	99	83	19.05	10	65	14	5.7	MBA-M24	150
5340 17050105	-105	2	50.8	105	36	99	83	19.05	10	65	14	7.7		
5340 17050135	-135	2	50.8	135	36	99	83	19.05	10	65	14	9.7		

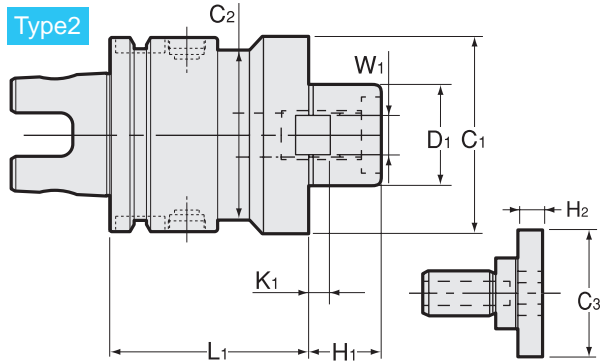
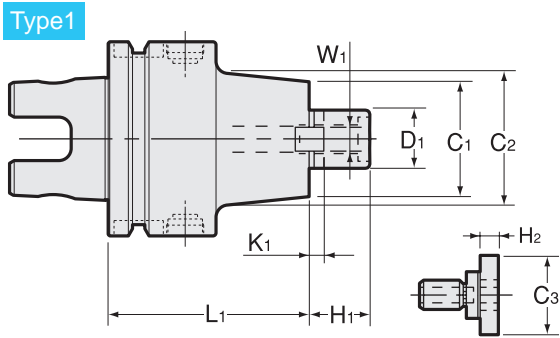
Clamp bolt is Included.

Ordering Example

HSK63A - FMA 25.4 - 60
 Shank size D1 Projection length (L)

Face Mill Arbor

● For JIS B4113 face mill.



Metric Sizes

Unit : Metric

Code	Model	Type	D1	L1	H1	C1	C2	W1	K1	C3	H2	Clamp Bolt	Cutter dia. Example
1320 01125060	UTS5040 -FMA25.4 -60-H	1	25.4	60	22	50	50	9.5	5	33	10	MBA-M12	75
1320 0 ※ 225060	UTS6350 -FMA25.4 -60	1	25.4	60	22	50	50	9.5	5	33	10	MBA-M12	75
1320 0 ※ 225090	-90	1	25.4	90	22	50	50	9.5	5	33	10		
1320 0 ※ 225120	-120	1	25.4	120	22	50	50	9.5	5	33	10		
1320 0 ※ 231060	UTS6350 -FMA31.75 -60	1	31.75	60	30	60	60	12.7	7	40	10	MBA-M16	100
1320 0 ※ 231090	-90	1	31.75	90	30	60	60	12.7	7	40	10		
1320 0 ※ 231120	-120	1	31.75	120	30	60	60	12.7	7	40	10		
1320 0 ※ 238060	UTS6350 -FMA38.1 -60	2	38.1	60	34	80	63	15.9	9	50	14	MBA-M20	125
1320 0 ※ 238090	-90	2	38.1	90	34	80	63	15.9	9	50	14		
1320 0 ※ 238120	-120	2	38.1	120	34	80	63	15.9	9	50	14		
1320 0 ※ 325075	UTS10080 -FMA25.4 -75	1	25.4	75	22	50	85	9.5	5	33	10	MBA-M12	75
1320 0 ※ 325105	-105	1	25.4	105	22	50	85	9.5	5	33	10		
1320 0 ※ 325135	-135	1	25.4	135	22	50	85	9.5	5	33	10		
1320 0 ※ 331075	UTS10080 -FMA31.75 -75	1	31.75	75	30	60	85	12.7	7	40	10	MBA-M16	100
1320 0 ※ 331105	-105	1	31.75	105	30	60	85	12.7	7	40	10		
1320 0 ※ 331135	-135	1	31.75	135	30	60	85	12.7	7	40	10		
1320 0 ※ 338075	UTS10080 -FMA38.1 -75	1	38.1	75	34	80	85	15.9	9	50	14	MBA-M20	125
1320 0 ※ 338105	-105	1	38.1	105	34	80	85	15.9	9	50	14		
1320 0 ※ 338135	-135	1	38.1	135	34	80	85	15.9	9	50	14		
1320 0 ※ 350075	UTS10080 -FMA50.8 -75	1	50.8	75	36	99	99	19.05	10	65	14	MBA-M24	150
1320 0 ※ 350105	-105	1	50.8	105	36	99	99	19.05	10	65	14		
1320 0 ※ 350135	-135	1	50.8	135	36	99	99	19.05	10	65	14		

When placing an order, please specify high or low pressure. For high pressure type, please add (-H) on end of the description.

1. UTS5040 is available in high pressure only.
2. Clamp bolt is included.

Ordering Example

Low pressure type

0 ~ 1.0MPa (UTS10080 : 0 ~ 2.0MPa)

UTS6350 - FMA 25.4 - 60

Shank size

D1

L1

Ordering Example

High pressure type

1.1 ~ 7.0MPa (UTS10080 : 2.1 ~ 7.0MPa)

UTS6350 - FMA 25.4 - 60 - H

Shank size

D1

L1

High pressure type