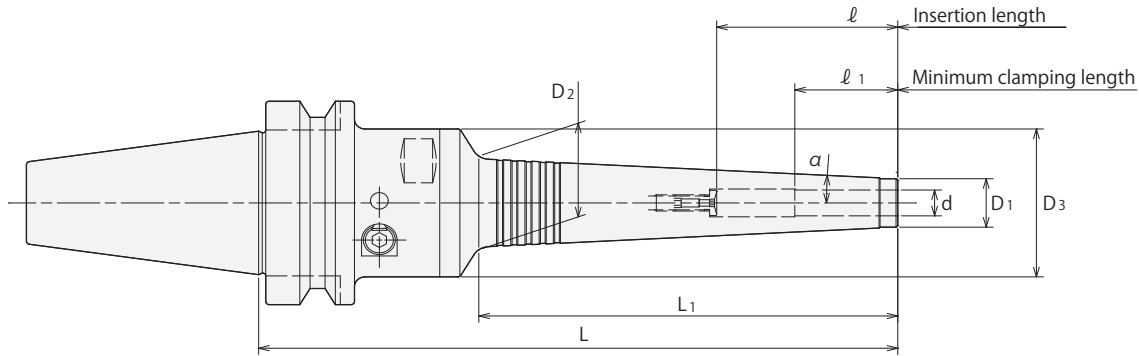


PHC · S New

Slim Hydro Chuck

- Perfect choice for tight space applications, such as endmill finishing, drilling and reaming on 5-axis machines.



Metric Sizes

Unit : Metric

Code	Model	d	L	L1	D1	D2	D3	l	l1	α	Kg	Hex. Wrench (Option)
3700 00106135	BT30 -PHC06S -135	6	135	71	13	20.5	46	37	29	3°	1.0	L-4T
3700 00106150	-150	6	150	87	13	22.2	46	37	29	3°	1.0	
3700 00106165	-165	6	165	102	13	23.7	46	37	29	3°	1.1	
3700 00106180	-180	6	180	118	13	25.4	46	37	29	3°	1.1	
3700 00107135	BT30 -PHC07S -135	7	135	71	14	21.5	46	37	29	3°	1.0	
3700 00107150	-150	7	150	87	14	23.2	46	37	29	3°	1.0	
3700 00107165	-165	7	165	102	14	24.7	46	37	29	3°	1.1	
3700 00107180	-180	7	180	118	14	26.4	46	37	29	3°	1.1	
3700 00108135	BT30 -PHC08S -135	8	135	72	15	22.6	46	50	29	3°	1.0	
3700 00108150	-150	8	150	87	15	24.2	46	50	29	3°	1.0	
3700 00108165	-165	8	165	103	15	25.8	46	50	29	3°	1.1	
3700 00108180	-180	8	180	118	15	27.4	46	50	29	3°	1.2	
3700 00109135	BT30 -PHC09S -135	9	135	72	16	23.6	46	50	40	3°	1.0	
3700 00109150	-150	9	150	87	16	25.2	46	50	40	3°	1.1	
3700 00109165	-165	9	165	103	16	26.8	46	50	40	3°	1.1	
3700 00109180	-180	9	180	118	16	28.4	46	50	40	3°	1.2	
3700 00110135	BT30 -PHC10S -135	10	135	72	17	24.6	46	50	40	3°	1.0	
3700 00110150	-150	10	150	88	17	26.3	46	50	40	3°	1.1	
3700 00110165	-165	10	165	103	17	27.8	46	50	40	3°	1.1	
3700 00110180	-180	10	180	119	17	29.5	46	50	40	3°	1.2	
3700 00111135	BT30 -PHC11S -135	11	135	73	18	25.7	46	50	40	3°	1.0	
3700 00111150	-150	11	150	88	18	27.3	46	50	40	3°	1.1	
3700 00111165	-165	11	165	104	18	29.0	46	50	40	3°	1.2	
3700 00111180	-180	11	180	119	18	30.5	46	50	40	3°	1.2	
3700 00112135	BT30 -PHC12S -135	12	135	73	19	26.7	46	70	40	3°	1.0	
3700 00112150	-150	12	150	88	19	28.3	46	70	40	3°	1.1	
3700 00112165	-165	12	165	104	19	30.0	46	70	40	3°	1.2	
3700 00112180	-180	12	180	119	19	31.5	46	70	40	3°	1.2	
3700 00306135	BT40 -PHC06S -135	6	135	71	13	20.5	46	37	29	3°	1.5	L-4T
3700 00306150	-150	6	150	87	13	22.2	46	37	29	3°	1.5	
3700 00306165	-165	6	165	102	13	23.7	46	37	29	3°	1.6	
3700 00306180	-180	6	180	118	13	25.4	46	37	29	3°	1.6	
3700 00307135	BT40 -PHC07S -135	7	135	71	14	21.5	46	37	29	3°	1.5	
3700 00307150	-150	7	150	87	14	23.2	46	37	29	3°	1.5	
3700 00307165	-165	7	165	102	14	24.7	46	37	29	3°	1.6	
3700 00307180	-180	7	180	118	14	26.4	46	37	29	3°	1.6	
3700 00308135	BT40 -PHC08S -135	8	135	72	15	22.6	46	50	29	3°	1.5	
3700 00308150	-150	8	150	87	15	24.2	46	50	29	3°	1.5	
3700 00308165	-165	8	165	103	15	25.8	46	50	29	3°	1.6	
3700 00308180	-180	8	180	118	15	27.4	46	50	29	3°	1.7	
3700 00309135	BT40 -PHC09S -135	9	135	72	16	23.6	46	50	40	3°	1.5	
3700 00309150	-150	9	150	87	16	25.2	46	50	40	3°	1.6	
3700 00309165	-165	9	165	103	16	26.8	46	50	40	3°	1.6	
3700 00309180	-180	9	180	118	16	28.4	46	50	40	3°	1.7	

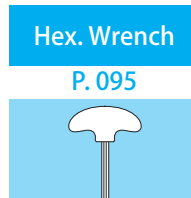
Metric Sizes

Unit : Metric

Code	Model	d	L	L1	D1	D2	D3	ℓ	ℓ 1	α	Kg	Hex. Wrench (Option)
3700 00310135	BT40 -PHC10S -135	10	135	72	17	24.6	46	50	40	3°	1.5	L-4T
3700 00310150	-150	10	150	88	17	26.3	46	50	40	3°	1.6	
3700 00310165	-165	10	165	103	17	27.8	46	50	40	3°	1.6	
3700 00310180	-180	10	180	119	17	29.5	46	50	40	3°	1.7	
3700 00311135	BT40 -PHC11S -135	11	135	73	18	25.7	46	50	40	3°	1.5	
3700 00311150	-150	11	150	88	18	27.3	46	50	40	3°	1.6	
3700 00311165	-165	11	165	104	18	29.0	46	50	40	3°	1.7	
3700 00311180	-180	11	180	119	18	30.5	46	50	40	3°	1.7	
3700 00312135	BT40 -PHC12S -135	12	135	73	19	26.7	46	70	40	3°	1.5	
3700 00312150	-150	12	150	88	19	28.3	46	70	40	3°	1.6	
3700 00312165	-165	12	165	104	19	30.0	46	70	40	3°	1.7	
3700 00312180	-180	12	180	119	19	31.5	46	70	40	3°	1.8	
3700 00316135	BT40 -PHC16S -135	16	135	72	23	30.6	52.5	75	40	3°		
3700 00316165	-165	16	165	103	23	33.8	52.5	80	40	3°		
3700 00316180	-180	16	180	119	23	35.5	52.5	80	40	3°		
3700 00320135	BT40 -PHC20S -135	20	135	63	28	34.7	62	70	40	3°		
3700 00320165	-165	20	165	93	28	37.8	62	100	40	3°		
3700 00320180	-180	20	180	109	28	39.5	62	100	40	3°		
3700 00325135	BT40 -PHC25S -135	25	135	65	37	43.9	62	70	50	3°		
3700 00325165	-165	25	165	96	37	47.1	62	100	50	3°		
3700 00325180	-180	25	180	112	37	48.8	62	110	50	3°		
3700 00506150	BT50 -PHC06S -150	6	150	71	13	20.5	46	37	29	3°	4.1	L-4T
3700 00506165	-165	6	165	87	13	22.2	46	37	29	3°	4.1	
3700 00506180	-180	6	180	102	13	23.7	46	37	29	3°	4.2	
3700 00506195	-195	6	195	118	13	25.4	46	37	29	3°	4.2	
3700 00507150	BT50 -PHC07S -150	7	150	71	14	21.5	46	37	29	3°	4.1	
3700 00507165	-165	7	165	87	14	23.2	46	37	29	3°	4.1	
3700 00507180	-180	7	180	102	14	24.7	46	37	29	3°	4.2	
3700 00507195	-195	7	195	118	14	26.4	46	37	29	3°	4.2	
3700 00508150	BT50 -PHC08S -150	8	150	72	15	22.6	46	50	29	3°	4.1	
3700 00508165	-165	8	165	87	15	24.2	46	50	29	3°	4.1	
3700 00508180	-180	8	180	103	15	25.8	46	50	29	3°	4.2	
3700 00508195	-195	8	195	118	15	27.4	46	50	29	3°	4.2	
3700 00509150	BT50 -PHC09S -150	9	150	72	16	23.6	46	50	40	3°	4.1	
3700 00509165	-165	9	165	87	16	25.2	46	50	40	3°	4.1	
3700 00509180	-180	9	180	103	16	26.8	46	50	40	3°	4.2	
3700 00509195	-195	9	195	118	16	28.4	46	50	40	3°	4.3	
3700 00510150	BT50 -PHC10S -150	10	150	72	17	24.6	46	50	40	3°	4.1	
3700 00510165	-165	10	165	88	17	26.3	46	50	40	3°	4.2	
3700 00510180	-180	10	180	103	17	27.8	46	50	40	3°	4.2	
3700 00510195	-195	10	195	119	17	29.5	46	50	40	3°	4.3	
3700 00511150	BT50 -PHC11S -150	11	150	73	18	25.7	46	50	40	3°	4.1	
3700 00511165	-165	11	165	88	18	27.3	46	50	40	3°	4.2	
3700 00511180	-180	11	180	104	18	29.0	46	50	40	3°	4.2	
3700 00511195	-195	11	195	119	18	30.5	46	50	40	3°	4.3	
3700 00512150	BT50 -PHC12S -150	12	150	73	19	26.7	46	70	40	3°	4.1	
3700 00512165	-165	12	165	88	19	28.3	46	70	40	3°	4.2	
3700 00512180	-180	12	180	104	19	30.0	46	70	40	3°	4.3	
3700 00512195	-195	12	195	119	19	31.5	46	70	40	3°	4.3	
3700 00516150	BT50 -PHC16S -150	16	150	72	23	30.6	52.5	75	40	3°		
3700 00516180	-180	16	180	103	23	33.8	52.5	80	40	3°		
3700 00516195	-195	16	195	119	23	35.5	52.5	80	40	3°		
3700 00520150	BT50 -PHC20S -150	20	150	63	28	34.7	62	70	40	3°		
3700 00520180	-180	20	180	93	28	37.8	62	100	40	3°		
3700 00520195	-195	20	195	109	28	39.5	62	100	40	3°		
3700 00525150	BT50 -PHC25S -150	25	150	65	37	43.9	62	70	50	3°		
3700 00525180	-180	25	180	96	37	47.1	62	100	50	3°		
3700 00525195	-195	25	195	112	37	48.8	62	110	50	3°		
												L-6T

1. Tool shank diameter tolerance must be within h6.
2. Do not leave the holder with actuating screw tightened when the chuck is empty.
3. Hex-head screws (included) are necessary to plug air hole for center through coolant feed.

Tightening torque (Torque wrench : p.498)		
model	I.D. (d)	Tightening torque (Nm)
	mm	
PHC-S	06 ~ 12, 16	9 ~ 10
PHC-S	20 ~ 25	23 ~ 24

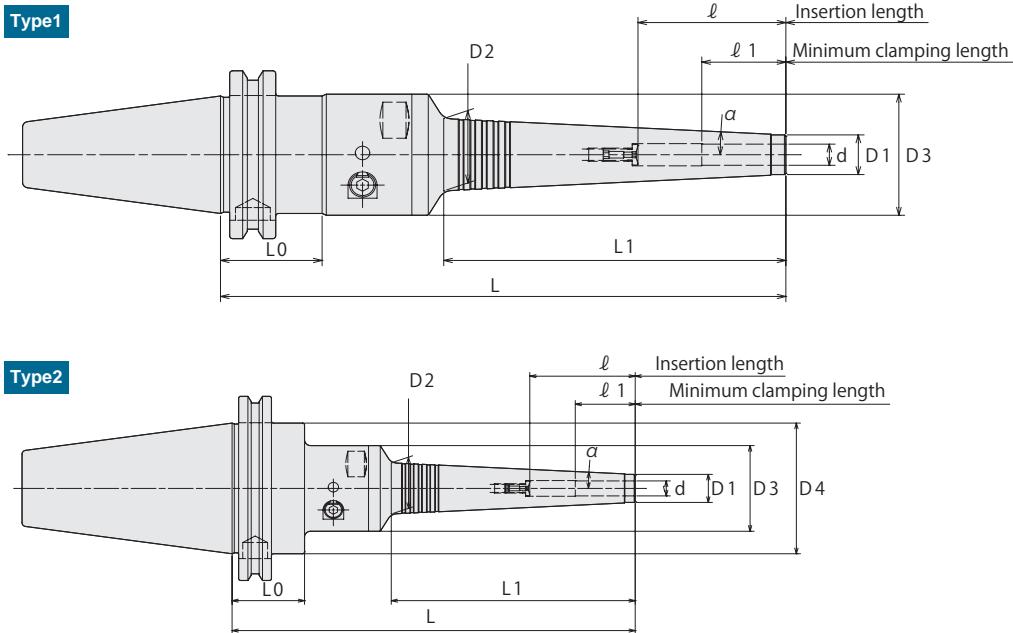


Ordering Example
BT50 - PHC 12 S - 150
 Shank size I.D. (d) Projection length (L)

PHC · S New

Slim Hydro Chuck

- Perfect choice for tight space applications, such as endmill finishing, drilling and reaming on 5-axis machines.



Inch Sizes

Unit : Inch

Code	Model	Type	d	L	L1	D1	D2	D3	D4	L0	ℓ	ℓ1	α	Wrench (Option)
-	CAT40 -PHC0250S -150	1	0.250	5.906	2.795	0.512	0.807	1.811	—	1.380	1.457	1.142	3°	L-4T
-	-165	1	0.250	6.496	3.425	0.512	0.874	1.811	—	1.380	1.457	1.142		
-	-180	1	0.250	7.087	4.016	0.512	0.933	1.811	—	1.380	1.457	1.142		
-	-195	1	0.250	7.677	4.646	0.512	1.000	1.811	—	1.380	1.457	1.142		
-	CAT40 -PHC0312S -150	1	0.312	5.906	2.835	0.591	0.890	1.811	—	1.380	1.969	1.142		
-	-165	1	0.312	6.496	3.425	0.591	0.953	1.811	—	1.380	1.969	1.142		
-	-180	1	0.312	7.087	4.055	0.591	1.016	1.811	—	1.380	1.969	1.142		
-	-195	1	0.312	7.677	4.646	0.591	1.079	1.811	—	1.380	1.969	1.142		
-	CAT40 -PHC0375S -150	1	0.375	5.906	2.835	0.669	0.969	1.811	—	1.380	1.969	1.575		
-	-165	1	0.375	6.496	3.465	0.669	1.035	1.811	—	1.380	1.969	1.575		
-	-180	1	0.375	7.087	4.055	0.669	1.094	1.811	—	1.380	1.969	1.575		
-	-195	1	0.375	7.677	4.685	0.669	1.161	1.811	—	1.380	1.969	1.575		
-	CAT40 -PHC0500S -150	1	0.500	5.906	2.874	0.787	1.091	1.811	—	1.380	2.756	1.575		
-	-165	1	0.500	6.496	3.504	0.787	1.157	1.811	—	1.380	2.756	1.575		
-	-180	1	0.500	7.087	4.094	0.787	1.220	1.811	—	1.380	2.756	1.575		
-	-195	1	0.500	7.677	4.724	0.787	1.283	1.811	—	1.380	2.756	1.575		
-	CAT50 -PHC0250S -150	2	0.250	5.906	2.795	0.512	0.807	1.811	2.750	1.380	1.457	1.142		
-	-165	2	0.250	6.496	3.425	0.512	0.874	1.811	2.750	1.380	1.457	1.142		
-	-180	2	0.250	7.087	4.016	0.512	0.933	1.811	2.750	1.380	1.457	1.142		
-	-195	2	0.250	7.677	4.646	0.512	1.000	1.811	2.750	1.380	1.457	1.142		
-	CAT50 -PHC0312S -150	2	0.312	5.906	2.835	0.591	0.890	1.811	2.750	1.380	1.969	1.142		
-	-165	2	0.312	6.496	3.425	0.591	0.953	1.811	2.750	1.380	1.969	1.142		
-	-180	2	0.312	7.087	4.055	0.591	1.016	1.811	2.750	1.380	1.969	1.142		
-	-195	2	0.312	7.677	4.646	0.591	1.079	1.811	2.750	1.380	1.969	1.142		
-	CAT50 -PHC0375S -150	2	0.375	5.906	2.835	0.669	0.969	1.811	2.750	1.380	1.969	1.575		
-	-165	2	0.375	6.496	3.465	0.669	1.035	1.811	2.750	1.380	1.969	1.575		
-	-180	2	0.375	7.087	4.055	0.669	1.094	1.811	2.750	1.380	1.969	1.575		
-	-195	2	0.375	7.677	4.685	0.669	1.161	1.811	2.750	1.380	1.969	1.575		
-	CAT50 -PHC0500S -150	2	0.500	5.906	2.874	0.787	1.091	1.811	2.750	1.380	2.756	1.575		
-	-165	2	0.500	6.496	3.504	0.787	1.157	1.811	2.750	1.380	2.756	1.575		
-	-180	2	0.500	7.087	4.094	0.787	1.220	1.811	2.750	1.380	2.756	1.575		
-	-195	2	0.500	7.677	4.724	0.787	1.283	1.811	2.750	1.380	2.756	1.575		

1. Tool shank diameter tolerance must be within h6.
2. Do not leave the holder with actuating screw tightened when the chuck is empty.
3. Hex-head screws are necessary to plug air hole for center through coolant feed.
4. Item code with - is semi standard item.

Ordering Example

CAT40 - PHC 0250 S - 150
 Shank size I.D. (d) Projection length (L)

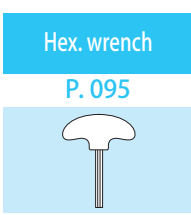
Metric Sizes Unit : Metric

Code	Model	Type	d	L	L1	D1	D2	D3	L0	ℓ	ℓ1	α	Wrench (Option)
1830 00406150	CAT40 -PHC06S -150	1	6	150	71	13	20.5	46	35.05	37	29	3°	L-4T
1830 00406165	-165	1	6	165	87	13	22.2	46	35.05	37	29		
1830 00406180	-180	1	6	180	102	13	23.7	46	35.05	37	29		
1830 00406195	-195	1	6	195	118	13	25.4	46	35.05	37	29		
1830 00407150	CAT40 -PHC07S -150	1	7	150	71	14	21.5	46	35.05	37	29		
1830 00407165	-165	1	7	165	87	14	23.2	46	35.05	37	29		
1830 00407180	-180	1	7	180	102	14	24.7	46	35.05	37	29		
1830 00407195	-195	1	7	195	118	14	26.4	46	35.05	37	29		
1830 00408150	CAT40 -PHC08S -150	1	8	150	72	15	22.6	46	35.05	50	29		
1830 00408165	-165	1	8	165	87	15	24.2	46	35.05	50	29		
1830 00408180	-180	1	8	180	103	15	25.8	46	35.05	50	29		
1830 00408195	-195	1	8	195	118	15	27.4	46	35.05	50	29		
1830 00409150	CAT40 -PHC09S -150	1	9	150	72	16	23.6	46	35.05	50	40		
1830 00409165	-165	1	9	165	87	16	25.2	46	35.05	50	40		
1830 00409180	-180	1	9	180	103	16	26.8	46	35.05	50	40		
1830 00409195	-195	1	9	195	118	16	28.4	46	35.05	50	40		
1830 00410150	CAT40 -PHC10S -150	1	10	150	72	17	24.6	46	35.05	50	40		
1830 00410165	-165	1	10	165	88	17	26.3	46	35.05	50	40		
1830 00410180	-180	1	10	180	103	17	27.8	46	35.05	50	40		
1830 00410195	-195	1	10	195	119	17	29.5	46	35.05	50	40		
1830 00411150	CAT40 -PHC11S -150	1	11	150	73	18	25.7	46	35.05	50	40		
1830 00411165	-165	1	11	165	88	18	27.3	46	35.05	50	40		
1830 00411180	-180	1	11	180	104	18	29.0	46	35.05	50	40		
1830 00411195	-195	1	11	195	119	18	30.5	46	35.05	50	40		
1830 00412150	CAT40 -PHC12S -150	1	12	150	73	19	26.7	46	35.05	70	40		
1830 00412165	-165	1	12	165	88	19	28.3	46	35.05	70	40		
1830 00412180	-180	1	12	180	104	19	30.0	46	35.05	70	40		
1830 00412195	-195	1	12	195	119	19	31.5	46	35.05	70	40		
1830 00416150	CAT40 -PHC16S -150	1	16	150	72	23	30.6	52.5	35.05	75	40		
1830 00416180	-180	1	16	180	103	23	33.8	52.5	35.05	80	40		
1830 00416195	-195	1	16	195	119	23	35.5	52.5	35.05	80	40		
1830 00420150	CAT40 -PHC20S -150	1	20	150	63	28	34.7	62	35.05	70	40		
1830 00420180	-180	1	20	180	93	28	37.8	62	35.05	100	40		
1830 00420195	-195	1	20	195	109	28	39.5	62	35.05	100	40		
1830 00425150	CAT40 -PHC25S -150	1	25	150	65	37	43.9	62	35.05	70	50		
1830 00425180	-180	1	25	180	96	37	47.1	62	35.05	100	50		
1830 00425195	-195	1	25	195	112	37	48.8	62	35.05	110	50		

1. Tool shank diameter tolerance must be within h6.
2. Do not leave the holder with actuating screw tightened when the chuck is empty.
3. Hex-head screws (included) are necessary to plug air hole for center through coolant feed.

Tightening torque (Torque wrench : p.498)

model	I.D. (d)		Tightening torque (Nm)
	mm	inch	
PHC-S	06 ~ 12, 16	0250 ~ 0500	9 ~ 10
PHC-S	20 ~ 25	—	23 ~ 24



Ordering Example

CAT40 - PHC 12 S - 150

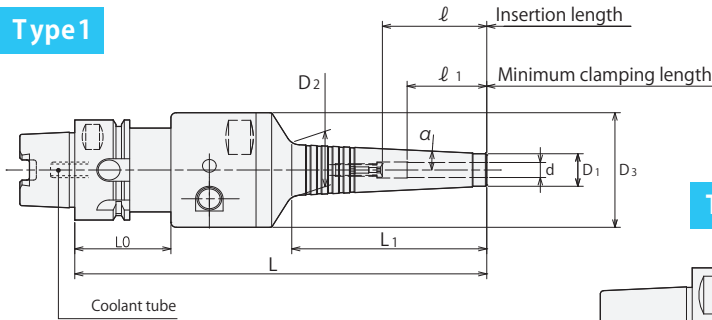
Shank size I.D. (d) Projection length (L)

PHC · S New

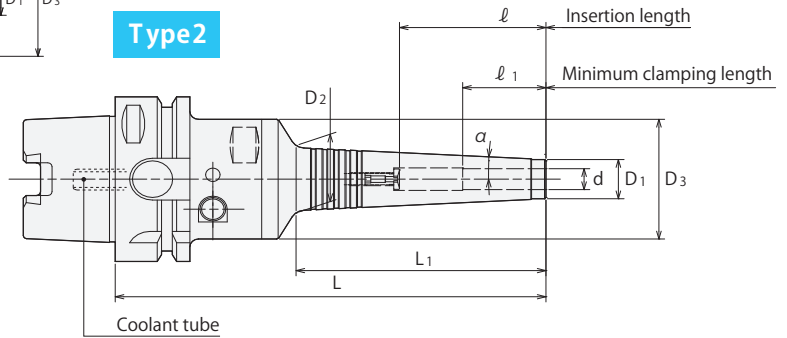
Slim Hydro Chuck

- Perfect choice for tight space applications, such as endmill finishing, drilling and reaming on 5-axis machines.

Type 1



Type 2



- Coolant tube is included.

Inch Sizes

Unit : Inch

Code	Model	Type	d	L	L1	D1	D2	D3	L0	ℓ	ℓ1	α	Wrench (Option)
-	HSK40A -PHC0250S -150	1	0.250	5.906	2.795	0.512	0.807	1.811	1.378	1.457	1.142	3°	L-4T
-	-165	1	0.250	6.496	3.425	0.512	0.874	1.811	1.378	1.457	1.142		
-	-180	1	0.250	7.087	4.016	0.512	0.933	1.811	1.378	1.457	1.142		
-	HSK40A -PHC0312S -150	1	0.312	5.906	2.835	0.591	0.890	1.811	1.378	1.969	1.142		
-	-165	1	0.312	6.496	3.425	0.591	0.953	1.811	1.378	1.969	1.142		
-	-180	1	0.312	7.087	4.055	0.591	1.016	1.811	1.378	1.969	1.142		
-	HSK40A -PHC0375S -150	1	0.375	5.906	2.835	0.669	0.969	1.811	1.378	1.969	1.575		
-	-165	1	0.375	6.496	3.465	0.669	1.035	1.811	1.378	1.969	1.575		
-	-180	1	0.375	7.087	4.055	0.669	1.094	1.811	1.378	1.969	1.575		
-	HSK40A -PHC0500S -150	1	0.500	5.906	2.874	0.787	1.091	1.811	1.378	2.756	1.575		
-	-165	1	0.500	6.496	3.504	0.787	1.157	1.811	1.378	2.756	1.575		
-	-180	1	0.500	7.087	4.094	0.787	1.220	1.811	1.378	2.756	1.575		
-	HSK50A -PHC0250S -150	1	0.250	5.906	2.795	0.512	0.807	1.811	1.654	1.457	1.142	3°	L-4T
-	-165	1	0.250	6.496	3.425	0.512	0.874	1.811	1.654	1.457	1.142		
-	-180	1	0.250	7.087	4.016	0.512	0.933	1.811	1.654	1.457	1.142		
-	HSK50A -PHC0312S -150	1	0.312	5.906	2.835	0.591	0.890	1.811	1.654	1.969	1.142		
-	-165	1	0.312	6.496	3.425	0.591	0.953	1.811	1.654	1.969	1.142		
-	-180	1	0.312	7.087	4.055	0.591	1.016	1.811	1.654	1.969	1.142		
-	HSK50A -PHC0375S -150	1	0.375	5.906	2.835	0.669	0.969	1.811	1.654	1.969	1.575		
-	-165	1	0.375	6.496	3.465	0.669	1.035	1.811	1.654	1.969	1.575		
-	-180	1	0.375	7.087	4.055	0.669	1.094	1.811	1.654	1.969	1.575		
-	HSK50A -PHC0500S -150	1	0.500	5.906	2.874	0.787	1.091	1.811	1.654	2.756	1.575		
-	-165	1	0.500	6.496	3.504	0.787	1.157	1.811	1.654	2.756	1.575		
-	-180	1	0.500	7.087	4.094	0.787	1.220	1.811	1.654	2.756	1.575		
-	HSK63A -PHC0250S -135	2	0.250	5.315	2.795	0.512	0.807	1.811	-	1.457	1.142	3°	L-4T
-	-150	2	0.250	5.906	3.425	0.512	0.874	1.811	-	1.457	1.142		
-	-165	2	0.250	6.496	4.016	0.512	0.933	1.811	-	1.457	1.142		
-	-180	2	0.250	7.087	4.646	0.512	1.000	1.811	-	1.457	1.142		
-	HSK63A -PHC0312S -135	2	0.312	5.315	2.835	0.591	0.890	1.811	-	1.969	1.142		
-	-150	2	0.312	5.906	3.425	0.591	0.953	1.811	-	1.969	1.142		
-	-165	2	0.312	6.496	4.055	0.591	1.016	1.811	-	1.969	1.142		
-	-180	2	0.312	7.087	4.646	0.591	1.079	1.811	-	1.969	1.142		
-	HSK63A -PHC0375S -135	2	0.375	5.315	2.835	0.669	0.969	1.811	-	1.969	1.575		
-	-150	2	0.375	5.906	3.465	0.669	1.035	1.811	-	1.969	1.575		
-	-165	2	0.375	6.496	4.055	0.669	1.094	1.811	-	1.969	1.575		
-	-180	2	0.375	7.087	4.685	0.669	1.161	1.811	-	1.969	1.575		
-	HSK63A -PHC0500S -135	2	0.500	5.315	2.874	0.787	1.091	1.811	-	2.756	1.575		
-	-150	2	0.500	5.906	3.504	0.787	1.157	1.811	-	2.756	1.575		
-	-165	2	0.500	6.496	4.094	0.787	1.220	1.811	-	2.756	1.575		
-	-180	2	0.500	7.087	4.724	0.787	1.283	1.811	-	2.756	1.575		

Inch Sizes

Unit : Inch

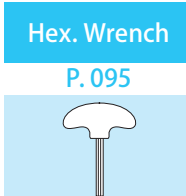
Code	Model	Type	d	L	L1	D1	D2	D3	L0	ℓ	ℓ1	α	Wrench (Option)
-	HSK100A -PHC0250S -150	2	0.250	5.906	2.795	0.512	0.807	1.811	-	1.457	1.142	3°	L-4T
-	-165	2	0.250	6.496	3.425	0.512	0.874	1.811	-	1.457	1.142		
-	-180	2	0.250	7.087	4.016	0.512	0.933	1.811	-	1.457	1.142		
-	-195	2	0.250	7.677	4.646	0.512	1.000	1.811	-	1.457	1.142		
-	HSK100A -PHC0312S -150	2	0.312	5.906	2.835	0.591	0.890	1.811	-	1.969	1.142		
-	-165	2	0.312	6.496	3.425	0.591	0.953	1.811	-	1.969	1.142		
-	-180	2	0.312	7.087	4.055	0.591	1.016	1.811	-	1.969	1.142		
-	-195	2	0.312	7.677	4.646	0.591	1.079	1.811	-	1.969	1.142		
-	HSK100A -PHC0375S -150	2	0.375	5.906	2.835	0.669	0.969	1.811	-	1.969	1.575		
-	-165	2	0.375	6.496	3.465	0.669	1.035	1.811	-	1.969	1.575		
-	-180	2	0.375	7.087	4.055	0.669	1.094	1.811	-	1.969	1.575		
-	-195	2	0.375	7.677	4.685	0.669	1.161	1.811	-	1.969	1.575		
-	HSK100A -PHC0500S -150	2	0.500	5.906	2.874	0.787	1.091	1.811	-	2.756	1.575		
-	-165	2	0.500	6.496	3.504	0.787	1.157	1.811	-	2.756	1.575		
-	-180	2	0.500	7.087	4.094	0.787	1.220	1.811	-	2.756	1.575		
-	-195	2	0.500	7.677	4.724	0.787	1.283	1.811	-	2.756	1.575		

1. Tool shank diameter tolerance must be within h6.
2. Do not leave the holder with actuating screw tightened when the chuck is empty.
3. Item code with - is semi standard item.

Ordering Example

HSK40A - PHC 0250 S - 150
 Shank size I.D. (d) Projection length (L)

Tightening torque (Torque wrench : p.498)		
model	inch	Tightening torque (Nm)
PHC-S	0250 ~ 0500	9 ~ 10

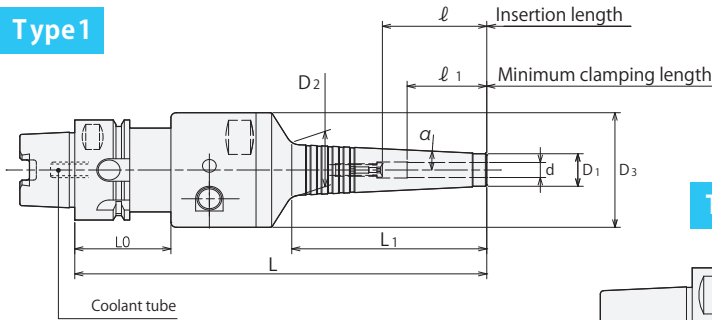


PHC · S New

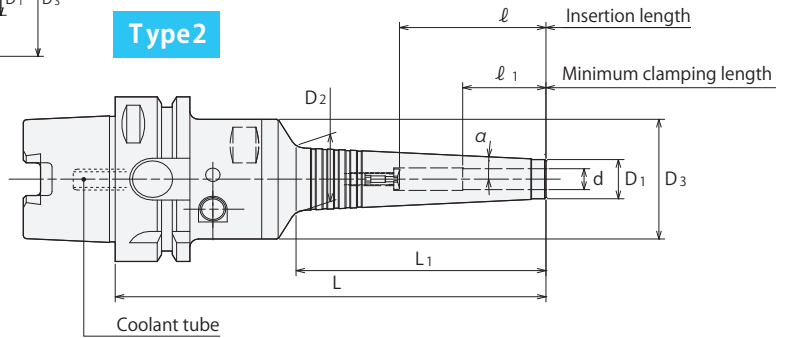
Slim Hydro Chuck

- Perfect choice for tight space applications, such as endmill finishing, drilling and reaming on 5-axis machines.

Type 1



Type 2



- Coolant tube is included.

Metric Sizes

Unit : Metric

Code	Model	Type	d	L	L1	D1	D2	D3	L0	l	l1	α	Kg	Wrench(Option)	
5750 13006150	HSK40A -PHC06S	-150	1	6	150	71	13	20.5	46	35	37	29	3°	0.9	L-4T
5750 13006165		-165	1	6	165	87	13	22.2	46	35	37	29	3°	1.0	
5750 13006180		-180	1	6	180	102	13	23.7	46	35	37	29	3°	1.0	
5750 13007150	HSK40A -PHC07S	-150	1	7	150	71	14	21.5	46	35	37	29	3°	1.0	
5750 13007165		-165	1	7	165	87	14	23.2	46	35	37	29	3°	1.0	
5750 13007180		-180	1	7	180	102	14	24.7	46	35	37	29	3°	1.1	
5750 13008150	HSK40A -PHC08S	-150	1	8	150	72	15	22.6	46	35	50	29	3°	1.0	
5750 13008165		-165	1	8	165	87	15	24.2	46	35	50	29	3°	1.0	
5750 13008180		-180	1	8	180	103	15	25.8	46	35	50	29	3°	1.1	
5750 13009150	HSK40A -PHC09S	-150	1	9	150	72	16	23.6	46	35	50	40	3°	1.0	
5750 13009165		-165	1	9	165	87	16	25.2	46	35	50	40	3°	1.0	
5750 13009180		-180	1	9	180	103	16	26.8	46	35	50	40	3°	1.1	
5750 13010150	HSK40A -PHC10S	-150	1	10	150	72	17	24.6	46	35	50	40	3°	1.0	
5750 13010165		-165	1	10	165	88	17	26.3	46	35	50	40	3°	1.0	
5750 13010180		-180	1	10	180	103	17	27.8	46	35	50	40	3°	1.1	
5750 13011150	HSK40A -PHC11S	-150	1	11	150	73	18	25.7	46	35	50	40	3°	1.0	
5750 13011165		-165	1	11	165	88	18	27.3	46	35	50	40	3°	1.1	
5750 13011180		-180	1	11	180	104	18	29.0	46	35	50	40	3°	1.1	
5750 13012150	HSK40A -PHC12S	-150	1	12	150	73	19	26.7	46	35	70	40	3°	1.0	
5750 13012165		-165	1	12	165	88	19	28.3	46	35	70	40	3°	1.1	
5750 13012180		-180	1	12	180	104	19	30.0	46	35	70	40	3°	1.1	
5750 14006150	HSK50A -PHC06S	-150	1	6	150	71	13	20.5	46	42	37	29	3°	1.1	L-4T
5750 14006165		-165	1	6	165	87	13	22.2	46	42	37	29	3°	1.1	
5750 14006180		-180	1	6	180	102	13	23.7	46	42	37	29	3°	1.2	
5750 14007150	HSK50A -PHC07S	-150	1	7	150	71	14	21.5	46	42	37	29	3°	1.1	
5750 14007165		-165	1	7	165	87	14	23.2	46	42	37	29	3°	1.2	
5750 14007180		-180	1	7	180	102	14	24.7	46	42	37	29	3°	1.2	
5750 14008150	HSK50A -PHC08S	-150	1	8	150	72	15	22.6	46	42	50	29	3°	1.1	
5750 14008165		-165	1	8	165	87	15	24.2	46	42	50	29	3°	1.2	
5750 14008180		-180	1	8	180	103	15	25.8	46	42	50	29	3°	1.2	
5750 14009150	HSK50A -PHC09S	-150	1	9	150	72	16	23.6	46	42	50	40	3°	1.1	
5750 14009165		-165	1	9	165	87	16	25.2	46	42	50	40	3°	1.2	
5750 14009180		-180	1	9	180	103	16	26.8	46	42	50	40	3°	1.3	
5750 14010150	HSK50A -PHC10S	-150	1	10	150	72	17	24.6	46	42	50	40	3°	1.2	
5750 14010165		-165	1	10	165	88	17	26.3	46	42	50	40	3°	1.2	
5750 14010180		-180	1	10	180	103	17	27.8	46	42	50	40	3°	1.3	
5750 14011150	HSK50A -PHC11S	-150	1	11	150	73	18	25.7	46	42	50	40	3°	1.2	
5750 14011165		-165	1	11	165	88	18	27.3	46	42	50	40	3°	1.2	
5750 14011180		-180	1	11	180	104	18	29.0	46	42	50	40	3°	1.3	
5750 14012150	HSK50A -PHC12S	-150	1	12	150	73	19	26.7	46	42	70	40	3°	1.2	
5750 14012165		-165	1	12	165	88	19	28.3	46	42	70	40	3°	1.2	
5750 14012180		-180	1	12	180	104	19	30.0	46	42	70	40	3°	1.3	
5750 15006135	HSK63A -PHC06S	-135	2	6	135	71	13	20.5	46	-	37	29	3°	1.2	L-4T
5750 15006150		-150	2	6	150	87	13	22.2	46	-	37	29	3°	1.3	
5750 15006165		-165	2	6	165	102	13	23.7	46	-	37	29	3°	1.3	
5750 15006180		-180	2	6	180	118	13	25.4	46	-	37	29	3°	1.4	

Metric Sizes

Unit : Metric

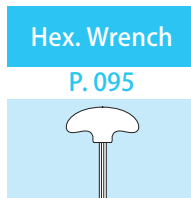
Code	Model	Type	d	L	L1	D1	D2	D3	L0	ℓ	ℓ 1	α	Kg	Wrench(Optional)
5750 15007135	HSK63A -PHC07S -135	2	7	135	71	14	21.5	46	-	37	29	3°	1.2	L-4T
5750 15007150	-150	2	7	150	87	14	23.2	46	-	37	29	3°	1.3	
5750 15007165	-165	2	7	165	102	14	24.7	46	-	37	29	3°	1.3	
5750 15007180	-180	2	7	180	118	14	26.4	46	-	37	29	3°	1.4	
5750 15008135	HSK63A -PHC08S -135	2	8	135	72	15	22.6	46	-	50	29	3°	1.2	
5750 15008150	-150	2	8	150	87	15	24.2	46	-	50	29	3°	1.3	
5750 15008165	-165	2	8	165	103	15	25.8	46	-	50	29	3°	1.3	
5750 15008180	-180	2	8	180	118	15	27.4	46	-	50	29	3°	1.4	
5750 15009135	HSK63A -PHC09S -135	2	9	135	72	16	23.6	46	-	50	40	3°	1.3	
5750 15009150	-150	2	9	150	87	16	25.2	46	-	50	40	3°	1.3	
5750 15009165	-165	2	9	165	103	16	26.8	46	-	50	40	3°	1.4	
5750 15009180	-180	2	9	180	118	16	28.4	46	-	50	40	3°	1.4	
5750 15010135	HSK63A -PHC10S -135	2	10	135	72	17	24.6	46	-	50	40	3°	1.3	
5750 15010150	-150	2	10	150	88	17	26.3	46	-	50	40	3°	1.3	
5750 15010165	-165	2	10	165	103	17	27.8	46	-	50	40	3°	1.4	
5750 15010180	-180	2	10	180	119	17	29.5	46	-	50	40	3°	1.5	
5750 15011135	HSK63A -PHC11S -135	2	11	135	73	18	25.7	46	-	50	40	3°	1.3	
5750 15011150	-150	2	11	150	88	18	27.3	46	-	50	40	3°	1.3	
5750 15011165	-165	2	11	165	104	18	29.0	46	-	50	40	3°	1.3	
5750 15011180	-180	2	11	180	119	18	30.5	46	-	50	40	3°	1.5	
5750 15012135	HSK63A -PHC12S -135	2	12	135	73	19	26.7	46	-	70	40	3°	1.3	
5750 15012150	-150	2	12	150	88	19	28.3	46	-	70	40	3°	1.3	
5750 15012165	-165	2	12	165	104	19	30.0	46	-	70	40	3°	1.4	
5750 15012180	-180	2	12	180	119	19	31.5	46	-	70	40	3°	1.5	
5750 15016135	HSK63A -PHC16S -135	1	16	135	72	23	30.6	52.5	-	75	40	3°		
5750 15016165	-165	1	16	165	103	23	33.8	52.5	-	80	40	3°		
5750 15016180	-180	1	16	180	119	23	35.5	52.5	-	80	40	3°		
5750 15020150	HSK63A -PHC20S -150	2	20	150	63	28	34.7	62	42	70	40	3°		
5750 15020180	-180	2	20	180	93	28	37.8	62	42	100	40	3°		
5750 15020195	-195	2	20	195	109	28	39.5	62	42	100	40	3°		
5750 15025150	HSK63A -PHC25S -150	2	25	150	65	37	43.9	62	42	70	50	3°		
5750 15025180	-180	2	25	180	96	37	47.1	62	42	100	50	3°		
5750 15025195	-195	2	25	195	112	37	48.8	62	42	110	50	3°		
5750 17006150	HSK100A -PHC06S -150	2	6	150	71	13	20.5	46	-	37	29	3°	2.7	
5750 17006165	-165	2	6	165	87	13	22.2	46	-	37	29	3°	2.7	
5750 17006180	-180	2	6	180	102	13	23.7	46	-	37	29	3°	2.8	
5750 17006195	-195	2	6	195	118	13	25.4	46	-	37	29	3°	2.8	
5750 17007150	HSK100A -PHC07S -150	2	7	150	71	14	21.5	46	-	37	29	3°	2.7	
5750 17007165	-165	2	7	165	87	14	23.2	46	-	37	29	3°	2.8	
5750 17007180	-180	2	7	180	102	14	24.7	46	-	37	29	3°	2.8	
5750 17007195	-195	2	7	195	118	14	26.4	46	-	37	29	3°	2.9	
5750 17008150	HSK100A -PHC08S -150	2	8	150	72	15	22.6	46	-	50	29	3°	2.7	
5750 17008165	-165	2	8	165	87	15	24.2	46	-	50	29	3°	2.8	
5750 17008180	-180	2	8	180	103	15	25.8	46	-	50	29	3°	2.8	
5750 17008195	-195	2	8	195	118	15	27.4	46	-	50	29	3°	2.9	
5750 17009150	HSK100A -PHC09S -150	2	9	150	72	16	23.6	46	-	50	40	3°	2.7	
5750 17009165	-165	2	9	165	87	16	25.2	46	-	50	40	3°	2.8	
5750 17009180	-180	2	9	180	103	16	26.8	46	-	50	40	3°	2.8	
5750 17009195	-195	2	9	195	118	16	28.4	46	-	50	40	3°	2.9	
5750 17010150	HSK100A -PHC10S -150	2	10	150	72	17	24.6	46	-	50	40	3°	2.7	
5750 17010165	-165	2	10	165	88	17	26.3	46	-	50	40	3°	2.8	
5750 17010180	-180	2	10	180	103	17	27.8	46	-	50	40	3°	2.9	
5750 17010195	-195	2	10	195	119	17	29.5	46	-	50	40	3°	2.9	
5750 17011150	HSK100A -PHC11S -150	2	11	150	73	18	25.7	46	-	50	40	3°	2.8	
5750 17011165	-165	2	11	165	88	18	27.3	46	-	50	40	3°	2.8	
5750 17011180	-180	2	11	180	104	18	29.0	46	-	50	40	3°	2.9	
5750 17011195	-195	2	11	195	119	18	30.5	46	-	50	40	3°	3.0	
5750 17012150	HSK100A -PHC12S -150	2	12	150	73	19	26.7	46	-	70	40	3°	2.8	
5750 17012165	-165	2	12	165	88	19	28.3	46	-	70	40	3°	2.8	
5750 17012180	-180	2	12	180	104	19	30.0	46	-	70	40	3°	2.9	
5750 17012195	-195	2	12	195	119	19	31.5	46	-	70	40	3°	3.0	
5750 17016150	HSK100A -PHC16S -150	1	16	150	72	23	30.6	52.5	-	75	40	3°		
5750 17016180	-180	1	16	180	103	23	33.8	52.5	-	80	40	3°		
5750 17016195	-195	1	16	195	119	23	35.5	52.5	-	80	40	3°		
5750 17020150	HSK100A -PHC20S -150	1	20	150	63	28	34.7	62	-	70	40	3°		
5750 17020180	-180	1	20	180	93	28	37.8	62	-	100	40	3°		
5750 17020195	-195	1	20	195	109	28	39.5	62	-	100	40	3°		
5750 17025150	HSK100A -PHC25S -150	1	25	150	65	37	43.9	62	-	70	50	3°		
5750 17025180	-180	1	25	180	96	37	47.1	62	-	100	50	3°		
5750 17025195	-195	1	25	195	112	37	48.8	62	-	110	50	3°		

1. Tool shank diameter tolerance must be within h6.
2. Do not leave the holder with actuating screw tightened when the chuck is empty.

Ordering Example

HSK40A - PHC 12 S - 150
 Shank size I.D. (d) Projection length (L)

Tightening torque (Torque wrench : p.498)		
model	I.D. (d) mm	Tightening torque (Nm)
PHC-S	06 ~ 12, 16	9 ~ 10
PHC-S	20 ~ 25	23 ~ 24



Inch to Metric (mm) → Inch × 25.4
 Metric (mm) to Inch → Metric ÷ 25.4 or Metric × 0.03937

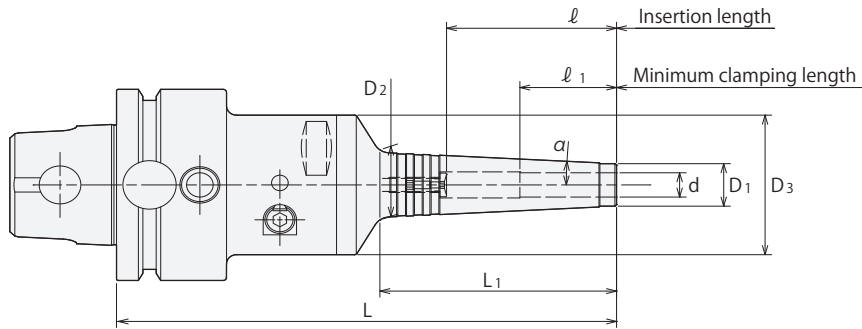


Special / Custom Sizes on request

PHC · S New

Slim Hydro Chuck

- Perfect choice for tight space applications, such as endmill finishing, drilling and reaming on 5-axis machines.



BT
CAT
AHO
HSK-A/E/F/C
HSK-T
UTS
Specialized Machine
Related Equipment
Bush & Chamfering Drill

Milling Chuck

Collet Holder

"R" Zero Holder

Hydraulic Chuck

Shrink Fit

Tapping Chuck

Arbors

Metric Sizes Unit : Metric

Code	Model	d	L	L1	D1	D2	D3	l	l 1	α	Kg	Wrench(Optional)
1490 01106150	UTS5040 -PHC06S -150 -H	6	150	71	13	20.5	46	37	29	3°	1.2	L-4T
1490 01106165	-165 -H	6	165	87	13	22.2	46	37	29	3°	1.2	
1490 01106180	-180 -H	6	180	102	13	23.7	46	37	29	3°	1.3	
1490 01107150	UTS5040 -PHC07S -150 -H	7	150	71	14	21.5	46	37	29	3°	1.2	
1490 01107165	-165 -H	7	165	87	14	23.2	46	37	29	3°	1.2	
1490 01107180	-180 -H	7	180	102	14	24.7	46	37	29	3°	1.3	
1490 01108150	UTS5040 -PHC08S -150 -H	8	150	72	15	22.6	46	50	29	3°	1.2	
1490 01108165	-165 -H	8	165	87	15	24.2	46	50	29	3°	1.2	
1490 01108180	-180 -H	8	180	103	15	25.8	46	50	29	3°	1.3	
1490 01109150	UTS5040 -PHC09S -150 -H	9	150	72	16	23.6	46	50	40	3°	1.2	
1490 01109165	-165 -H	9	165	87	16	25.2	46	50	40	3°	1.3	
1490 01109180	-180 -H	9	180	103	16	26.8	46	50	40	3°	1.3	
1490 01110150	UTS5040 -PHC10S -150 -H	10	150	72	17	24.6	46	50	40	3°	1.2	
1490 01110165	-165 -H	10	165	88	17	26.3	46	50	40	3°	1.3	
1490 01110180	-180 -H	10	180	103	17	27.8	46	50	40	3°	1.3	
1490 01111150	UTS5040 -PHC11S -150 -H	11	150	73	18	25.7	46	50	40	3°	1.2	
1490 01111165	-165 -H	11	165	88	18	27.3	46	50	40	3°	1.3	
1490 01111180	-180 -H	11	180	104	18	29.0	46	50	40	3°	1.4	
1490 01112150	UTS5040 -PHC12S -150 -H	12	150	73	19	26.7	46	70	40	3°	1.2	
1490 01112165	-165 -H	12	165	88	19	28.3	46	70	40	3°	1.3	
1490 01112180	-180 -H	12	180	104	19	30.0	46	70	40	3°	1.4	

When placing an order, please specify high or low pressure.
For high pressure type, please add (-H) on end of the description.

Tightening torque (Torque wrench : p.498)

model	I.D. (d)	Tightening torque (Nm)
	mm	
PHC·S	06 ~ 12, 16	9 ~ 10
PHC·S	20 ~ 25	23 ~ 24

1. Tool shank diameter tolerance must be within h6.
2. Do not leave the holder with actuating screw tightened when the chuck is empty.
3. UTS5040 is available in high pressure only.

Ordering Example

Low pressure type

0 ~ 1.0MPa (UTS10080 : 0 ~ 2.0MPa)

UTS5040 - PHC 12 S - 150

Shank size

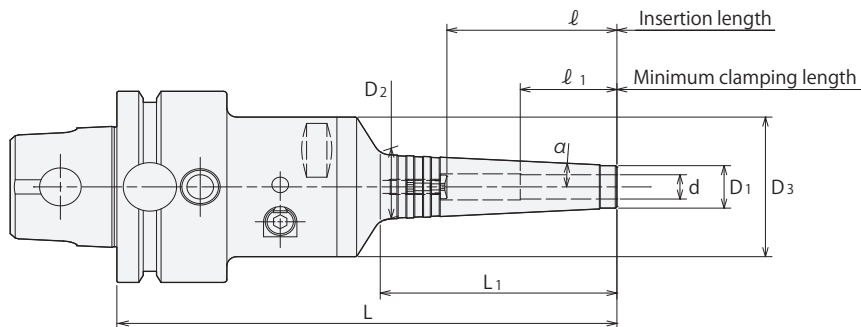
I.D. (d)

Projection length (L)

Hex. wrench

P. 095





Metric Sizes

Unit : Metric

Code	Model	d	L	L1	D1	D2	D3	l	l 1	a	Kg	Wrench(Optional)
1490 0 ※ 206150	UTS6350 -PHC06S -150	6	150	71	13	20.5	46	37	29	3°	1.5	L-4T
1490 0 ※ 206165	-165	6	165	87	13	22.2	46	37	29	3°	1.6	
1490 0 ※ 206180	-180	6	180	102	13	23.7	46	37	29	3°	1.6	
1490 0 ※ 206195	-195	6	195	118	13	25.4	46	37	29	3°	1.7	
1490 0 ※ 207150	UTS6350 -PHC07S -150	7	150	71	14	21.5	46	37	29	3°	1.5	
1490 0 ※ 207165	-165	7	165	87	14	23.2	46	37	29	3°	1.6	
1490 0 ※ 207180	-180	7	180	102	14	24.7	46	37	29	3°	1.6	
1490 0 ※ 207195	-195	7	195	118	14	26.4	46	37	29	3°	1.7	
1490 0 ※ 208150	UTS6350 -PHC08S -150	8	150	72	15	22.6	46	50	29	3°	1.5	
1490 0 ※ 208165	-165	8	165	87	15	24.2	46	50	29	3°	1.6	
1490 0 ※ 208180	-180	8	180	103	15	25.8	46	50	29	3°	1.6	
1490 0 ※ 208195	-195	8	195	118	15	27.4	46	50	29	3°	1.7	
1490 0 ※ 209150	UTS6350 -PHC09S -150	9	150	72	16	23.6	46	50	40	3°	1.5	
1490 0 ※ 209165	-165	9	165	87	16	25.2	46	50	40	3°	1.6	
1490 0 ※ 209180	-180	9	180	103	16	26.8	46	50	40	3°	1.7	
1490 0 ※ 209195	-195	9	195	118	16	28.4	46	50	40	3°	1.7	
1490 0 ※ 210150	UTS6350 -PHC10S -150	10	150	72	17	24.6	46	50	40	3°	1.6	
1490 0 ※ 210165	-165	10	165	88	17	26.3	46	50	40	3°	1.6	
1490 0 ※ 210180	-180	10	180	103	17	27.8	46	50	40	3°	1.7	
1490 0 ※ 210195	-195	10	195	119	17	29.5	46	50	40	3°	1.7	
1490 0 ※ 211150	UTS6350 -PHC11S -150	11	150	73	18	25.7	46	50	40	3°	1.6	
1490 0 ※ 211165	-165	11	165	88	18	27.3	46	50	40	3°	1.6	
1490 0 ※ 211180	-180	11	180	104	18	29.0	46	50	40	3°	1.7	
1490 0 ※ 211195	-195	11	195	119	18	30.5	46	50	40	3°	1.8	
1490 0 ※ 212150	UTS6350 -PHC12S -150	12	150	73	19	26.7	46	70	40	3°	1.6	
1490 0 ※ 212165	-165	12	165	88	19	28.3	46	70	40	3°	1.6	
1490 0 ※ 212180	-180	12	180	104	19	30.0	46	70	40	3°	1.7	
1490 0 ※ 212195	-195	12	195	119	19	31.5	46	70	40	3°	1.8	
1490 0 ※ 216150	UTS6350 -PHC16S -150	16	150	72	23	30.6	52.5	75	40	3°		
1490 0 ※ 216180	-180	16	180	103	23	33.8	52.5	80	40	3°		
1490 0 ※ 216195	-195	16	195	119	23	35.5	52.5	80	40	3°		
1490 0 ※ 220150	UTS6350 -PHC20S -150	20	150	63	28	34.7	62	70	40	3°	L-6T	
1490 0 ※ 220180	-180	20	180	93	28	37.8	62	100	40	3°		
1490 0 ※ 220195	-195	20	195	109	28	39.5	62	100	40	3°		
1490 0 ※ 225150	UTS6350 -PHC25S -150	25	150	65	37	43.9	62	70	50	3°		
1490 0 ※ 225180	-180	25	180	96	37	47.1	62	100	50	3°		
1490 0 ※ 225195	-195	25	195	112	37	48.8	62	110	50	3°		

When placing an order, please specify high or low pressure.
For high pressure type, please add (-H) on end of the description.

1. Tool shank diameter tolerance must be within h6.
2. Do not leave the holder with actuating screw tightened when the chuck is empty.

Tightening torque (Torque wrench : p.498)

model	I.D. (d)	Tightening torque (Nm)
	mm	
PHC-S	06 ~ 12, 16	9 ~ 10
PHC-S	20 ~ 25	23 ~ 24

Ordering Example

Low pressure type

0 ~ 1.0MPa (UTS10080 : 0 ~ 2.0MPa)

UTS6350 - PHC 12 S - 150
Shank size I.D. (d) Projection length (L)

Ordering Example

High pressure type

1.1 ~ 7.0MPa (UTS10080 : 2.1 ~ 7.0MPa)

UTS6350 - PHC 12 S - 150 - H
Shank size I.D. (d) Projection length (L) High pressure type

Hex. wrench

P. 095

