

EDC、FDC-07A、FDC-32B

Collet

- BT
- CAT
- AHO
- HSK-A/E/F/C
- HSK-T
- UTS
- Specialized Machine
- Related Equipment
- Bush & Chamfering Drill
- Sub Holder
- Tapping Chuck
- Tap Adapter
- Adjustable Adapter
- Endmill Chuck
- Straight Drill Chuck
- Floating Holder

| Cutter's shank dia. | Model | | | |
|---------------------|-----------|-----------|-----------|-----------|
| | EDC-19 | EDC-24 | EDC-28 | EDC-36 |
| φ 2.8 ~ 3.0 | EDC-0319 | EDC-0324 | — | — |
| φ 3.0 ~ 3.3 | EDC-03319 | EDC-03324 | — | — |
| φ 3.3 ~ 3.6 | EDC-03619 | EDC-03624 | — | — |
| φ 3.6 ~ 3.9 | EDC-03919 | EDC-03924 | — | — |
| φ 3.9 ~ 4.2 | EDC-04219 | EDC-04224 | EDC-04228 | EDC-04236 |
| φ 4.2 ~ 4.5 | EDC-04519 | EDC-04524 | EDC-04528 | EDC-04536 |
| φ 4.5 ~ 5.0 | EDC-0519 | EDC-0524 | EDC-0528 | EDC-0536 |
| φ 5.0 ~ 5.5 | EDC-05519 | EDC-05524 | EDC-05528 | EDC-05536 |
| φ 5.5 ~ 6.0 | EDC-0619 | EDC-0624 | EDC-0628 | EDC-0636 |
| φ 6.0 ~ 6.5 | EDC-06519 | EDC-06524 | EDC-06528 | EDC-06536 |
| φ 6.5 ~ 7.0 | EDC-0719 | EDC-0724 | EDC-0728 | EDC-0736 |
| φ 7.0 ~ 7.5 | EDC-07519 | EDC-07524 | EDC-07528 | EDC-07536 |
| φ 7.5 ~ 8.0 | EDC-0819 | EDC-0824 | EDC-0828 | EDC-0836 |
| φ 8.0 ~ 8.5 | EDC-08519 | EDC-08524 | EDC-08528 | EDC-08536 |
| φ 8.5 ~ 9.0 | EDC-0919 | EDC-0924 | EDC-0928 | EDC-0936 |
| φ 9.0 ~ 9.5 | — | EDC-09524 | EDC-09528 | EDC-09536 |
| φ 9.5 ~ 10.0 | — | EDC-1024 | EDC-1028 | EDC-1036 |
| φ 10.0 ~ 10.5 | — | EDC-10524 | EDC-10528 | EDC-10536 |
| φ 10.5 ~ 11.0 | — | EDC-1124 | EDC-1128 | EDC-1136 |
| φ 11.0 ~ 11.5 | — | EDC-11524 | EDC-11528 | EDC-11536 |
| φ 11.5 ~ 12.0 | — | EDC-1224 | EDC-1228 | EDC-1236 |
| φ 12.0 ~ 12.5 | — | — | EDC-12528 | EDC-12536 |
| φ 12.5 ~ 13.0 | — | — | EDC-1328 | EDC-1336 |
| φ 13.0 ~ 13.5 | — | — | EDC-13528 | EDC-13536 |
| φ 13.5 ~ 14.0 | — | — | EDC-1428 | EDC-1436 |
| φ 14.0 ~ 14.5 | — | — | EDC-14528 | EDC-14536 |
| φ 14.5 ~ 15.0 | — | — | EDC-1528 | EDC-1536 |
| φ 15.0 ~ 15.5 | — | — | EDC-15528 | EDC-15536 |
| φ 15.5 ~ 16.0 | — | — | EDC-1628 | EDC-1636 |
| φ 16.0 ~ 16.5 | — | — | — | EDC-16536 |
| φ 16.5 ~ 17.0 | — | — | — | EDC-1736 |
| φ 17.0 ~ 17.5 | — | — | — | EDC-17536 |
| φ 17.5 ~ 18.0 | — | — | — | EDC-1836 |
| φ 18.0 ~ 18.5 | — | — | — | EDC-18536 |
| φ 18.5 ~ 19.0 | — | — | — | EDC-1936 |
| φ 19.0 ~ 19.5 | — | — | — | EDC-19536 |
| φ 19.5 ~ 20.0 | — | — | — | EDC-2036 |
| φ 20.0 ~ 20.5 | — | — | — | EDC-20536 |
| φ 20.5 ~ 21.0 | — | — | — | EDC-2136 |
| φ 21.0 ~ 21.5 | — | — | — | EDC-21536 |
| φ 21.5 ~ 22.0 | — | — | — | EDC-2236 |

| Cutter's shank dia. | Model |
|---------------------|------------|
| | FDC-07A |
| φ 0.5 ~ 1.0 | FDC-01007A |
| φ 1.0 ~ 1.5 | FDC-01507A |
| φ 1.5 ~ 2.0 | FDC-02007A |
| φ 2.0 ~ 2.5 | FDC-02507A |
| φ 2.5 ~ 3.0 | FDC-03007A |
| φ 3.0 ~ 3.5 | FDC-03507A |
| φ 3.5 ~ 4.0 | FDC-04007A |
| φ 4.0 ~ 4.5 | FDC-04507A |
| φ 4.5 ~ 5.0 | FDC-05007A |
| φ 5.0 ~ 5.5 | FDC-05507A |
| φ 5.5 ~ 6.0 | FDC-06007A |
| φ 6.0 ~ 6.5 | FDC-06507A |
| φ 6.5 ~ 7.0 | FDC-07007A |

| Cutter's shank dia. | Model |
|---------------------|------------|
| | FDC-32B |
| φ 20.0 ~ 20.5 | FDC-20532B |
| φ 20.5 ~ 21.0 | FDC-21032B |
| φ 21.0 ~ 21.5 | FDC-21532B |
| φ 21.5 ~ 22.0 | FDC-22032B |
| φ 22.0 ~ 22.5 | FDC-22532B |
| φ 22.5 ~ 23.0 | FDC-23032B |
| φ 23.0 ~ 23.5 | FDC-23532B |
| φ 23.5 ~ 24.0 | FDC-24032B |
| φ 24.0 ~ 24.5 | FDC-24532B |
| φ 24.5 ~ 25.0 | FDC-25032B |
| φ 25.0 ~ 25.5 | FDC-25532B |
| φ 25.5 ~ 26.0 | FDC-26032B |
| φ 26.0 ~ 26.5 | FDC-26532B |
| φ 26.5 ~ 27.0 | FDC-27032B |
| φ 27.0 ~ 27.5 | FDC-27532B |
| φ 27.5 ~ 28.0 | FDC-28032B |
| φ 28.0 ~ 28.5 | FDC-28532B |
| φ 28.5 ~ 29.0 | FDC-29032B |
| φ 29.0 ~ 29.5 | FDC-29532B |
| φ 29.5 ~ 30.0 | FDC-30032B |
| φ 30.0 ~ 30.5 | FDC-30532B |
| φ 30.5 ~ 31.0 | FDC-31032B |
| φ 31.0 ~ 31.5 | FDC-31532B |
| φ 31.5 ~ 32.0 | FDC-32032B |

EDC

Ordering Example

EDC - 065 19
 MAX. chucking dia. 19 Series

FDC-07A

Ordering Example

FDC - 060 07 A
 MAX. chucking dia. | Accuracy
 07 Series

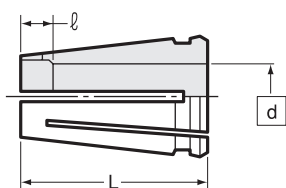
FDC-32B

Ordering Example

FDC - 310 32 B
 MAX. chucking dia. | Accuracy
 32 Series



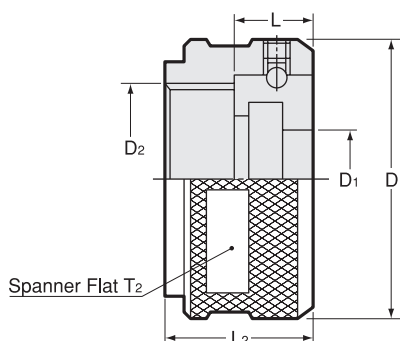
EDC Collet Dimension



| Collet | EDC- \square 19 | | | | EDC- \square 24 | | | | EDC- \square 28 | | | | | | EDC- \square 36 | | | | | | | | | | | |
|-------------|-------------------|-----|-----------|-----|-------------------|---|-----------|-----|-------------------|------|-----------|-----|-----------|------|-------------------|-----|-----------|---|-----------|-----|------|------|------|-----|------|---|
| Nut | KDP-1916 | | | | KDP-2422 | | | | KDP-2825 | | | | | | KDP-3632 | | | | | | | | | | | |
| L | 25 | | 20 | | 25 | | 30 | | 25 | | 40 | | 30 | | 25 | | 45 | | 40 | | | | | | | |
| \square l | \square | l | \square | l | \square | l | \square | l | \square | l | \square | l | \square | l | \square | l | \square | l | \square | l | | | | | | |
| | 3.0 | 7.0 | 5.0 | 4.5 | 8.5 | 0 | 3.0 | 7.0 | 4.5 | 11.5 | 4.2 | 7.0 | 4.5 | 18.5 | 12.5 | 4.5 | 14.5 | 0 | 4.2 | 4.0 | 4.5 | 23.5 | 12.5 | 7.0 | 20.5 | 0 |
| | 3.3 | 7.0 | 5.5 | 4.0 | 9.0 | 0 | 3.3 | 7.0 | 5.0 | 9.5 | | | 5.0 | 16.5 | 13.0 | 4.0 | 15.0 | 0 | | | 5.0 | 21.5 | 13.0 | 6.5 | 21.0 | 0 |
| | 3.6 | 7.0 | 6.0 | 4.0 | | | 3.6 | 7.0 | 5.5 | 9.0 | | | 5.5 | 16.0 | 13.5 | 0 | 15.5 | 0 | | | 5.5 | 21.0 | 13.5 | 6.0 | 21.5 | 0 |
| | 3.9 | 7.0 | 6.5 | 4.0 | | | 3.9 | 7.0 | 6.0 | 8.5 | | | 6.0 | 13.0 | 14.0 | 0 | 16.0 | 0 | | | 6.0 | 17.0 | 14.0 | 6.0 | 22.0 | 0 |
| | 4.2 | 7.0 | 7.0 | 4.0 | | | 4.2 | 7.0 | 6.5 | 8.0 | | | 6.5 | 13.0 | | | | | | | 6.5 | 17.0 | 14.5 | 5.5 | | |
| | 4.5 | 6.5 | 7.5 | 4.0 | | | | | 7.0 | 5.0 | | | 7.0 | 13.0 | | | | | | | 7.0 | 15.0 | 15.0 | 5.0 | | |
| | | | 8.0 | 0 | | | | | 7.5 | 5.0 | | | 7.5 | 13.0 | | | | | | | 7.5 | 15.0 | 15.5 | 5.0 | | |
| | | | | | | | | | 8.0 | 5.0 | | | 8.0 | 11.5 | | | | | | | 8.0 | 15.0 | 16.0 | 5.0 | | |
| | | | | | | | | | 8.5 | 5.0 | | | 8.5 | 10.5 | | | | | | | 8.5 | 15.0 | 16.5 | 5.0 | | |
| | | | | | | | | | 9.0 | 5.0 | | | 9.0 | 10.5 | | | | | | | 9.0 | 15.0 | 17.0 | 5.0 | | |
| | | | | | | | | | 9.5 | 4.5 | | | 9.5 | 10.0 | | | | | | | 9.5 | 14.5 | 17.5 | 5.0 | | |
| | | | | | | | | | 10.0 | 4.5 | | | 10.0 | 10.0 | | | | | | | 10.0 | 11.5 | 18.0 | 4.0 | | |
| | | | | | | | | | 10.5 | 4.0 | | | 10.5 | 5.0 | | | | | | | 10.5 | 11.0 | 18.5 | 4.0 | | |
| | | | | | | | | | 11.0 | 4.0 | | | 11.0 | 5.0 | | | | | | | 11.0 | 10.5 | 19.0 | 4.0 | | |
| | | | | | | | | | 11.5 | 4.0 | | | 11.5 | 5.0 | | | | | | | 11.5 | 10.0 | 19.5 | 4.0 | | |
| | | | | | | | | | 12.0 | 0 | | | 12.0 | 4.5 | | | | | | | 12.0 | 10.0 | 20.0 | 0 | | |

Shrinkage Allowance : 0.3mm for d 4.5 or smaller
0.5mm for d 5.0 or bigger

KDP Nut Dimension



| Code | Model | Collet | D | D1 | D2 | L | L2 | T2 |
|---------------|------------------|-------------------|----|------|---------|------|------|----|
| 0070 00001916 | KDP -1916 | EDC- \square 19 | 26 | 10 | M19 P=1 | 6.7 | 14 | 24 |
| 0070 00002422 | KDP -2422 | EDC- \square 24 | 32 | 12.5 | M24 P=1 | 7.2 | 15 | 30 |
| 0070 00002825 | KDP -2825 | EDC- \square 28 | 36 | 16.5 | M28 P=1 | 7.5 | 15 | 33 |
| 0070 00003632 | KDP -3632 | EDC- \square 36 | 46 | 23 | M36 P=1 | 10.0 | 18.5 | 42 |

Combination of accessories

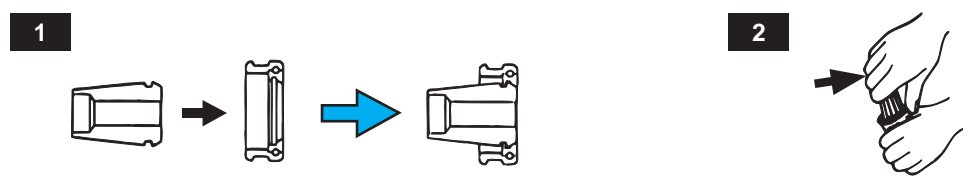
| Collet | | Nut | | Spanner | |
|-----------------|----------------|---------------|-----------------|---------------|-----------------------|
| Code | Model | Code | Model | Code | Model |
| 2480 0120 ※※ 07 | FDC-07A | 0070 01001407 | KDP-1414 | — | Flat17mm width |
| 0070 000190 ※※ | EDC-19 | 0070 00001916 | KDP-1916 | 0803 00000011 | S-1L |
| 0070 00024 ※※※ | EDC-24 | 0070 00002422 | KDP-2422 | 0803 00000013 | S-3L |
| 0070 00028 ※※※ | EDC-28 | 0070 00002825 | KDP-2825 | 0803 00000014 | S-4L |
| 0070 00036 ※※※ | EDC-36 | 0070 00003632 | KDP-3632 | 0803 00000015 | S-5L |
| 2480 003 ※※※ 32 | FDC-32B | 2544 00000032 | HDP-32 | 0803 00000006 | S-6 |

Spanner



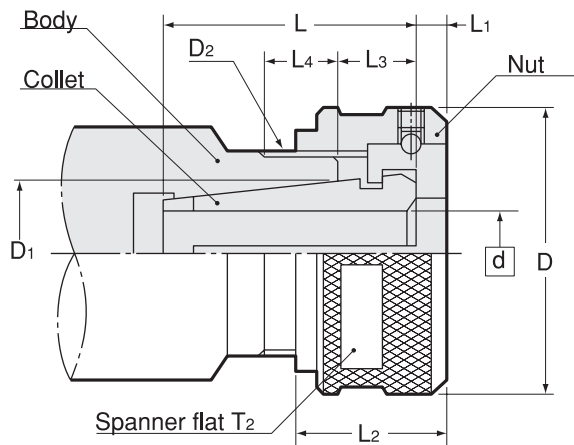
Use of NT spanners on NT products prevent over-tightening and breakage. As NT spanner flats are made to NT specifications, conventional spanner may not fit properly on NT products.

Collet insertion and removal



1. To insert
Place EDC collet into threaded end of KDP nut. Press down on rear of the collet to "clip" the collet into the nut.
2. To remove
While holding KDP nut firmly in one hand grasp EDC collet in the other while pushing sideways.

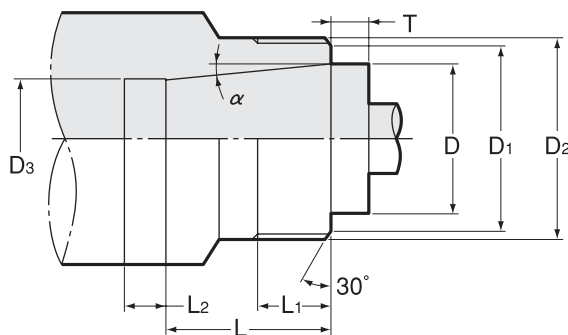
Dimension for Collet and Nut



| Collet | Nut | Spanner | d | D | D1 | D2 | L | L1 | L2 | L3 | L4 MIN | T2 |
|----------|----------|---------|----------|----|-------|------------|------|-----|------|-----------|-----------|----|
| EDC -d19 | KDP-1916 | S-1L | 2.8 ~ 9 | 26 | 13.73 | M19 P=1 | (25) | 2.5 | 14 | 3.5 ~ 7.0 | 8 | 24 |
| EDC -d24 | KDP-2422 | S-3L | 2.8 ~ 12 | 32 | 18.59 | M24 P=1 | (30) | 3.0 | 15 | 3.5 ~ 7.0 | 8 | 30 |
| EDC -d28 | KDP-2825 | S-4L | 3.9 ~ 16 | 36 | 22.3 | M28 P=1 | (40) | 3.0 | 15 | 4.0 ~ 7.5 | 8 | 33 |
| EDC -d36 | KDP-3632 | S-5L | 3.9 ~ 22 | 46 | 30.6 | M36 P=1 | (45) | 4.3 | 18.5 | 5.5 ~ 9.0 | 10 | 42 |

L dimension varies from size to size.

Dimension for body



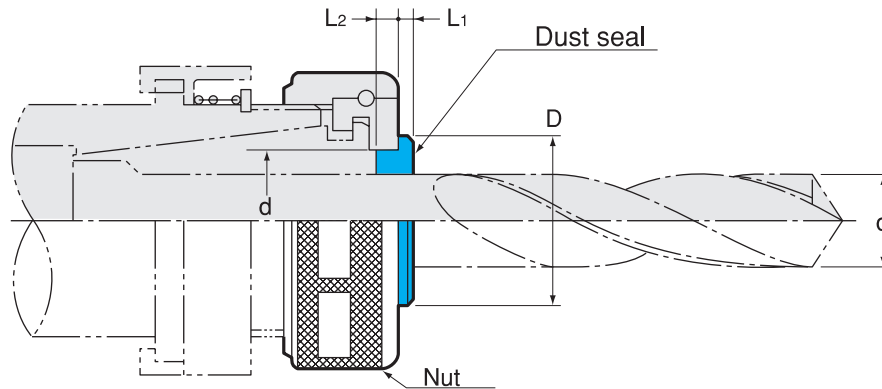
| Collet | Nut | D | T ± 0.1 | D1 | D2 | D3 | L | L1 MIN | (L2) | α |
|----------|----------|-------|------------|----|------------|--------|------|-----------|-------|--------|
| EDC -d19 | KDP-1916 | 13.73 | 4.24 | 18 | M19 P=1 | (10.8) | 21 | 8 | (6.0) | 5° 59' |
| EDC -d24 | KDP-2422 | 18.59 | 4.19 | 23 | M24 P=1 | (14.8) | 26 | 8 | (6.6) | 5° 59' |
| EDC -d28 | KDP-2825 | 22.3 | 4.52 | 27 | M28 P=1 | (18.5) | 35.5 | 8 | (10) | 5° 59' |
| EDC -d36 | KDP-3632 | 30.6 | 5 | 35 | M36 P=1 | (24.8) | 39 | 10 | (10) | 5° 59' |

D3 and L2 are for reference only and can be changed to your designing.
Contact us for taper gauge.

DS

Dust Seal

- By installing a dust seal into nut, chips are prevented from entering. To insert dust seal, apply some adhesive to nut and press down on the dust seal to snap it into place.



 Applicable only for KDP series and HDP32 nut.

| Code | Collet | Nut | Collet | d | D | d | L1 | L2 |
|----------------|---------------|----------|---------|------------|----|------|-----|-----|
| 0071 00009 ※※※ | DS9-d | KDP-1916 | EDC-19 | 2.8 ~ 9 | 15 | 10 | 1.5 | 2.3 |
| 0071 00012 ※※※ | DS12-d | KDP-2422 | EDC-24 | 2.8 ~ 11.5 | 18 | 12.5 | 1.5 | 2.7 |
| 0071 00016 ※※※ | DS16-d | KDP-2825 | EDC-28 | 4.0 ~ 15.5 | 22 | 16.5 | 2 | 2.7 |
| 0071 00022 ※※※ | DS22-d | KDP-3632 | EDC-36 | 4.0 ~ 22 | 30 | 23 | 2 | 4 |
| 0071 00032 ※※※ | DS32-d | HDP-32 | FDC-32B | 20.0 ~ 32 | 40 | 33 | 2 | 4 |

- 1.Shank diameter of a cutting tool will be inserted in " ※※※ ". Product code for DS16-12.0 will be 0071 00016120 .
- 2.When ordering, please specify tool shank diameter.

Ordering Example

DS 16 - 12.0

dust seal | Tool shank dia. in use
Max. collet size