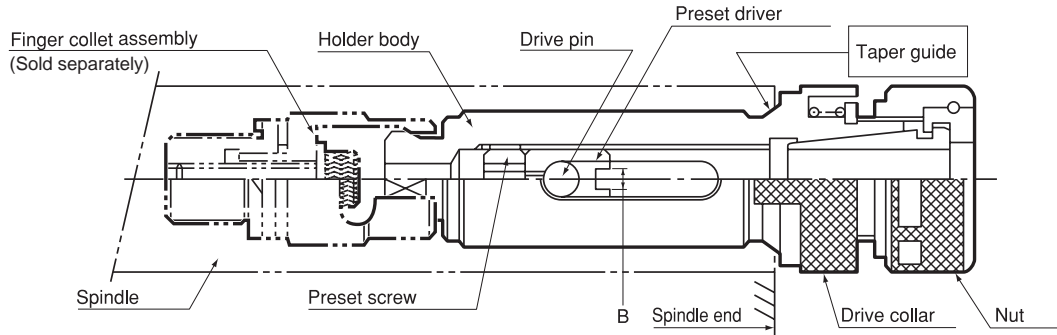


KD-T

Quick Change Stub Holder

- Back-lash in radial direction is little since taper guide portion on the end face of spindle bore and taper portion of holder body securely attached.
- Except the taper guide feature, all other features and condition of use are the same as KD.



KD-T Collet set



| Code | Model | B | Chucking range d | Preset driver | Collet | Nut | Spanner | Finger collet assembly |
|----------------|-------------------------------------|-------------|---------------------|---------------|----------|----------|-----------------|------------------------|
| 0850 1420 □※※※ | KD-14R2T /□□ 07F / ※※ | 0 | 0.5 ~ 7.0 | KDS -007F | FDC-d07A | KDP-1414 | Flat 17mm width | KDA-14 |
| | | 2.4 | 3.1 ~ 5.0 | KDS -2.407F | | | | |
| | | 3 | 5.1 ~ 6.0 | KDS -307F | | | | |
| | | 4 | 6.1 ~ 7.0 | KDS -407F | | | | |
| 0850 1600 □※※※ | KD-16T /□□ 09F / ※※ | 0 | 2.8 ~ 9.0 | KDS -009F | EDC-d19 | KDP-1916 | S-1L | KDA-16 |
| | | 2.4 | 3.1 ~ 5.0 | KDS -2.409F | | | | |
| 0850 1900 □※※※ | KD-19T /□□ 09F / ※※ | 3 | 5.1 ~ 6.0 | KDS -309F | EDC-d19 | KDP-1916 | S-1L | KDA-19 |
| | | 4 | 6.1 ~ 9.0 | KDS -409F | | | | |
| 0850 2000 □※※※ | KD-20T /□□ 09F / ※※ | 4 | 6.1 ~ 9.0 | KDS -409F | EDC-d19 | KDP-1916 | S-1L | KDA-20 |
| 0850 2200 □※※※ | KD-22T /□□ 12F / ※※ | 0 | 2.8 ~ 12.0 | KDS -012F | EDC-d24 | KDP-2422 | S-3L | KDA-22 |
| | | 2.4 | 3.1 ~ 5.0 | KDS -2.412F | | | | |
| | | 3 | 5.1 ~ 6.0 | KDS -312F | | | | |
| 0850 2400 □※※※ | KD-24T /□□ 12F / ※※ | 4 | 6.1 ~ 9.0 | KDS -412F | EDC-d24 | KDP-2422 | S-3L | KDA-24 |
| | | 5 | 9.1 ~ 12.0 | KDS -512F | | | | |
| 0850 2500 □※※※ | KD-25T /□□ 16F / ※※ | 0 | 4.0 ~ 16.0 | KDS -016F | EDC-d28 | KDP-2825 | S-4L | KDA-25 |
| 2.4 | 4.0 ~ 5.0 | KDS -2.416F | | | | | | |
| 0850 2600 □※※※ | KD-26T /□□ 16F / ※※ | 3 | 5.1 ~ 6.0 | KDS -316F | EDC-d28 | KDP-2825 | S-4L | KDA-26 |
| 4 | 6.1 ~ 9.0 | KDS -416F | | | | | | |
| 0850 2800 □※※※ | KD-28T /□□ 16F / ※※ | 5 | 9.1 ~ 12.0 | KDS -516F | EDC-d28 | KDP-2825 | S-4L | KDA-28 |
| 0850 3000 □※※※ | KD-30T /□□ 16F / ※※ | 6 | 12.1 ~ 16.0 | KDS -616F | | | | |
| 0850 3200 □※※※ | KD-32T /□□ 22F / ※※ | 0 | 4.0 ~ 22.0 | KDS -022F | EDC-d36 | KDP-3632 | S-5L | KDA-32 |
| | | 2.4 | 4.0 ~ 5.0 | KDS -2.422F | | | | |
| | | 3 | 5.1 ~ 6.0 | KDS -322F | | | | |
| 0850 3500 □※※※ | KD-35T /□□ 22F / ※※ | 4 | 6.1 ~ 9.0 | KDS -422F | EDC-d36 | KDP-3632 | S-5L | KDA-35 |
| | | 5 | 9.1 ~ 12.0 | KDS -522F | | | | |
| | | 6 | 12.1 ~ 16.0 | KDS -622F | | | | |
| 0850 3600 □※※※ | KD-36T /□□ 22F / ※※ | 8 | 16.1 ~ 22.0 | KDS -822F | EDC-d36 | KDP-3632 | S-5L | KDA-36 |
| | | 0 | 20.1 ~ 32.0 | KDS -032F | | | | |
| 0850 4810 □※※※ | KD-48RT /□□ 32F / ※※ | 8 | 20.1 ~ 22.0 | KDS -832F | FDC-d32B | HDP-32 | S-6 | KDA-48 |
| | | 12 | 22.1 ~ 32.0 | KDS -1232F | | | | |

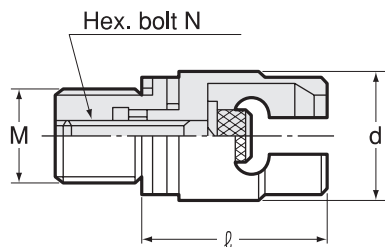
1. Please select preset driver according to tang size of cutting tool. (Refer to P.438)
2. Spanner and finger collet assembly is sold separately
3. Refer to P.441 for spindle dimension.

| | | |
|-------------------|-------------------------|----------------------------------|
| Spanner P. 446 | Preset driver P. 438 | Finger collet assembly P. 438 |
| | | |

Ordering Example

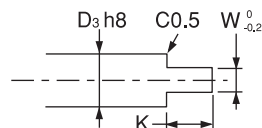
KD-19T / 3 09F / 6.0
Tang width | Collet I.D.
Max. cutter dia.

Finger collet assembly (Spindle parts)



| Model | Holder | d | l | M (P=1) | N |
|---------|---------|----|------|---------|-----|
| KDA -14 | KD-14R2 | 14 | 27.3 | M10 | M5 |
| KDA -16 | KD-16 | 16 | 24.3 | M12 | M5 |
| KDA -19 | KD-19 | 19 | 29.3 | M12 | M5 |
| KDA -20 | KD-20 | 20 | 29.3 | M12 | M5 |
| KDA -22 | KD-22 | 22 | 27 | M16 | M6 |
| KDA -24 | KD-24 | 24 | 27 | M16 | M6 |
| KDA -25 | KD-25 | 25 | 29.5 | M18 | M8 |
| KDA -26 | KD-26 | 26 | 29.5 | M18 | M8 |
| KDA -28 | KD-28 | 28 | 29.5 | M18 | M8 |
| KDA -30 | KD-30 | 30 | 29.5 | M18 | M8 |
| KDA -32 | KD-32 | 32 | 30.5 | M22 | M8 |
| KDA -35 | KD-35 | 35 | 30.5 | M22 | M8 |
| KDA -36 | KD-36 | 36 | 30.5 | M22 | M8 |
| KDA -48 | KD-48 | 48 | 35.5 | M22 | M10 |

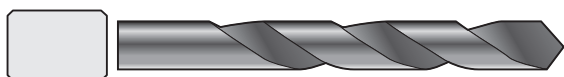
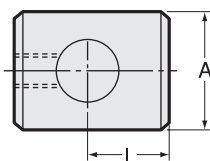
Tang



| D3 | | W | K |
|-----------|-------|-----|----|
| Exceeding | Below | | |
| 3.1 | 5 | 2.4 | 5 |
| 5.1 | 6 | 3 | 6 |
| 6.1 | 9 | 4 | 8 |
| 9.1 | 12 | 5 | 8 |
| 12.1 | 16 | 6 | 10 |
| 16.1 | 22 | 8 | 12 |
| 22.1 | 32 | 12 | 12 |

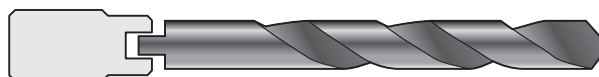
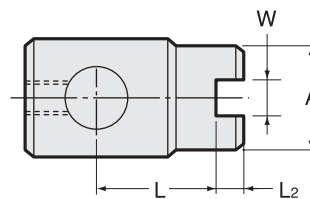
Preset driver (For KD, KD-T)

Type1 without tang



(Drill without tang)

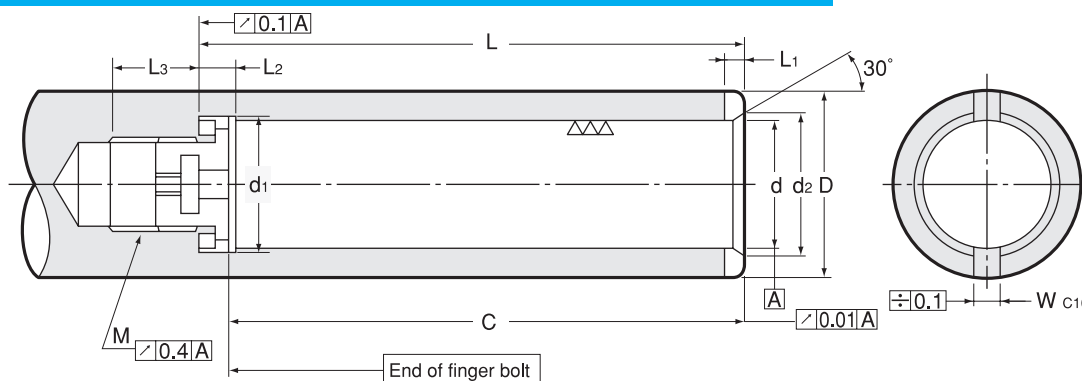
Type2 with tang



(Drill with tang)

| Code | Model | Holder body | Type | W ^{+0.4} / _{+0.3} | A | L | L2 |
|---------------|-----------|-----------------|------|-------------------------------------|------|------|----|
| 0802 02000071 | KDS -007F | KDB-14R2 | 1 | — | 7 | 5 | — |
| 0802 02024071 | -2.407F | | 2 | 2.4 | 7 | 5 | 4 |
| 0802 02003071 | -307F | | 2 | 3 | 7 | 5 | 4 |
| 0802 02004071 | -407F | | 2 | 4 | 7 | 5 | 4 |
| 0802 02000091 | KDS -009F | KDB-16,19,20 | 1 | — | 9 | 7.5 | — |
| 0802 02024091 | -2.409F | | 2 | 2.4 | 7 | 7.5 | 3 |
| 0802 02003091 | -309F | | 2 | 3 | 9 | 5.5 | 3 |
| 0802 02004091 | -409F | | 2 | 4 | 9 | 5.5 | 3 |
| 0802 02000121 | KDS -012F | KDB-22,24 | 1 | — | 10 | 12.5 | — |
| 0802 02024121 | -2.412F | | 2 | 2.4 | 10.8 | 12.5 | 4 |
| 0802 02003121 | -312F | | 2 | 3 | 10.8 | 12.5 | 4 |
| 0802 02004121 | -412F | | 2 | 4 | 10.8 | 9.5 | 4 |
| 0802 02005121 | -512F | | 2 | 5 | 10.8 | 9.5 | 4 |
| 0802 02000161 | KDS -016F | KDB-25,26,28,30 | 1 | — | 7 | 21 | — |
| 0802 02024161 | -2.416F | | 2 | 2.4 | 12.5 | 21 | 3 |
| 0802 02003161 | -316F | | 2 | 3 | 12.5 | 21 | 3 |
| 0802 02004161 | -416F | | 2 | 4 | 12.5 | 19 | 3 |
| 0802 02005161 | -516F | | 2 | 5 | 12.5 | 12 | 4 |
| 0802 02006161 | -616F | | 2 | 6 | 16 | 7 | 5 |
| 0802 02000221 | KDS -022F | KDB-32,35,36 | 1 | — | 19 | 14 | — |
| 0802 02024221 | -2.422F | | 2 | 2.4 | 19 | 14 | 3 |
| 0802 02003221 | -322F | | 2 | 3 | 19 | 14 | 3 |
| 0802 02004221 | -422F | | 2 | 4 | 19 | 14 | 3 |
| 0802 02005221 | -522F | | 2 | 5 | 19 | 11 | 3 |
| 0802 02006221 | -622F | | 2 | 6 | 19 | 7 | 3 |
| 0802 02008221 | -822F | | 2 | 8 | 19 | 7 | 3 |
| 0802 02000321 | KDS -032F | KDB-48 | 1 | — | 29 | 12 | — |
| 0802 02008321 | -832F | | 2 | 8 | 29 | 12 | 8 |
| 0802 02012321 | -1232F | | 2 | 12 | 29 | 12 | 8 |

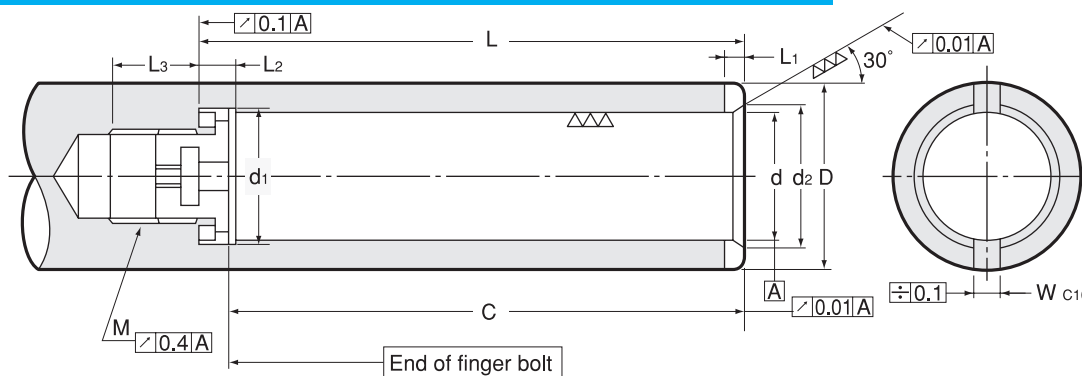
Dimension for KD spindle



1. C dimension shows length from end of finger bolt to end of spindle. (refer to P. 443)
2. Don't carburize thread (M) portion.

| Size | d _{G6} | d ₂ | D _{Min} | d ₁ | L ± 0.1 | L ₁ +0.2 / +0.1 | L ₂ | L ₃ | W _{C10} | M _{P=1} |
|------|-----------------|----------------|------------------|----------------|---------|----------------------------|----------------|----------------|------------------|------------------|
| 14 | 14 | 15.5 | 20 | 14.4 | 68 | 3 | 5 | 15 | 8 | 10 |
| 16 | 16 | 17.5 | 25 | 16.4 | 72.5 | 3 | 5 | 15 | 8 | 12 |
| 19 | 19 | 20.5 | 28 | 19.4 | 82.5 | 3 | 5 | 15 | 9 | 12 |
| 20 | 20 | 21.5 | 28 | 20.4 | 82.5 | 3 | 5 | 15 | 9 | 12 |
| 22 | 22 | 23.5 | 32 | 22.4 | 89.5 | 3 | 5 | 15 | 10 | 16 |
| 24 | 24 | 25.5 | 32 | 24.4 | 89.5 | 3 | 5 | 15 | 10 | 16 |
| 25 | 25 | 26.5 | 35 | 25.4 | 105 | 3 | 8 | 20 | 10 | 18 |
| 26 | 26 | 27.5 | 35 | 26.4 | 105 | 3 | 8 | 20 | 10 | 18 |
| 28 | 28 | 29.5 | 38 | 28.4 | 105 | 3 | 8 | 20 | 10 | 18 |
| 30 | 30 | 31.5 | 40 | 30.4 | 105 | 3 | 8 | 20 | 10 | 18 |
| 32 | 32 | 33.5 | 42 | 32.4 | 123 | 3 | 8 | 20 | 10 | 22 |
| 35 | 35 | 36.5 | 45 | 35.4 | 123 | 3 | 8 | 20 | 10 | 22 |
| 36 | 36 | 37.5 | 45 | 36.4 | 123 | 3 | 8 | 20 | 10 | 22 |
| 48 | 48 | 49.5 | 65 | 48.4 | 145 | 4.5 | 8 | 20 | 11 | 22 |

Dimension for KD-T spindle



1. KD model can be used for KD-T spindle.
2. C dimension shows length from end of finger bolt to end of spindle. (refer to P. 443)
3. In case of heat treatment on the spindle, don't carburize thread (M) portion.
4. For 30° taper gauge information, please contact NT.

| Size | d _{G6} | d ₂ +0.02 / -0.08 | D _{Min} | d ₁ | L ± 0.1 | L ₁ +0.2 / +0.1 | L ₂ | L ₃ | W _{C10} | M _{P=1} |
|------|-----------------|------------------------------|------------------|----------------|---------|----------------------------|----------------|----------------|------------------|------------------|
| 14T | 14 | 15.5 | 20 | 14.4 | 68 | 3 | 5 | 15 | 8 | 10 |
| 16T | 16 | 17.5 | 25 | 16.4 | 72.5 | 3 | 5 | 15 | 8 | 12 |
| 19T | 19 | 20.5 | 28 | 19.4 | 82.5 | 3 | 5 | 15 | 9 | 12 |
| 20T | 20 | 21.5 | 28 | 20.4 | 82.5 | 3 | 5 | 15 | 9 | 12 |
| 22T | 22 | 23.5 | 32 | 22.4 | 89.5 | 3 | 5 | 15 | 10 | 16 |
| 24T | 24 | 25.5 | 32 | 24.4 | 89.5 | 3 | 5 | 15 | 10 | 16 |
| 25T | 25 | 26.5 | 35 | 25.4 | 105 | 3 | 8 | 20 | 10 | 18 |
| 26T | 26 | 27.5 | 35 | 26.4 | 105 | 3 | 8 | 20 | 10 | 18 |
| 28T | 28 | 29.5 | 38 | 28.4 | 105 | 3 | 8 | 20 | 10 | 18 |
| 30T | 30 | 31.5 | 40 | 30.4 | 105 | 3 | 8 | 20 | 10 | 18 |
| 32T | 32 | 33.5 | 42 | 32.4 | 123 | 3 | 8 | 20 | 10 | 22 |
| 35T | 35 | 36.5 | 45 | 35.4 | 123 | 3 | 8 | 20 | 10 | 22 |
| 36T | 36 | 37.5 | 45 | 36.4 | 123 | 3 | 8 | 20 | 10 | 22 |
| 48T | 48 | 49.5 | 65 | 48.4 | 145 | 4.5 | 8 | 20 | 11 | 22 |