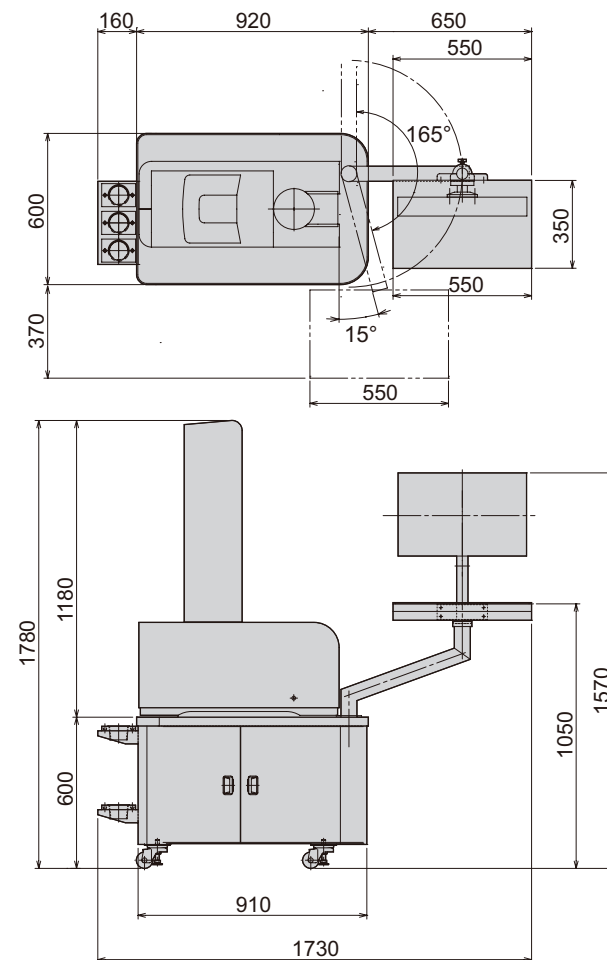


## Specification of AOTP

External dimensions	1730x600x1780 (DxWxH)
Weight	280kg
Power supply	100 ~ 240V AC, 50/60Hz
Power consumption	300W
Air pressure	0.4 ~ 0.6Mpa
Measurement	X-axis $\varnothing 400\text{mm}$ Z-axis      500mm
Minimum reading	0.001mm
Spindle Size	BT50 (Adapters for different spindle sizes available.) 1. When using an adapter, Z-axis measurement area will be narrower due to the height of the adapter. 2. Manual spindle rotation. Motor drive can be added as an option.
Clamp method	Mechanical clamp
Specifications of camera	1.3 million pixel CCD monochrome
Screen magnification ratio	30× Magnification
Display size	23.6 inch
Cutting edge measurement range	9.0 x 6.5 mm
Menu manipulation method	Touch panel, mouse, keyboard
Language selection	Japanese, English
Accessories	Adapter tray

- Switchable between Inch and Metric display.
- Label printer is sold separately.
- Specifications and design of the product are subject to change without notice.



Model	Retention Stud
AOTP-500-1A	PSB-7, PSB-8, PSB-14, PSB-19, PSB-7-OH, PSB-8-OH
AOTP-500-1B	PSB-20
AOTP-500-1C	PSB-17
AOTP-500-2D	PSB-24
AOTP-500-2E	PSB-50P

- Please select a model based on the retention stud type.
- Retention stud not shown in the above chart can be also used. Please contact NT Tool Corporation for details.

**NT TOOL (THAILAND) CO.,LTD.**

HEAD OFFICE : [www.nttool.com](http://www.nttool.com)

**THAILAND OFFICE & FACTORY** 222 Moo 1 Hi-tech Industrial Estate, Banpho, Bang pa-in, Ayuthaya 13160, Thailand  
**INDONESIA OFFICE** Jl. Mitra Raya II Blok E No.3, Kaw. Industri Mitrakarawang Parungmulya, Ciampel, Karawang, Jawa Barat, 41361, Indonesia  
**CHINA OFFICE** Room N, Floor15, MeiXin building, 728 The Xizangzhong Rd., Shanghai 200001 P.R.China  
**HEAD OFFICE** 1-7-10, Yoshikawa-cho, Takahama-City, Aichi, 444-1386 Japan  
**TOKYO OFFICE / OSAKA OFFICE / HIROSHIMA OFFICE / IIDA FACTORY**  
**USA OFFICE** 318 Seaboard Lane Suite 301 Franklin TN, 37067 U.S.A.  
**EUROPE OFFICE** Siemensstrasse 17A, 61449 Steinbach / Ts., Germany

2013.11



## Contactless Optical Tool Presetter **AOTP**



**User friendly!**

**NT's original "easy to operate" optical tool presetter.**

- **Contactless measurement does not damage cutting edges.**  
Suitable for expensive cutting tools such as diamond and CBN.
- **Easy operation reduces human errors.**
- **Cutting tools in various shapes can be measured.**
- **Tightening of collet holder is possible on the presetter. ( Up to 60Nm )**  
Please move the camera away from the spindle when tightening.



**NT TOOL CORPORATION**

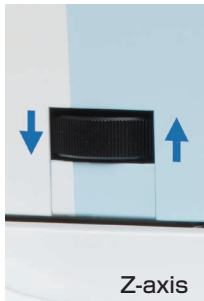
# Easy to use! Well thought out operational design.

## User Friendly Mechanical Body



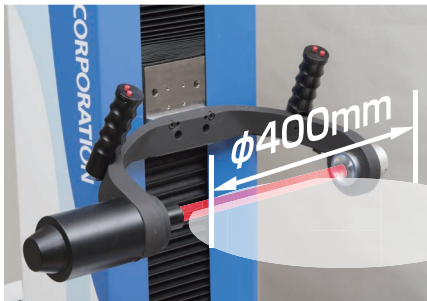
### Camera Handle

Simple one hand operation.  
Movable in X-axis direction or  
Z-axis direction separately/  
simultaneously.



### Fine Adjustment Dial for Z-axis / X-axis

Quick camera positioning by  
rotating the dial.



### Camera Arm

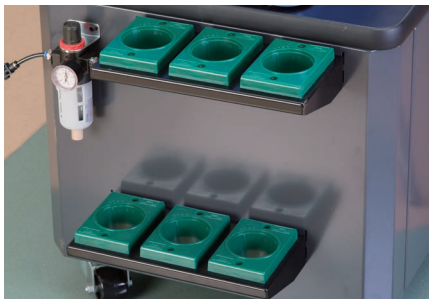
Measurement up to dia.400mm  
is possible.



### Tightening of a collet holder is possible.

(Up to 60Nm)  
Move away the camera from the spindle  
when tightening.

Adjustment of cutting tool  
projection length and runout  
measurement / adjustment can  
be done in one spot.



### Adapter Tray Equipped

Frequently used adapters and  
holders can be placed nearby.



### Cutting Tool Projection Length Adjustment (Option)

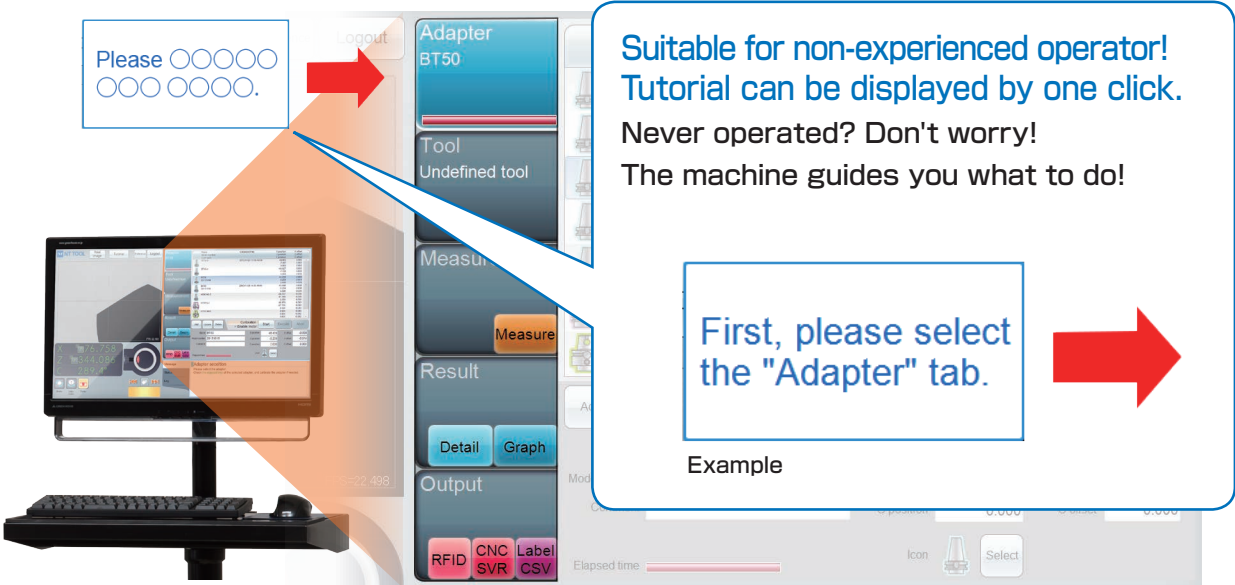
An operation handle for cutting  
tool projection length adjustment  
can be added.

### Mechanical Clamp

400kg air cylinder firmly clamps  
the tool holder. Good repetitive  
accuracy of tool holder  
clamping/unclamping.



## Easy-to-use Software with Tutorial Function.



## Basic Function



①Camera (Captured Image)  
Actual field of view 9.0mm × 6.5mm  
30× Magnification  
35× Digital Zoom

②Coordinates  
X=Radius/Diameter, Z=Height,  
C=Rotational Position.  
\*X and Z value indicates position of the  
camera center when not measuring.

③Magic Eye  
Cutting edge detection

④Break  
Spindle can be stopped at any location.  
⑤Index Break  
Spindle can be pin-locked at 90 degrees.

⑥Clamp / Unclamp

⑦Spindle Control  
Forward / reverse to the next / previous  
cutting edge.  
☞ : Free the motor.

⑧Operation Order Tab  
⑨Operation Field  
⑩Message Field

The software can be customized upon request.  
Please contact NT Tool Corporation.