

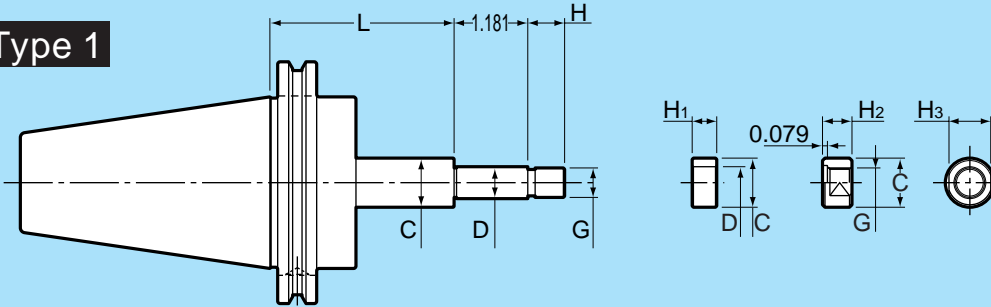
Side Cutter Arbor

CAT / SCA Metric

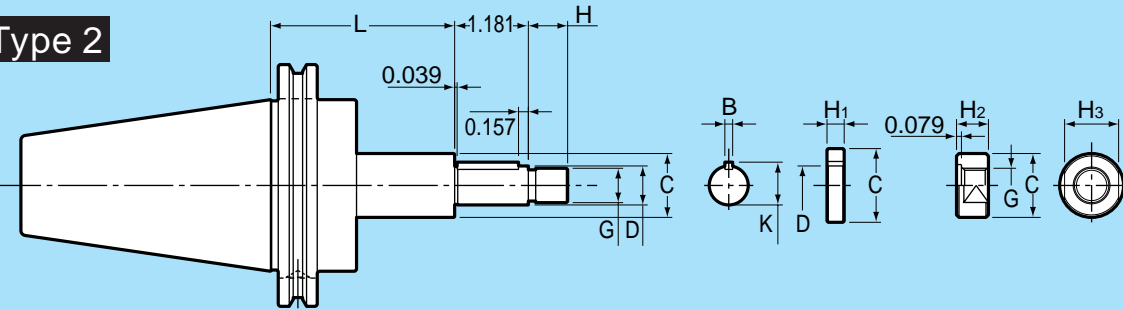
Feature

Special Anti-rust surface treatment

Type 1



Type 2



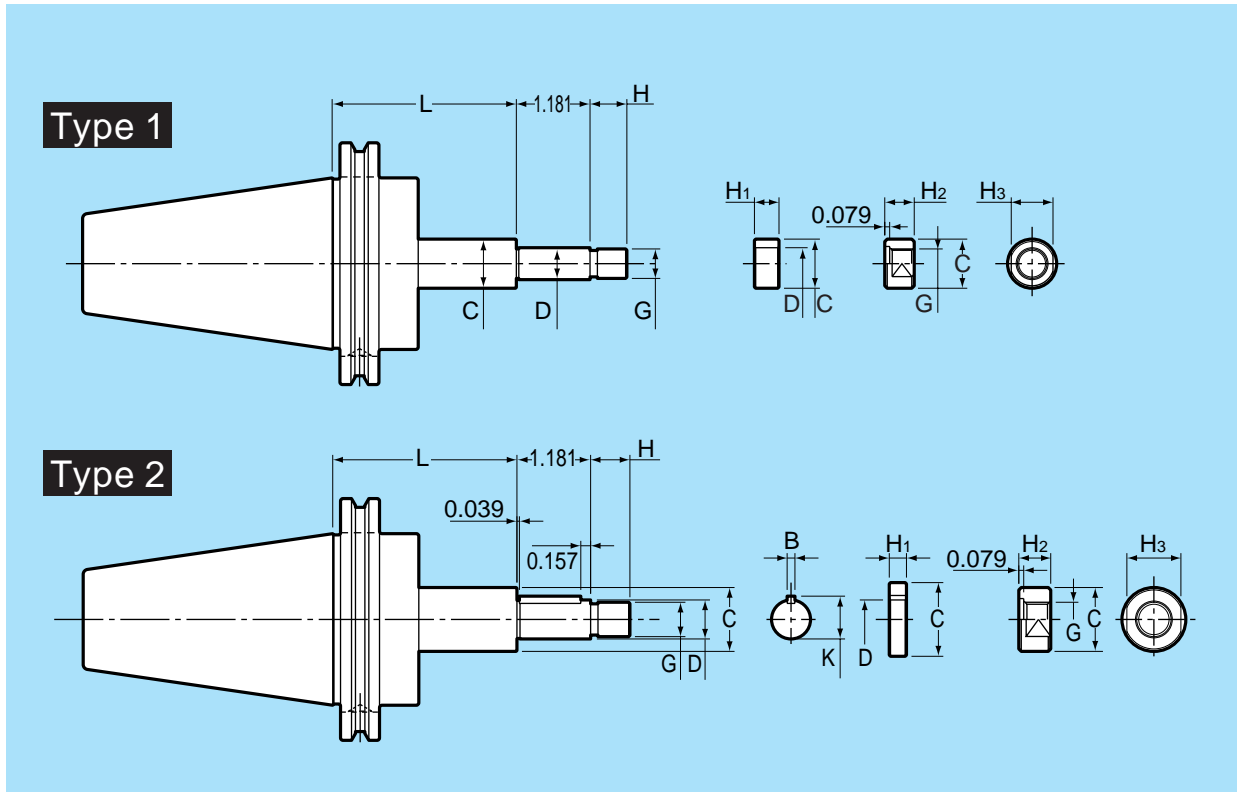
Part Number	Type	D (mm) ($\frac{h10}{h6}$)	L	C	G (mm)	H	B	K	H ₁	H ₂	H ₃
CAT 40	1	13	2.362 3.543	0.787	M12 × 1.25	0.591	—	—	—	0.472	0.669 (17mm)
		16	2.953 4.134	1.024	M14 × 1.5	0.630	0.157	0.677	—	0.512	0.866 (22mm)
	2	22	2.953 4.724	1.339	M20 × 1.5	0.827	0.236	0.929	0.118, 0.197, 0.276 0.315, 0.394, 0.472	0.709	1.181 (30mm)
		27	2.953 4.724	1.575	M24 × 2	0.984	0.276	1.142	—	0.827	1.260 (32mm)
		32	3.543	1.811	M30 × 2	1.181	0.315	1.339	—	1.024	1.614 (41mm)
		40	3.543	2.165	M36 × 3	1.417	0.394	1.673	—	1.220	1.811 (46mm)
CAT 50	1	13	2.953 4.134	0.787	M12 × 1.25	0.591	—	—	—	0.472	0.669 (17mm)
		16	3.543 4.724	1.024	M14 × 1.5	0.630	0.157	0.677	—	0.512	0.866 (22mm)
	2	22	3.543 5.315	1.339	M20 × 1.5	0.827	0.236	0.929	0.118, 0.197, 0.276 0.315, 0.394, 0.472	0.709	1.181 (30mm)
		27	3.543 5.315	1.575	M24 × 2	0.984	0.276	1.142	—	0.827	1.260 (32mm)
		32	3.543 5.314	1.811	M30 × 2	1.181	0.315	1.339	—	1.024	1.614 (41mm)
		40	3.543 5.315	2.165	M36 × 3	1.417	0.394	1.673	—	1.220	1.811 (46mm)
		46	3.543 5.315	2.165	M36 × 3	1.417	0.394	1.673	—	1.220	1.811 (46mm)
48	3.543 5.315	2.165	M36 × 3	1.417	0.394	1.673	—	1.220	1.811 (46mm)		

Ordering Example CAT40-SCA22-75

Side Cutter Arbor

CAT / SCA Inch

Feature Special Anti-rust surface treatment



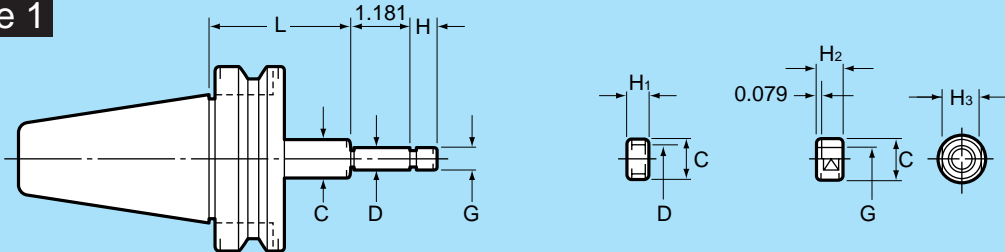
Part Number	Type	D ($\frac{D}{h6}$)	L	C	G (mm)	H	B	K	H ₁	H ₂	H ₃	
CAT 40	- SCA12.7 - 60 - 90	1	0.500	$\frac{2.362}{3.543}$	0.787	M12 × 1.25	0.591	—	—	0.472	0.669 (17mm)	
			0.625	$\frac{2.953}{4.134}$	1.024	M14 × 1.5	0.630	0.125	0.686	0.512	0.866 (22mm)	
	- SCA22.225 - 75 - 120	2	0.875	$\frac{2.953}{4.724}$	1.339	M20 × 1.5	0.827	—	0.938	0.118, 0.197, 0.276 0.315, 0.394, 0.472	0.709	1.181 (30mm)
			1.000	$\frac{2.953}{4.724}$	1.575	M24 × 2	0.984	0.250	1.094	0.827	1.260 (32mm)	
	- SCA25.4 - 75 - 120	2	1.000	$\frac{2.953}{4.724}$	1.575	M24 × 2	0.984	0.250	1.094	0.827	1.260 (32mm)	
	- SCA31.75 - 90		1.250	$\frac{3.543}{4.724}$	1.811	M30 × 2	1.181	0.312	1.375	1.024	1.614 (41mm)	
CAT 50	- SCA12.7 - 75 - 105	1	0.500	$\frac{2.953}{4.134}$	0.787	M12 × 1.25	0.591	—	—	0.472	0.669 (17mm)	
			0.625	$\frac{3.543}{4.724}$	1.024	M14 × 1.5	0.630	0.125	0.686	0.512	0.866 (22mm)	
	- SCA22.225 - 90 - 135	2	0.875	$\frac{3.543}{5.315}$	1.339	M20 × 1.5	0.827	—	0.938	0.118, 0.197, 0.276 0.315, 0.394, 0.472	0.709	1.181 (30mm)
			1.000	$\frac{3.543}{5.315}$	1.575	M24 × 2	0.984	0.250	1.094	0.827	1.260 (32mm)	
	- SCA25.4 - 90 - 135	2	1.000	$\frac{3.543}{5.315}$	1.575	M24 × 2	0.984	0.250	1.094	0.827	1.260 (32mm)	
	- SCA31.75 - 90 - 135		1.250	$\frac{3.543}{5.314}$	1.811	M30 × 2	1.181	0.312	1.375	1.024	1.614 (41mm)	
	- SCA38.1 - 90 - 135	2	1.500	$\frac{3.543}{5.315}$	2.165	M36 × 3	1.417	0.375	1.656	1.220	1.811 (46mm)	

Ordering Example CAT40-SCA25.4-75

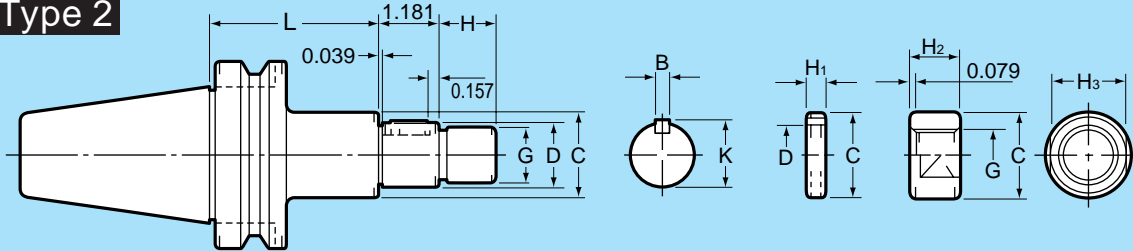
Side Cutter Arbor BT / SCA Metric

Feature Special Anti-rust surface treatment

Type 1



Type 2



Part Number	Type	D (mm) ($\frac{H9}{h6}$)	L	C	G (mm)	H	B	K	H ₁	H ₂	H ₃	
BT 30	-SCA13 - 75	1	13	0.787	M12 × 1.25	0.591	—	—		0.472	0.669 (17mm)	
	-SCA16 - 75	2	16	2.953	1.024	M14 × 1.5	0.630	0.157	0.677	0.118, 0.197, 0.276 0.315, 0.394, 0.472	0.512 0.866 (22mm)	
	-SCA22 - 75		22	1.339	M20 × 1.5	0.827	0.236	0.929	0.709	1.181 (30mm)		
BT 40	-SCA13 - 60 - 90	1	13	$\frac{2.362}{3.543}$	0.787	M12 × 1.25	0.591	—	—	0.472	0.669 (17mm)	
	-SCA16 - 75 -105	2	16	$\frac{2.953}{4.134}$	1.024	M14 × 1.5	0.630	0.157	0.677		0.512 0.866 (22mm)	
	-SCA22 - 75 -120		22	$\frac{2.953}{4.724}$	1.339	M20 × 1.5	0.827	0.236	0.929	0.118, 0.197, 0.276 0.315, 0.394, 0.472	0.709	1.181 (30mm)
	-SCA27 - 75 -120		27	$\frac{2.953}{4.724}$	1.575	M24 × 2	0.984	0.276	1.142	0.827	1.260 (32mm)	
	-SCA32 - 90		32	3.543	1.811	M30 × 2	1.181	0.315	1.339	1.024	1.614 (41mm)	
	-SCA13 - 75 -105		1	13	$\frac{2.953}{4.134}$	0.787	M12 × 1.25	0.591	—	—	0.472	0.669 (17mm)
-SCA16 - 90 -120	2	16	$\frac{3.543}{4.724}$	1.024	M14 × 1.5	0.630	0.157	0.677		0.512 0.866 (22mm)		
-SCA22 - 90 -135		22	$\frac{3.543}{5.315}$	1.339	M20 × 1.5	0.827	0.236	0.929	0.118, 0.197, 0.276 0.315, 0.394, 0.472	0.709	1.181 (30mm)	
-SCA27 - 90 -135		27	$\frac{3.543}{5.315}$	1.575	M24 × 2	0.984	0.276	1.142	0.827	1.260 (32mm)		
-SCA32 - 90 -135		32	$\frac{3.543}{5.314}$	1.811	M30 × 2	1.181	0.315	1.339	1.024	1.614 (41mm)		
-SCA40 - 90 -135	40	$\frac{3.543}{5.315}$	2.165	M36 × 3	1.417	0.394	1.673	1.220	1.811 (46mm)			

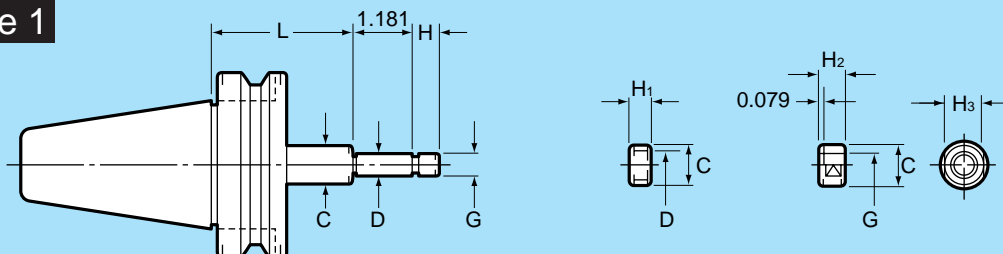
Ordering Example BT40-SCA22-75

Side Cutter Arbor

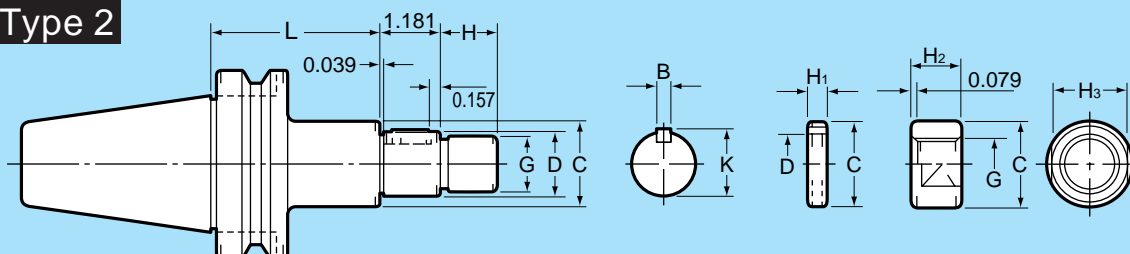
BT / SCA Inch

Feature Special Anti-rust surface treatment

Type 1



Type 2



Part Number	Type	D ($\frac{D}{h6}$)	L	C	G (mm)	H	B	K	H ₁	H ₂	H ₃	
BT 30	-SCA12.7 - 75	1	0.500	0.787	M12 × 1.25	0.591	—	—	—	0.472	0.669 (17mm)	
	-SCA15.875 - 75	2	0.625	2.953	1.024	M14 × 1.5	0.630	0.686	0.118, 0.197, 0.276	0.512	0.866 (22mm)	
	-SCA22.225 - 75		0.875	1.339	M20 × 1.5	0.827	0.938	0.315, 0.394, 0.472				
BT 40	-SCA12.7 - 60 - 90	1	0.500	$\frac{2.362}{3.543}$	0.787	M12 × 1.25	0.591	—	—	0.472	0.669 (17mm)	
	-SCA15.875 - 75 - 105	2	0.625	$\frac{2.953}{4.134}$	1.024	M14 × 1.5	0.630	0.686	0.118, 0.197, 0.276	0.512	0.866 (22mm)	
	-SCA22.225 - 75 - 120		0.875	$\frac{2.953}{4.724}$	1.339	M20 × 1.5	0.827	0.938				
	-SCA25.4 - 75 - 120		1.000	$\frac{2.953}{4.724}$	1.575	M24 × 2	0.984	0.250				1.094
	-SCA31.75 - 90		1.250	3.543	1.811	M30 × 2	1.181	0.312				1.375
BT 50	-SCA12.7 - 75 - 105	1	0.500	$\frac{2.953}{4.134}$	0.787	M12 × 1.25	0.591	—	—	0.472	0.669 (17mm)	
	-SCA15.875 - 90 - 120	2	0.625	$\frac{3.543}{4.724}$	1.024	M14 × 1.5	0.630	0.686	0.118, 0.197, 0.276	0.512	0.866 (22mm)	
	-SCA22.225 - 90 - 135		0.875	$\frac{3.543}{5.315}$	1.339	M20 × 1.5	0.827	0.938				
	-SCA25.4 - 90 - 135		1.000	$\frac{3.543}{5.315}$	1.575	M24 × 2	0.984	0.250				1.094
	-SCA31.75 - 90 - 135		1.250	$\frac{3.543}{5.314}$	1.811	M30 × 2	1.181	0.312				1.375
	-SCA38.1 - 90 - 135		1.500	$\frac{3.543}{5.315}$	2.165	M36 × 3	1.417	0.375				1.656
								0.827	1.260 (32mm)			

Ordering Example BT40-SCA25.4-75