

Shrink Fit Heating System

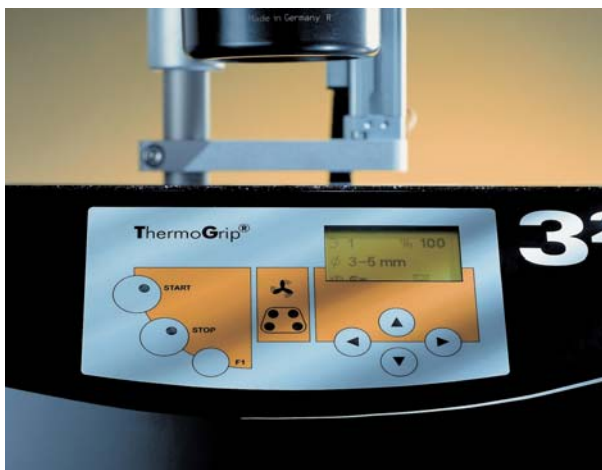


For Shrink Fit heating systems see pages 96~100.

Shrink Fit Heating System

High Power Magnetic Induction Unit

ISG3200



Technical Specifications

Dimensions:	23 x 23.3 x 40.6 (D x W x H)
Weight:	95 lbs.
Power Supply:	3 x 400V
Power output:	10 KW
Range:	0.250 ~ 2.000 HSS Shank Tools 0.125 ~ 2.000 Carbide Shank Tools
Max Gauge Length:	17.7

Features

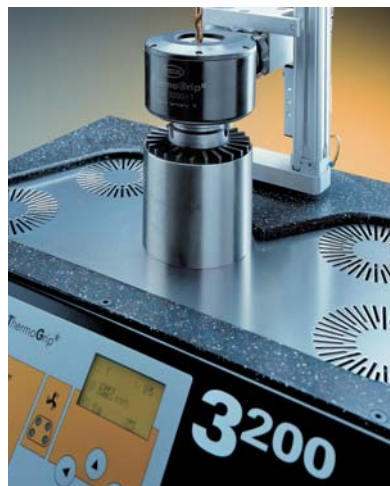
- Highest clamping force available
- Excellent T.I.R. (0.0002)
- Fast, easy, & reliable
- 0.250 ~ 2.000 HSS Shank Tools
- 0.125 ~ 2.000 Carbide Shank Tools
- Excellent for high speed applications.
- Shrink fit holders do not require any components like collets or nuts.
- This allows for a symmetrical balanced design.

Simple operation

Select the tool diameter range and press the start button. The ISG3200 automatically moves the induction coil to the shrink fit holder, heats it and returns the coil to its original position. The cooling fans start automatically and LED lights indicate which fan is in use. Four cooling fans are available for multiple holder use. Cutting tools can be removed and inserted in 10 seconds.

Universal Bench Top Design

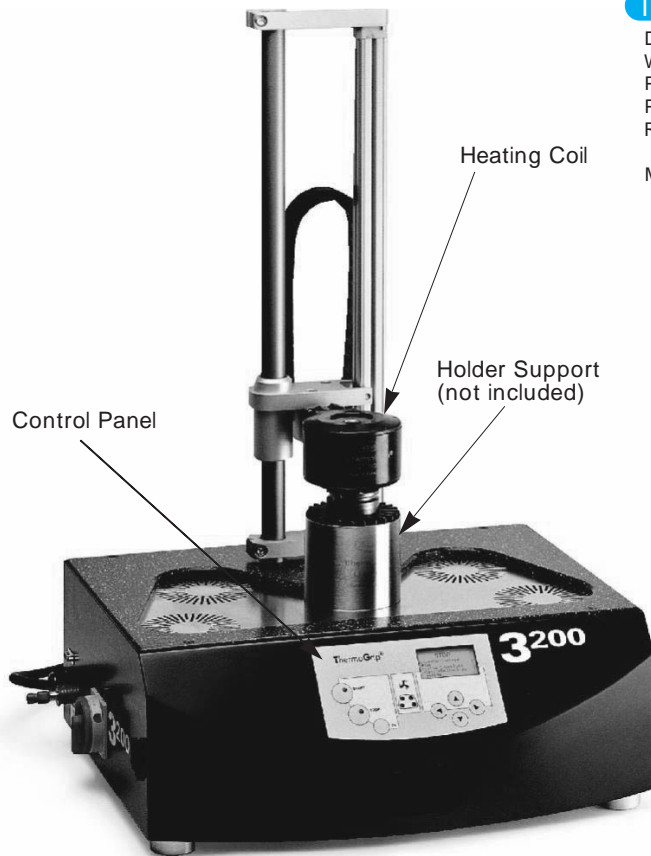
The ISG3200 has a menu assisted operating system. Data is shown on a graphic display. All the shrinking parameters are displayed simultaneously and data for holders with special geometry can be stored in the memory. The integrated processor controls the heat output and duration of the heating time automatically. Focused and localized heating prevents heat transfer to the holder body allowing safe operation.



Shrink Fit Heating System ISG 3200

High Power Magnetic Induction Unit

ISG 3200

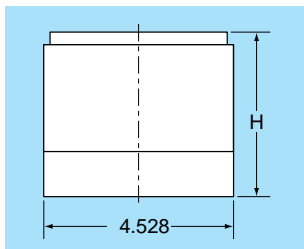


Technical Specifications

Dimensions : 23" x 23.3" x 40.6" (D x W x H)
 Weight : 95 lbs.
 Power Supply : 3 x 400V
 Power output : 10 KW
 Range : 0.250" ~ 2.000" HSS Shank Tools
 0.125" ~ 2.000" Carbide Shank Tools
 Max Gauge Length : 17.7"

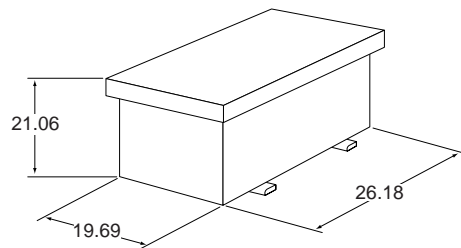
Accessories

Holder Support for Induction Type



Part Number	H	lbs	
SRK-SPH	-BT 30	4.212	2.9
	-BT 40, CAT40		
	-BT 50, CAT50		
	-HSK 32	4.212	2.9
	-HSK 40		
	-HSK 50		
	-HSK 63		
-HSK100			

Transformer ISGTR/200-400V/11.1kVA



Specifications

Weight : 220 lbs.

Shrink Fit Heating System

Magnetic Induction Unit ISG2200



Features

Insertion and removal of cutting tools can be done within 10 seconds.
 Due to the efficient magnetic induction heating process, quick shrinking in and out is achieved.
 Cooling fan is incorporated.
 Cooling down process is automatically started.

Economy type Heater SRK-HB2



Features

Moderate price
 Space saving design
 Heating time 1-9 min.
 No need for air piping
 When ordering a heater, please select both hot air distributor and holder support to meet your requirements.

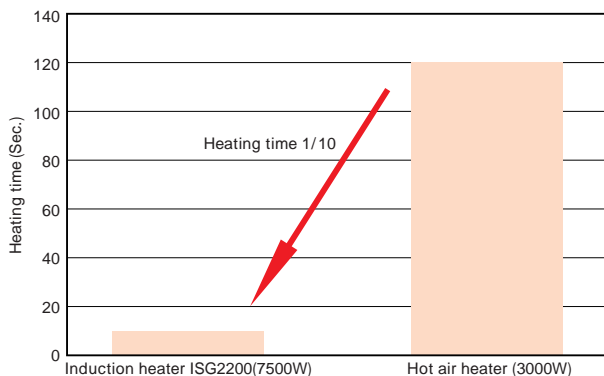
Technical Specifications

Cemented carbide shank tool (within h6 shank tolerance) should be used.

	Chucking range	Heating time	Max Gauge length
ISG2200	0.236 - 0.787	within 10 seconds	8.27 (for 50 taper) 9.45 (for all other taper)
SRK-HB2	0.118 - 1.260	1-9 minutes	11.8

Heating Time of Induction Type (Sec.)

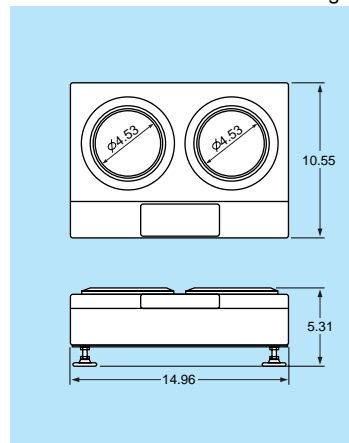
Comparison of heating time (SRD12 heavy type chuck)



Induction heating system
 Due to localized heating,
 effective shrink fit chucking is achieved.

Accessories

Cooler— To shorten the cooling time of heated holder.



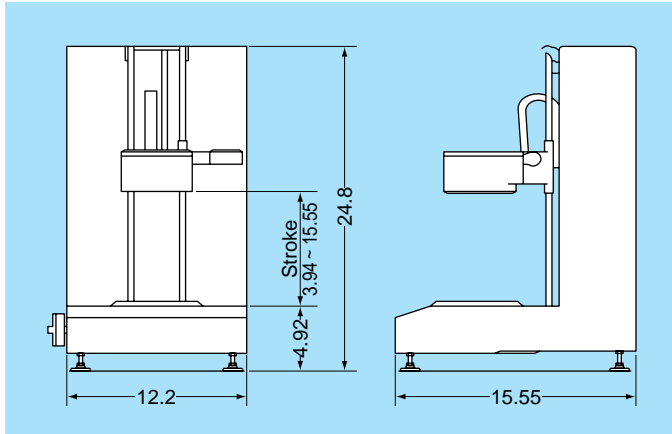
Model	lbs
SRK-C2	12.2

Power supply :
 200-230V/50,60Hz
 Rated Ampere : 0.5A
 Cooling Time : 10 min.
 The time is dependent
 on the holder size.

Shrink Fit Heating System ISG 2200

Induction Heater

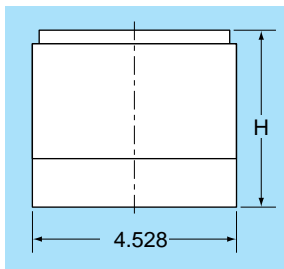
ISG 2200



Technical Specifications

Voltage : Triple Phase 400V 50/60Hz
 Output : 7.5kW
 Weight : 55.2lbs
 Cutter : Carbide Shank h6 Cutter
 Chuck : 1-piece type Chuck 0.236-0.787
 Power Cord : 78.7inch
 Cemented carbide shank tool (with h6 tolerance) should be used.

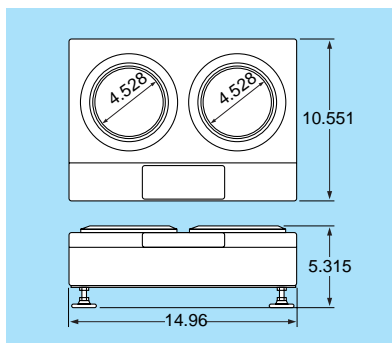
Holder Support for Induction Type



Part Number	H	lbs	
SRK-SPH	-BT 30	4.212	2.9
	-BT 40, CAT40		
	-BT 50, CAT50	5.784	3.3
	-HSK 32	4.212	2.9
	-HSK 40		
	-HSK 50		
-HSK 63			
-HSK100			

Accessories

Cooler SRK-C2

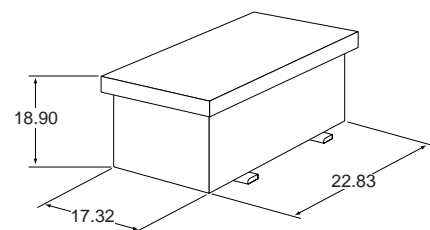


Specifications

2 holders can be cooled simultaneously.
 Cooling Method : Fan
 Power Supply : Single phase 100 ~ 230V 50/60Hz
 Rated Amp. : 1A
 Power Cord : 78.7inch
 Weight : 12.2lbs
 Holder support : Not included
 (should be ordered separately)

Transformer

ISGTR/200-400V/8.3kVA



Specifications

Weight : 176lbs.

Ordering Example:

Heater
 ISG 2200
 ISG 3200

+

Holder Support

+

Accessories

Shrink Fit Heating System

SRK/HB2

Economy Type Heater

Economy type Heating System

SRK-HB 2(3000W)

Economical
Simple Operation
Compact
Heating Time:1-9min

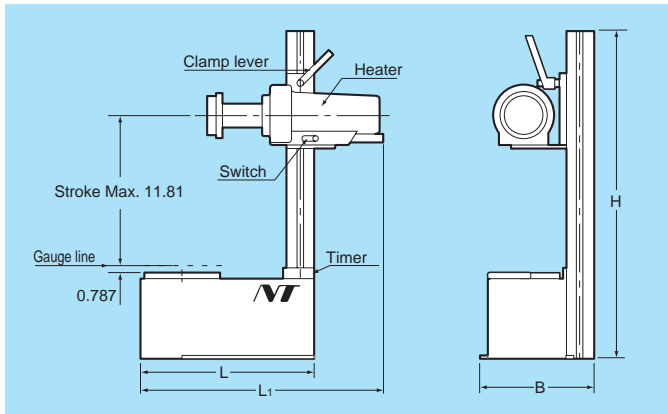
When Ordering a heater, Please select both heat distributor and holder support to meet your requirement.
Available in all taper sizes (HSK, BT, CAT).

Application

Heating system for thermal expansion of shrink fit holders.
Heat generation = 482 ~ 662 F

Specifications

Heating method : Hot air
Pwer Supply : 200 ~ 230V / 50,60Hz
Rated ampere : 6A (200-230V)
Accessories : Power cord(3m),countdown timer and a pair of heat-resistant gloves are included.(Hot air distributor and holder support are sold separately.)
Cemented carbide shank tool (with h6 tolerance) should be used.



Part Number	L	B	H	L ₁	VAC	lbs
SRK -HB2-200	10.83	7.48	25.98	16.38	200	16.5 (7.5kg)
-HB2-220					220	
-HB2-230					230	

Ordering Example:

Heater SRK-HB2

+

Hot Air Distributor

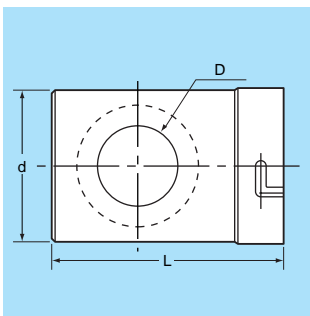
+

Holder Support

+

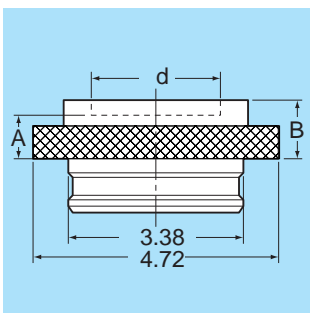
Accessories

Hot air distributor (Heating head)



Part Number	Chuck	Tool dia.	D	d	L
SRK-HA	SRD type	0.984-1.26	1.575	3.110	4.803
		0.472-0.787	1.260	2.402	3.661
		0.236-0.394	1.024	1.693	3.346
	SRS type	0.118-0.197	0.591	1.693	3.346
		0.472-0.787	1.063	2.402	3.425
-HE15S		0.118-0.394	0.591	1.693	3.031

Holder Support

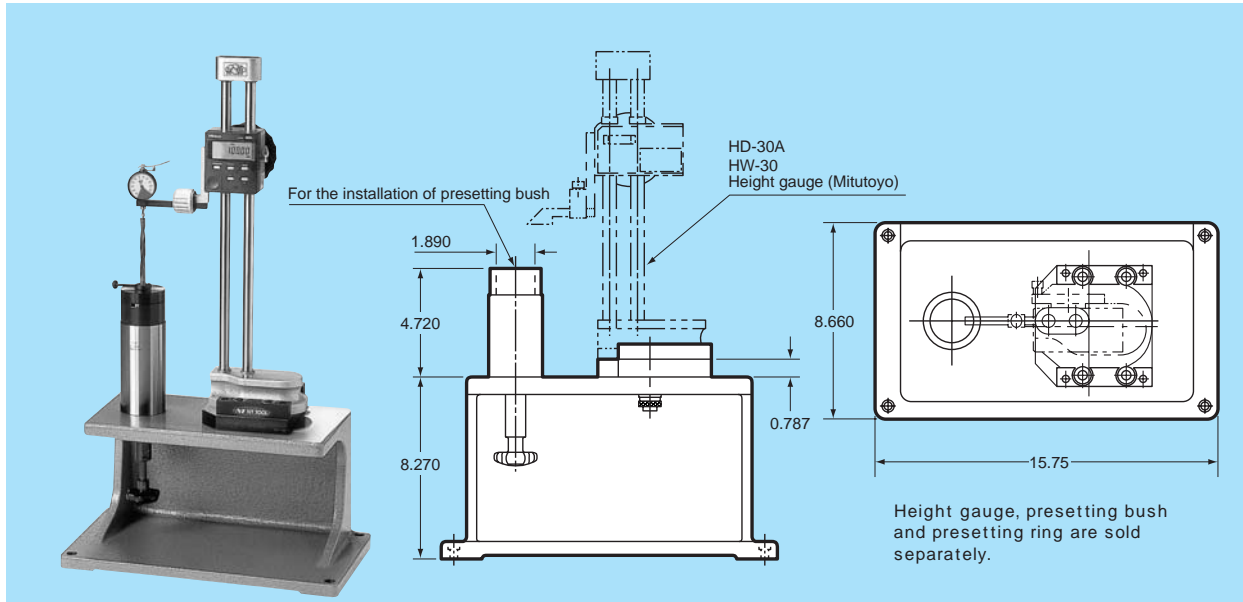


Part Number	d	A	B
SRK-SP	-HSK25	0.787	1.063
	-HSK32		
	-HSK40		
	-BT30		
	-HSK63, BT40, CAT40		
	-HSK100, BT50, CAT50		1.181

Shrinker Fit Heating System Accessories SPN - SRK

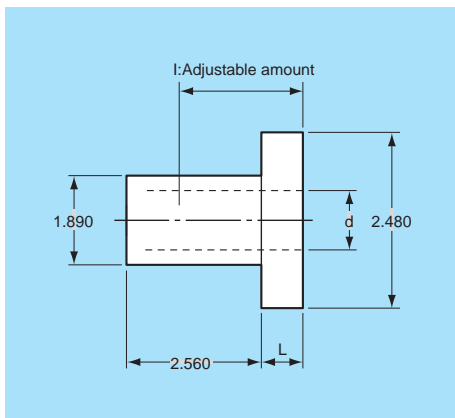
Accessories

Presetting gauge



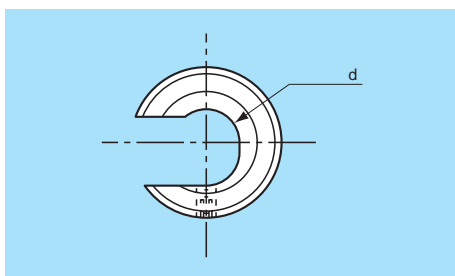
Part Number
SPN2-SRK-PS1

Presetting bush



Part Number	ϕ (mm)	L	l	
SPN	-SRK 3-B1	3	0.394	0.394 ~ 2.165
	-SRK 4-B1	4	0.472	0.472 ~ 2.244
	-SRK 5-B1	5	0.591	0.591 ~ 2.362
	-SRK 6-B1	6	1.024	1.024 ~ 2.795
	-SRK 8-B1	8	1.260	1.260 ~ 3.031
	-SRK10-B1	10	1.457	1.457 ~ 3.228
	-SRK16-B1	16	1.575	1.575 ~ 3.346
	-SRK20-B1	20	1.654	1.654 ~ 3.425
	-SRK20-B2	20	2.165	2.165 ~ 3.937
	-SRK25-B1	25	1.890	1.890 ~ 3.661
	-SRK25-B2	25	2.559	2.165 ~ 4.331
	-SRK32-B1	32	2.008	2.008 ~ 3.780
	-SRK32-B2	32	2.953	2.953 ~ 4.724

Presetting ring



Part Number	ϕ (mm)
SPN2-SRK-PR- d	3, 4, 5, 6, 8, 10, 12, 16, 20, 25, 32