

Straight Drill Chuck D C

Application

- Special purpose machines
- Transfer machines
- Machining centers
- NC lathes
- Automatic lathes
- Drilling machines, etc.

Feature

Large Range of Shanks

- Model DC in many trapezoidal shanks are available for \varnothing 2.8 - 22.0mm diameter shanks.
- Model ED-A in many straight shanks are available for \varnothing 2.8 - 16.0mm diameter shanks.
- In addition, small \varnothing 0.5 - 7.0mm capacity chucks are available in Tr., straight and morse taper shanks.

No Rust —Special Surface Treatment

- No rust under normal use conditions.
No deterioration of precision due to rust.
Minimum maintenance required.

Secure Gripping

- Drill shanks are securely and evenly gripped by EDC collets.

Reduction of Setup Time —Easy collet change.

- Simply loosen the nut, and the drill can be easily removed from the drill chuck. The straight drill chucks can be turned into a quick change tooling system by combination use with drilling chuck and SSMA nut.

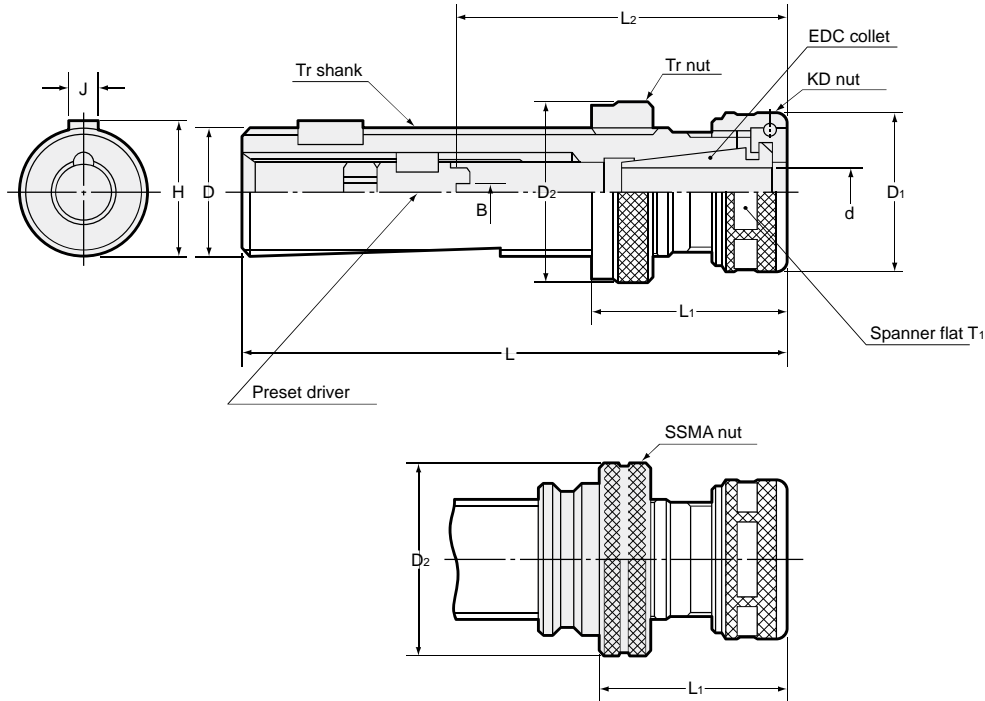
Reduction of Tool Cost

- Inexpensive straight shank drills can replace morse taper drills for tool cost reduction.



Straight Drill Chuck D C

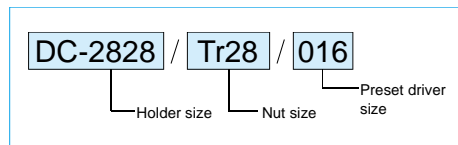
Tr Shank



Part Number	D h ₆	Chucking ranged	B	L ₂	Preset driver	L	D ₁	D ₂	L ₁	H	J	T ₁
DC-1619 / Tr16 SSMA16	16	2.8 - 9	0	18 - 58	DCS -009 -409	103	26	25	35 - 50	17.1	5	24
			4	31 - 71				26	32 - 47			
DC-2019 / Tr20 SSMA20	20	2.8 - 9	0	18 - 58	DCS -009 -409	108	26	32	35 - 50	21.1	5	24
			4	31 - 71				33	32 - 47			
DC-2524 / Tr25 SSMA25	25	2.8 - 12	0	23 - 63	DCS -012 -512	118	32	37	38 - 63	26.5	5	30
			5	33 - 73				40	36 - 61			
DC-2828 / Tr28 SSMA28	28	4 - 16	0	28 - 78	DCS -016 -516 -616	122	36	40	40 - 68	29.5	6	33
			5	43 - 93				42	38 - 66			
			6	43 - 93				47	36 - 64			
DC-3228 / Tr32 SSMA32	32	4 - 16	0	28 - 78	DCS -016 -516 -616	143	46	45	40 - 68	33.5	8	42
			5	43 - 93				50	45 - 80			
			6	43 - 93				54	41 - 76			
DC-3636 / Tr36 SSMA36	36	4 - 22	0	29 - 89	DCS -022 -522 -622 -822	143	46	50	45 - 80	37.5	8	42
			5	48 - 108				54	41 - 76			
			6	48 - 108								
			8	48 - 108								

- All dimensions shown in millimeters.
- Collet and spanner wrench are sold separately. (Page 227)

Ordering Example

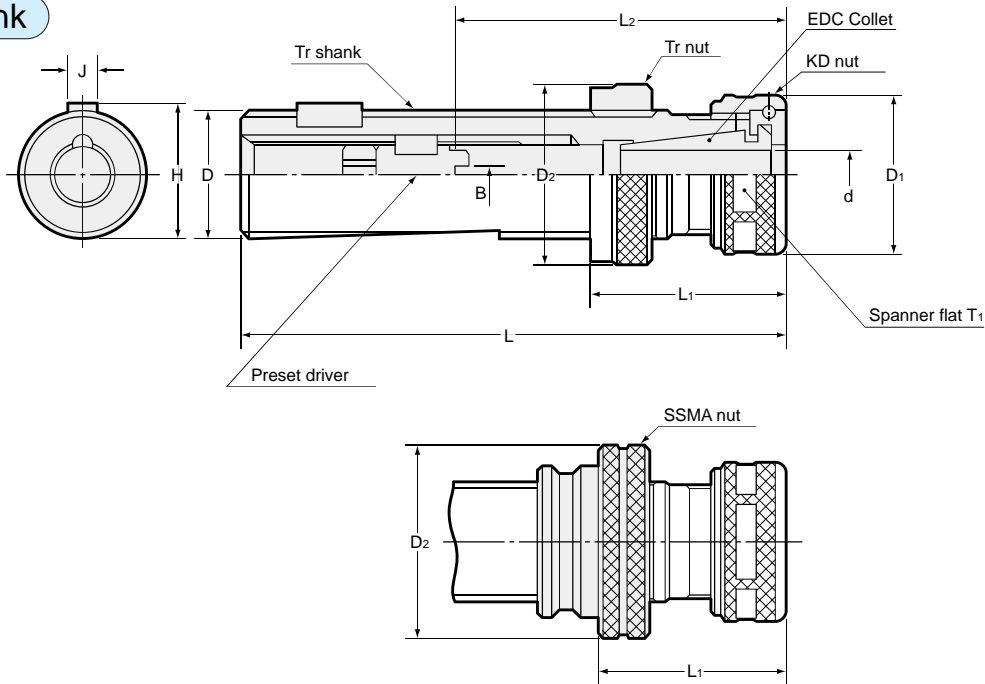


Part Number	Nut	Collet	Spanner wrench
DC	-1619	KDP-1916	EDC-d19
	-2019	KDP-2422	EDC-d24
	-2524	KDP-2825	EDC-d28
	-2828	KDP-3632	EDC-d36
	-3228		
	-3636		

Straight Drill Chuck

DC - T . N Series

Tr Shank



Part Number	D h ₆	Chucking range d	B	L ₂	Preset Driver	L	D ₁	D ₂	L ₁	H	J	T ₁	
DC-1619N / Tr16N SSMA16N(x2)	16	2.8 - 9	0 18 - 58	18 - 58	DCS -009	103	26	25 35 - 50	17.5	4	24		
4 31 - 71			26 32 - 47										
DC-1619T / Tr16x 2 SSMA16(x2)	0 18 - 58		DCS -009	25 35 - 50	17.0			3					
4 31 - 71	DCS -409		26 32 - 47										
DC-1919T / Tr19 SSMA19-20	19		0 18 - 58	18 - 58	DCS -009			32 35 - 50	21.0				
4 31 - 71	DCS -409	33 32 - 47											
DC-2019N / Tr20N SSMA20N	20		0 18 - 58	18 - 58	DCS -009	108		32 35 - 50	22.0				
4 31 - 71	DCS -409	33 32 - 47											
DC-2224T / Tr22 SSMA22	22	2.8 - 12	0 23 - 63	23 - 63	DCS -012	118		32 38 - 63	24.0		5		
5 33 - 73	DCS -512		37 36 - 61										
DC-2424N / Tr24N SSMA24-25N	24		0 23 - 63	23 - 63	DCS -012		108	32		37 38 - 63	26.0		30
5 33 - 73	DCS -512		40 36 - 61										
DC-2624N / Tr26N SSMA26-28N	26	0 23 - 63	23 - 63	DCS -012					40 38 - 63	28.6	7		
5 33 - 73		DCS -512			42 36 - 61								
DC-2624T / Tr26 SSMA26-28		0 23 - 63	23 - 63	DCS -012	122			40 38 - 63	28.0	5			
5 33 - 73	DCS -512	42 36 - 61											
DC-3028N / Tr30N SSMA30-36N	30	4 - 16	0 28 - 78	28 - 78		DCS -016	36		45 40 - 68	32.6		33	
5 43 - 93	DCS -516	54 36 - 64											
6 43 - 93	DCS -616												
DC-3536T / Tr35 SSMA35-36	35	4 - 22	0 29 - 89	29 - 89	DCS -022	143		46	50 45 - 80	38.0	7		
5 48 - 108	DCS -522												
6 48 - 108	DCS -622		54 41 - 76										
8 48 - 108	DCS -822												
DC-3636N / Tr36N SSMA36N	36	0 29 - 89	29 - 89	DCS -022				50 45 - 80	39.2	10			
5 48 - 108	DCS -522												
6 48 - 108	DCS -622												
8 48 - 108	DCS -822	54 41 - 76											

• All dimensions shown in millimeters.

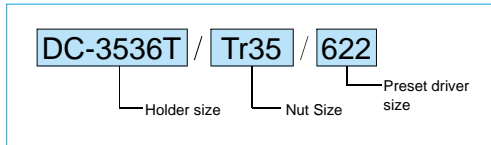
Note

- Contact NT USA if you plan to use NT straight drill chuck with SSMA nut as a quick change tooling system in combination with a drilling

Straight Drill Chuck

DC - T . N Series

Ordering Example

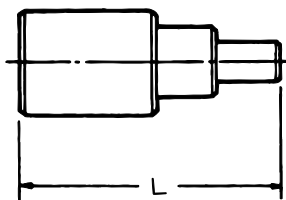


- Collet and spanner wrench are sold separately. (Page 227)

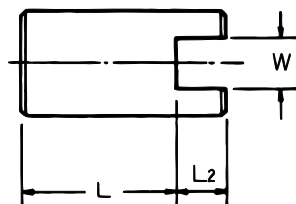
Holder	Nut	Collet	Spanner wrench	
DC	-1619N	KDP-1916	EDC-d19	S-1L
	-1619T			
	-1919T			
	-2019N			
	-2224T	KDP-2422	EDC-d24	S-3L
	-2424N			
	-2624N			
	-2624T			
	-3028N	KDP-2825	EDC-d28	S-4L
	-3536T	KDP-3632	EDC-d36	S-5L
-3636N				

Preset Driver

Type 1 (w/o tang)



Type 2 (w/tang)



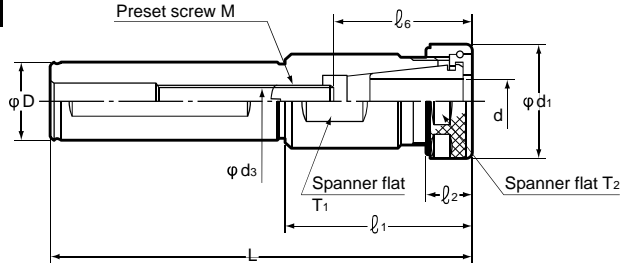
Part Number	Holder Sizes	Type	W ^{+0.3} / _{+0.2}	L	L ₂	
DCS	DC-1619, 1619N, 1619T 1919T, 2019, 2019N	1	—	28.3	—	
		2	4	15.3	3.5	
	DC-2224T, 2424N 2524, 2624T, 2624N	1	—	29.0	—	
		2	5	19.5	3.5	
	DC-2828 3028N 3228	1	—	35.0	—	
		2	5	20.0	4.0	
			6	20.0	4.0	
	DC-3536T 3636 3636N		1	—	46.5	—
			2	5	27.5	4.0
				6	27.5	4.0
				8	27.5	4.0

- All dimensions shown in millimeters.

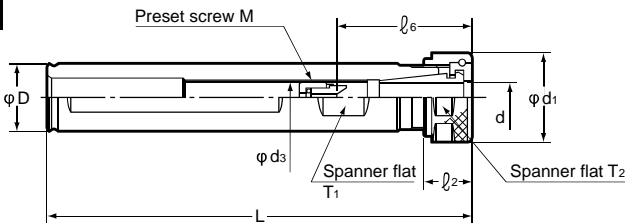
Straight Drill Chuck ED - A

Straight Shank

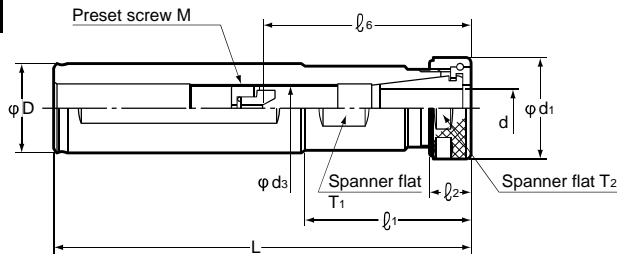
Type 1



Type 2

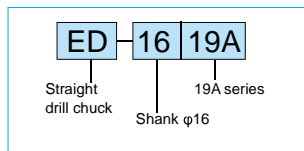


Type 3



Part Number	Chucking range d	Type	D _{h6}	L	d ₁	l ₁	l ₂	M	d ₃	l ₆	T ₁	T ₂	
ED -1619A -2019A -2219A -2519A -25419A -317519A -3219A	2.8 - 9	1	16					M8	6.8	30 - 40			
		2	20										
		3	22	125		50							
			25		26		14		M10	9.3	30 - 60	17	24
			25.4										
			31.75	150		60							
32													
ED -2028A -2228A -2528A -25428A -317528A -3228A -4028A -4228A	4 - 16	1	20										
			22										
			25	135		60		M10	8.7	43 - 55			
			25.4		36		15				27	33	
		31.75	150										
		3	32										
			40	175		75		M17	16.3	43 - 75			
			42										

Ordering Example



- All dimensions shown in millimeters.
- Collet and spanner wrench are sold separately. (Page 227)

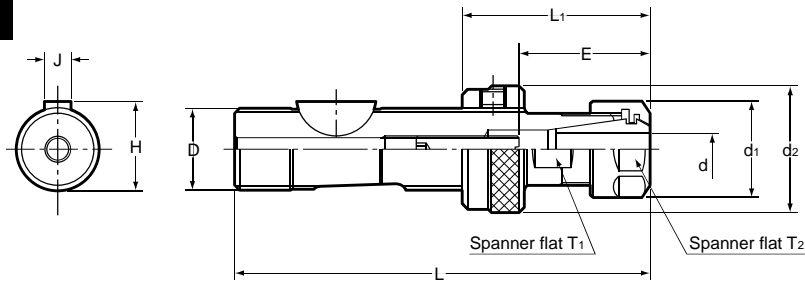
Holder size	Nut	Collet	Spanner wrench
ED-○○○19A All size	KDP-1916	EDC-d19	S-1L
ED-○○○28A All size	KDP-2825	EDC-d28	S-4L

Straight Drill Chuck

ED Small Drilling

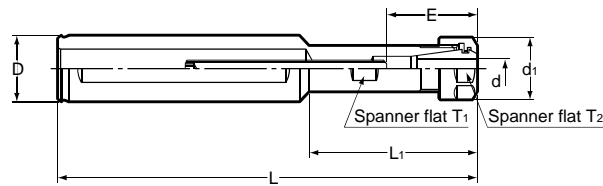
Type 1

(Tr Shank)



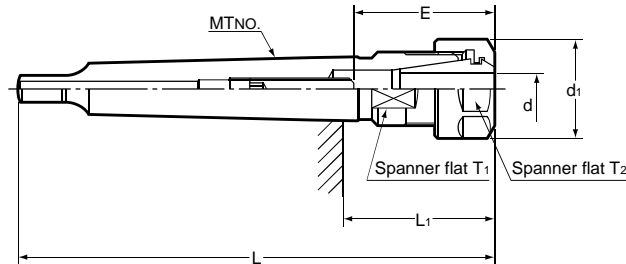
Type 2

(Straight Shank)



Type 3

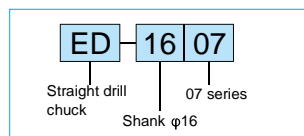
(MT Shank)



Part Number	Chucking range d	Type	D h6	MT	L	d1	d2	E	L1	H 0 -0.2	J h9	T1	T2	Collet		
-Tr1007/Tr10	0.5 - 7	1	10	—	72	18	18 - 31 (21)	18 - 31 (21)	32 - 42	10.9	3	—	—	FDC-d07A		
-Tr1207/Tr12			12	—											20	12.9
-Tr1607/Tr16			—	80											25	35 - 45
-1607		2	16	—	125	19	—	18 - 31	50	—	—	12	17			
-2007			20	—											—	—
-T007		3	—	0	85.5	—	18 - 31 (21)	—	29	—	—	—	—			
-T107			—	1	91.5	—	18 - 31	—	—	—	—	—	—			

- E dimension in bracket is valid only when the tool shank is $\phi 5.1$ mm or bigger.
- All dimensions shown in millimeters.
- Collet and spanner wrench are sold separately. (Page 227)

Ordering Example



Straight Drill Chuck

ED Small Drilling

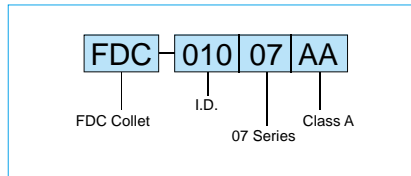
FDC Collet

Tool's shank	FDC- d07
φ 1.0 - 0.5	FDC-01007
φ 1.5 - 1.0	FDC-01507
φ 2.0 - 1.5	FDC-02007
φ 2.5 - 2.0	FDC-02507
φ 3.0 - 2.5	FDC-03007
φ 3.5 - 3.0	FDC-03507
φ 4.0 - 3.5	FDC-04007
φ 4.5 - 4.0	FDC-04507
φ 5.0 - 4.5	FDC-05007
φ 5.5 - 5.0	FDC-05507
φ 6.0 - 5.5	FDC-06007
φ 6.5 - 6.0	FDC-06507
φ 7.0 - 6.5	FDC-07007

Note

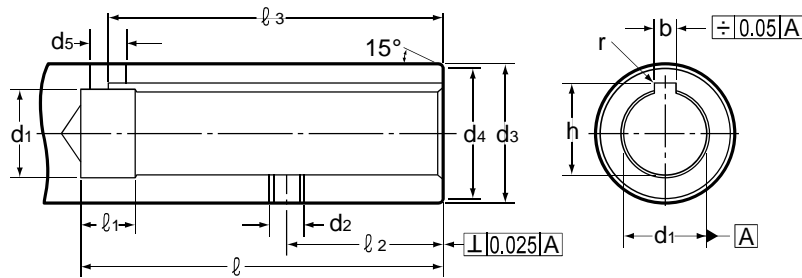
For higher accuracy, small φ collet is recommended.
 Example: For φ1.0 tool shank, both φ1.0 - 0.5 and φ1.5 - 1.0 collet are applicable.
 ⇒ φ1.0 - 0.5 collet is recommended for higher accuracy.

Ordering Example



Special Spindle Standard

(for FDC-07 series only)



Size	dH6	l (min)	d1	d2	d3g6	d4	d5	l1	l2±0.1	l3	b		h ^{+0.1} ₀
											Datum dimension	Tolerance	
10	10	41	10.6	M5	18	17.4	5	8	14	37	3	+0.12 +0.06	11
12	12	41	12.6	M5	20	19.2	5	8	14	37	3	+0.12 +0.06	13
16	16	46	16.6	M6	25	24	6	8	16	42	5	+0.145 +0.07	17.3

- The special spindle dimension shown above is different from DIN standard.
- All dimensions shown in millimeters.