

Quick Change Stub Tapper KTP

Application

- For special purpose machines, transfer machines etc.
- Spindle feed: Pitch feed.

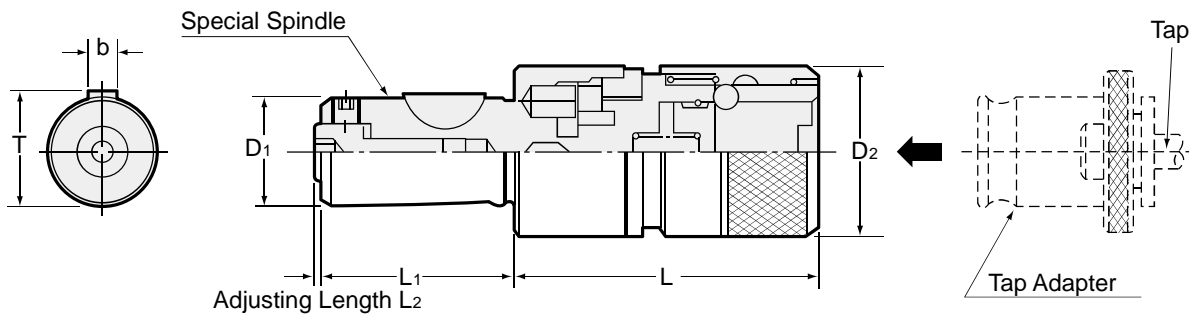
Feature

Short Shank Length and Short Projection Length

Simple Spindle Designing / Machining makes your machine compact.

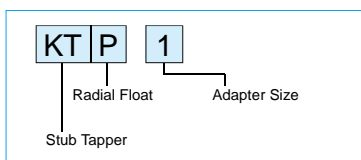
Radial Floating Feature compensations for any mis-alignment between tap and pre-drilled hole.

Quick Change Tap Adapter



Part Number	Tapping Capacity	Adapter Size	Radial Float	D1 _{h6}	D2	L	L1 _{±0.1}	T	b	L2	kg
KTP 0	M3 - M8 (M10) U ^{1/4} - U ^{5/16} (U ^{3/8})	0	0.25	16	23	54	31	17.1	5		0.2
KTP 1	M3 - M12 (M15) U ^{1/4} - U ^{7/16} (U ^{9/16}) Pipe 1/8 - 1/4	1	0.5	20	32	58	37	21.1			
KTP40	M6 - M18 U ^{1/4} - U ^{3/4}	40	0.75	28	40	78	49	29.5	6		0.8
KTP 2	M8 - M22 U ^{3/8} - U ^{7/8} Pipe 1/8 - 1/2	2	1		50	85					

Ordering Example



- All dimensions shown in millimeters.
- Tap sizes are based on JIS (old) standard.
Tap sizes in brackets are for light tapping only.

Quick Change Stub Tapper KTL

Application

- For special purpose machines, transfer machines etc.
- Spindle feed: All types. In case of machines without pitch feed, set the spindle feed less than the tap pitch.

Feature

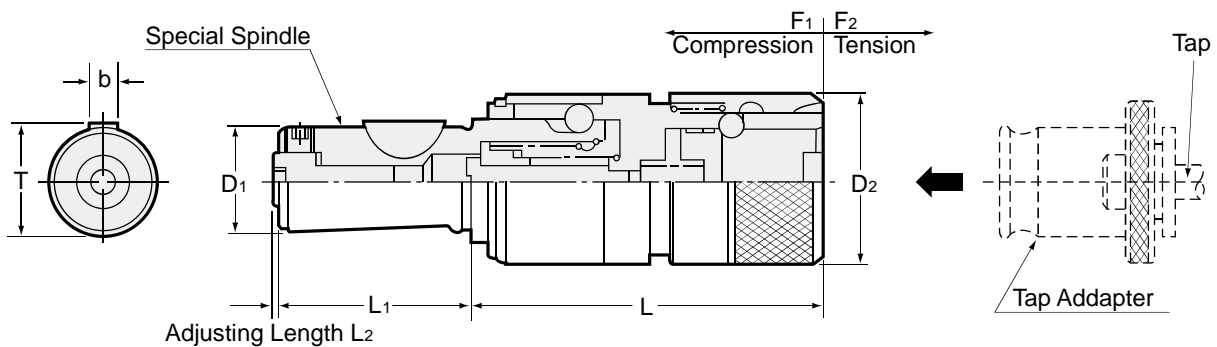
Short Shank Length and Short Projection Length

Simple Spindle Designing / Machining makes your machine compact.

Length Compensation Feature allows for machine feed discrepancies between spindle and tap.

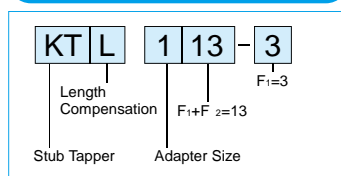
Quick Change Tap Adapter

* In case of alignment discrepancies between pre-drilled hole and tap, choose KTLP tapping chuck.



Part Number	Tapping Capacity	Adapter Size	Length Compensation		D ₁ h6	D ₂	L	L ₁ ± 0.1	T	b	L ₂	kg
			Comp.	Ext.								
KTL 013-3 010-0	M3 - M8 (M10) U ^{1/4} - U ^{5/16} (U ^{3/8})	0	3 0	10	16	23	65	31	17.1			0.2
KTL 113-3 110-0	M3 - M12 (M15) U ^{1/4} - U ^{7/16} (U ^{9/16}) Pipe ^{1/8} - ^{1/4}	1	3 0	10	20	32	70	37	21.1	5		0.4
KTL 4015-3 4012-0	M6 - M18 U ^{1/4} - U ^{3/4}	40	3 0	12		40	85				0 - 2	0.8
KTL 215-3 212-0	M8 - M22 U ^{3/8} - U ^{7/8} Pipe ^{1/8} - ^{1/2}	2	3 0	12	28			49	29.5	6		1.2

Ordering Example



- All dimensions shown in millimeters.
- Tap sizes are based on JIS (old) standard.
Tap sizes in brackets are for light tapping only.

Quick Change Stub Tapper KTL P

Application

- For special purpose machines, transfer machines etc.
- Spindle feed: All types. In case of machines without pitch feed, set the spindle feed less than the tap pitch.



Feature

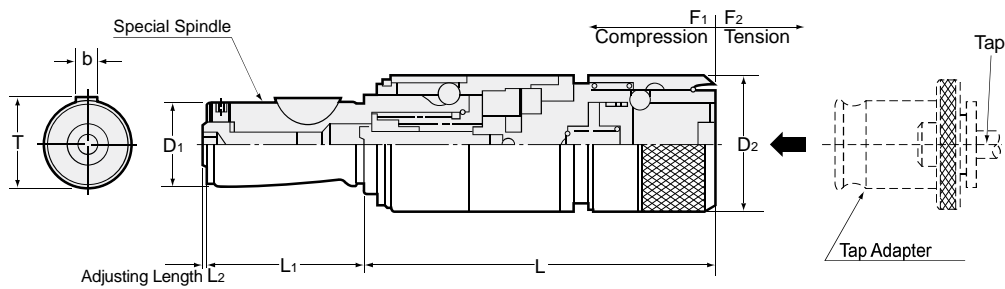
Short Shank Length and Short Projection Length

Simple spindle designing/machining makes your machine compact.

Length Compensation Feature allows for machine feed discrepancies between spindle and tap.

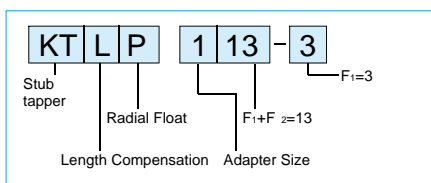
Radial Floating Feature compensations for any mis-alignment between tap and pre-drilled hole.

Quick change tap adapter



Part Number	Tapping Capacity	Adapter Size	Radial Float	Length		D ₁ h ₆	D ₂	L	L ₁ ± 0.1	T	b	L ₂	kg
				Comp.	Exp.								
KTLP 013-3 010-0	M3 - M8 (M10) U ^{1/4} - U ^{5/16} (U ^{3/8})	0	0.25	3 0	10	16	23	83	31	17.1			0.3
KTLP 113-3 110-0	M3 - M12 (M15) U ^{1/4} - U ^{7/16} (U ^{9/16}) Pipe 1/8 - 1/4	1	0.5	3 0	10	20	32	85	37	21.1	5		0.5
KTLP 4015-3 4012-0	M6 - M18 U ^{1/4} - U ^{3/4}	40	0.75	3 0			40	109				0-2	1.0
KTLP 215-3 212-0	M8 - M22 U ^{3/8} - U ^{7/8} Pipe 1/8 - 1/2	2	1	3 0	12		50	119	28	49	29.5	6	1.5

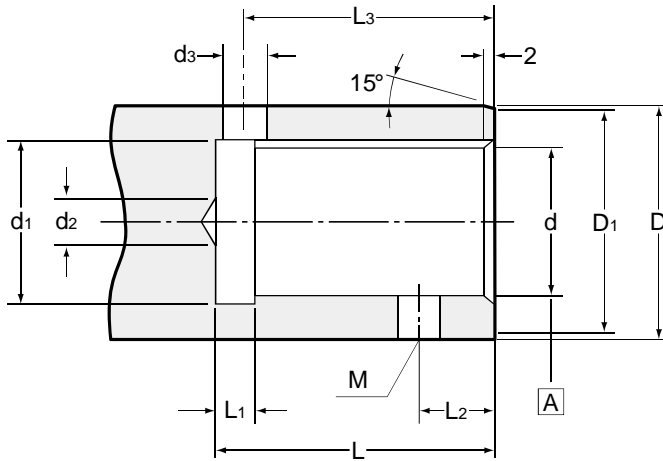
Ordering Example



- All dimensions shown in millimeters.
- Tap sizes are based on JIS (old) standard. Tap sizes in brackets are for light tapping only.

Quick Change Stub Tapper

Special Spindle Standard for **KTP, KTL** and **KTLP**



Nominal Size	d_{H6}	$L^{+0.5}_0$	d_1	d_2 (MAX)	D_{g6}	D_1	d_3	L_1	L_2	M	L_3	$b^{+0.145}_{+0.07}$	$h^{+0.1}_{+0}$	r
16	16	31	16.6	4	25	24	6	5	10	M6	27	5	17.3	0.2
20	20	37	20.6	6	32	31	6	5	10	M6	33	5	21.3	0.2
28	28	49	28.6	10	40	39	8	5	12	M8	44	6	29.7	0.4