

Quick Change Stub Holder KH - A

Application

- Stub drilling, reaming etc.
- For special purpose machines, transfer machines etc.

Features

Minimum Spindle Parts

- The finger collet assembly to connect the spindle and the stub holder is no longer necessary. This deletion leads to cost reduction and time saving during spindle production.

Easy-to-make Special Spindle

- The special spindle is easily produced. The tapped hole, eccentric hole and groove are no longer necessary.
- We designed both quick change functions and torque transmission functions outside the spindle.

Rigid against Thrust Load

The holder shank has no groove, so it will not expand regardless of the high thrust load on the stopper screw. Quick change operation is always smooth.

Short Holder Length

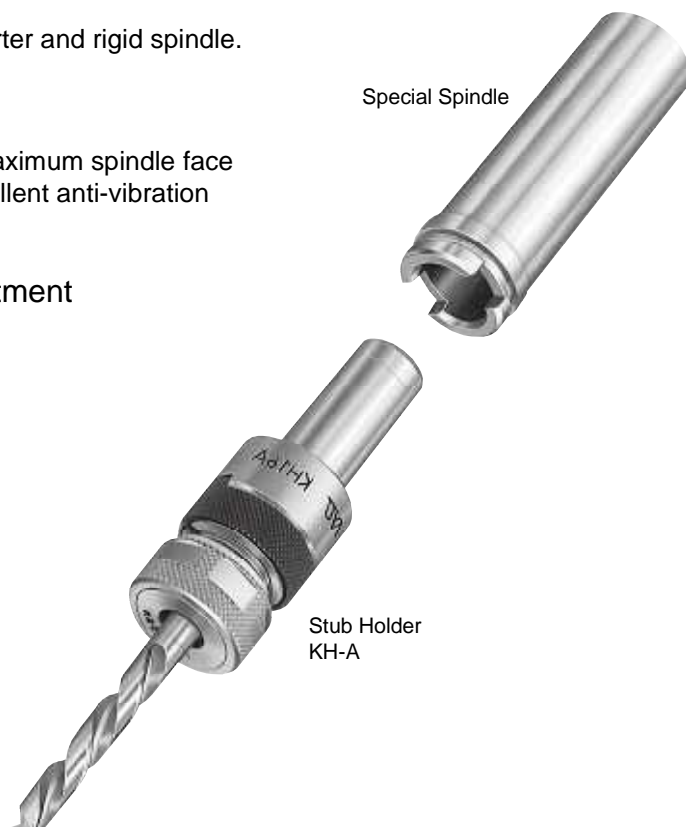
Special design and tolerances result in shorter and rigid spindle.

Excellent in Anti-Vibration

The axial play is reduced by maintaining maximum spindle face and holder face contact. This provides excellent anti-vibration conditions.

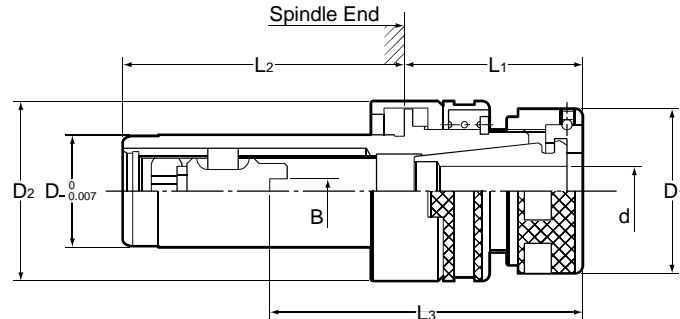
No Rust — Special Surface Treatment

- No rust under normal use condition. No deterioration of precision due to rust.
- Minimum maintenance required.



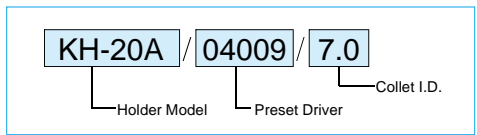
Quick Change Stub Holder KH - A

Holder Set — including nut, preset driver and collet.



Part Number	D	Collet I.D.	B	Preset Driver	L ₃	D ₁	D ₂	L ₁	L ₂	Collet	Nut	Spanner Wrench
KH -12AR	12	0.5 - 6.0	0	-00006	23 - 43	19	20	34	35	FDC-d07A	KDP-1414	Conventional Spanner
		3.1 - 5.0	2.4	KHS -02406	25 - 46							
		5.1 - 6.0	3.0	-03006								
KH -14AR	14	0.5 - 7.0	0	-00007	23 - 43	26	24.3	34	35	EDC-d19	KDP-1916	S-1L
		3.1 - 5.0	2.4	KHS -02407								
		5.1 - 6.0	3.0	-03007								
		6.1 - 7.0	4.0	-04007								
KH -16A	16	2.8 - 9.0	0	-00009	29 - 45	26	29	40	45	EDC-d19	KDP-1916	S-1L
		3.1 - 5.0	2.4	KHS -02409	32 - 49							
		5.1 - 6.0	3.0	-03009	34 - 51							
		6.1 - 9.0	4.0	-04009								
KH -19A	19	2.8 - 9.0	0	-00009	29 - 50	26	32	45	45	EDC-d19	KDP-1916	S-1L
		3.1 - 5.0	2.4	KHS -02409	32 - 54							
		5.1 - 6.0	3.0	-03009	34 - 56							
		6.1 - 9.0	4.0	-04009								
KH -20A	20	2.8 - 9.0	0	-00009	29 - 50	26	32	45	45	EDC-d19	KDP-1916	S-1L
		3.1 - 5.0	2.4	KHS -02409	32 - 54							
		5.1 - 6.0	3.0	-03009	34 - 56							
		6.1 - 9.0	4.0	-04009								
KH -22A	22	2.8 - 12	0	-00012	35 - 57	32	35	55	55	EDC-d24	KDP-2422	S-3L
		3.1 - 5.0	2.4	KHS -02412	33 - 60							
		5.1 - 6.0	3.0	-03012								
		9.1 - 12	5.0	-05012	37 - 64							
KH -24A	24	2.8 - 12	0	-00012	35 - 57	32	35	55	55	EDC-d24	KDP-2422	S-3L
		3.1 - 5.0	2.4	KHS -02412	33 - 60							
		5.1 - 6.0	3.0	-03012								
		6.1 - 9.0	4.0	-04012	37 - 64							
		9.1 - 12	5.0	-05012								
KH -25A	25	4.0 - 16	0	-00016	38 - 60 (65)	36	41	60	65	EDC-d28	KDP-2825	S-4L
		4.0 - 5.0	2.4	KHS -02416	36 - 58 (63)							
		5.1 - 6.0	3.0	-03016	39 - 58 (63)							
		6.1 - 9.0	4.0	-04016	42 - 64 (69)							
		9.1 - 12	5.0	-05016	47 - 69 (74)							
KH -26A	26	4.0 - 16	0	-00016	38 - 60 (65)	36	41	60	65	EDC-d28	KDP-2825	S-4L
		4.0 - 5.0	2.4	KHS -02416	36 - 58 (63)							
		5.1 - 6.0	3.0	-03016	39 - 58 (63)							
		6.1 - 9.0	4.0	-04016	42 - 64 (69)							
		9.1 - 12	5.0	-05016	47 - 69 (74)							
KH -28A	28	4.0 - 16	0	-00016	38 - 60 (65)	36	41	60	65	EDC-d28	KDP-2825	S-4L
		4.0 - 5.0	2.4	KHS -02416	36 - 58 (63)							
		5.1 - 6.0	3.0	-03016	39 - 58 (63)							
		6.1 - 9.0	4.0	-04016	42 - 64 (69)							
		9.1 - 12	5.0	-05016	47 - 69 (74)							
KH -30A	30	4.0 - 16	0	-00016	38 - 60 (65)	36	41	60	65	EDC-d28	KDP-2825	S-4L
		4.0 - 5.0	2.4	KHS -02416	36 - 58 (63)							
		5.1 - 6.0	3.0	-03016	39 - 58 (63)							
		6.1 - 9.0	4.0	-04016	42 - 64 (69)							
		9.1 - 12	5.0	-05016	47 - 69 (74)							
KH -32A	32	4.0 - 16	0	-00016	38 - 60 (65)	36	41	60	65	EDC-d28	KDP-2825	S-4L
		4.0 - 5.0	2.4	KHS -02416	36 - 58 (63)							
		5.1 - 6.0	3.0	-03016	39 - 58 (63)							
		6.1 - 9.0	4.0	-04016	42 - 64 (69)							
		9.1 - 12	5.0	-05016	47 - 69 (74)							
KH -35A	35	4.0 - 16	0	-00016	38 - 60 (65)	36	41	60	65	EDC-d28	KDP-2825	S-4L
		4.0 - 5.0	2.4	KHS -02416	36 - 58 (63)							
		5.1 - 6.0	3.0	-03016	39 - 58 (63)							
		6.1 - 9.0	4.0	-04016	42 - 64 (69)							
		9.1 - 12	5.0	-05016	47 - 69 (74)							
KH -36A	36	4.0 - 16	0	-00016	38 - 60 (65)	36	41	60	65	EDC-d28	KDP-2825	S-4L
		4.0 - 5.0	2.4	KHS -02416	36 - 58 (63)							
		5.1 - 6.0	3.0	-03016	39 - 58 (63)							
		6.1 - 9.0	4.0	-04016	42 - 64 (69)							
		9.1 - 12	5.0	-05016	47 - 69 (74)							
KH -48A	48	20.1 - 32	0	-00032	45 - 85	66	70	45	100	FDC-d32B	KDP-32	S-6
		20.1 - 22	8.0	KHS -08032	51 - 91							
		22.1 - 32	12.0	-12032	67 - 107							

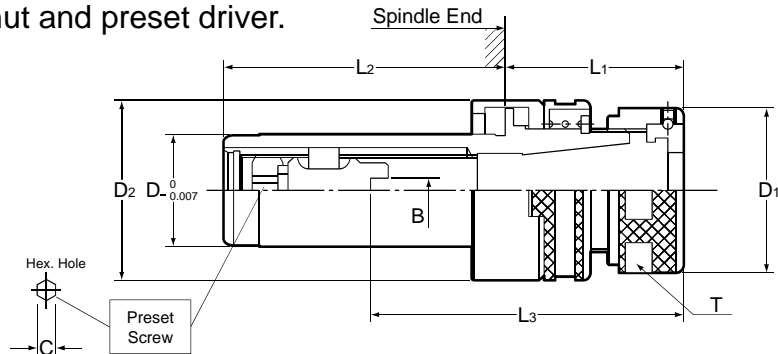
Ordering Example



- All dimensions shown in millimeters.
- L₃ in brackets show max. dimensions for the KH-28A and KH-30A models only.
- Spanner wrench is sold separately. (Page 228)

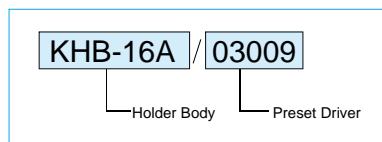
Quick Change Stub Holder KH - A

Holder Body — including nut and preset driver.



Part Number	D	D ₁	D ₂	B	L ₁	L ₂	L ₃	T	C	
KHB-12AR / 00006 / 02406 / 03006	12		-	-			23 - 43		3	
			20	2.4			25 - 46			
				3						
KHB-14AR / 00007 / 02407 / 03007 / 04007	14	19	24.3	-	34	35	23 - 43	17		
							2.4			25 - 46
							3			
							4			
KHB-16A / 00009 / 02409 / 03009 / 04009	16	26	29	-		40	29 - 45	24	4	
							2.4			32 - 49
							3			34 - 51
							4			
KHB-19A / -20A0 / 00009 / 02409 / 03009 / 04009	19	26	32	-		45	29 - 50	24		
							2.4			32 - 54
							3			34 - 56
							4			
KHB-22A / -24A / 00012 / 02412 / 03012 / 04012 / 05012	22	32	35	-	35	55	35 - 57	30	5	
							2.4			33 - 60
							3			
							4			37 - 64
							5			
KHB-25A / 26A / 28A / 30A / 00016 / 02416 / 03016 / 04016 / 05016 / 06016	25	36	41	-		60	38 - 60 (65)	33		
							2.4			36 - 58 (63)
							3			39 - 58 (63)
							4			42 - 64 (69)
							5			47 - 69 (74)
							6			50 - 72 (77)
KHB-32A / 35A / 36A / 00022 / 02422 / 03022 / 04022 / 05022 / 06022 / 08022	32	46	48	-	40	80	38 - 74	42	6	
							2.4			39 - 75
							3			42 - 78
							4			48 - 84
							5			
							6			54 - 87
							8			
KHB-48A / 00032 / 08032 / 12032	48	66	70	-	45	100	45 - 85			
							8			51 - 91
							12			67 - 107

Ordering Example



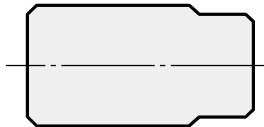
- All dimensions shown in millimeters.
- L₃ in brackets shows max. dimensions for the KHB-28A and KHB-30A models only.
- Collet and spanner wrench are sold separately. (Page 228)

Quick Change Stub Holder KH - A

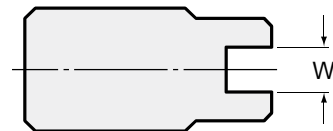
Preset Driver

KHS

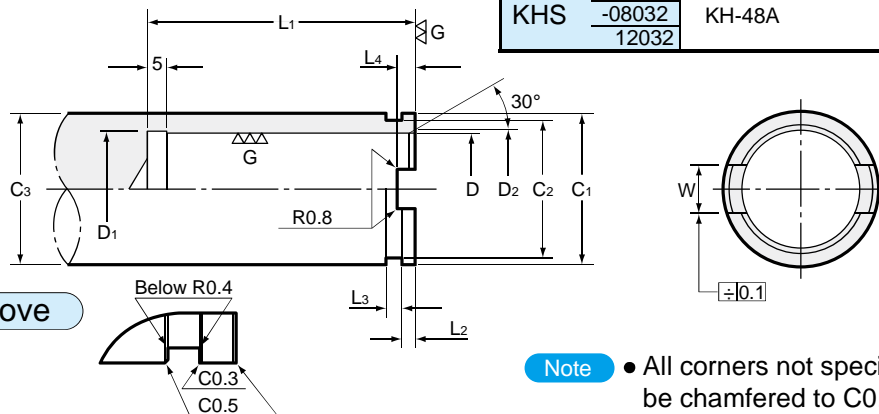
Type 1 (without tang)



Type 2 (with tang)



Spindle Standard for Model KH-A



Note • All corners not specified should be chamfered to C0.5.

The spindle dimensions shown below are for KH-A only. Other dimensions are model for KH available. Material for spindle face is SCM415. Heat treatment HV613-697. Carburized depth 0.4 - 0.6 mm.

Nominal Size	D +0.015 +0.005	D ₁	D ₂	C ₁ 0 -0.1	C ₂ 0 -0.1	C ₃	L ₁	L ₂ +0.1 0	L ₃	W C ₁₀	L ₄
12AR	12	12.4	13.5	18	16.5	18or more	38			6	3.5
14AR	14	14.4	15.5	22	20	20or more		2.5	2.5	8	
16A	16	16.4	17.5	26.4	24	25or more	43			9	
19A	19	19.4	20.5								
20A	20	20.4	21.5	29.4	27	28or more	48				
22A	22	22.4	23.5	32.4	30	32or more	58				
24A	24	24.4	25.5	34.4	32						
25A	25	25.4	26.5								
26A	26	26.4	27.5	37.4	35	35or more	63	3.5	3.0		4.5
28A	28	28.4	29.5	40.4	38	40or more	68			10	
30A	30	30.4	31.5								
32A	32	32.4	33.5	43.8	41						
35A	35	35.4	36.5			45or more	83				
36A	36	36.4	37.5	47.8	45						
48A	48	48.4	49.5	65.4	62	65or more	103	4.5	4.0	11	5.5

• All dimensions shown in millimeters.

Quick Change Stub Holder KH-A-NL

Stub Tapper KH-A-NL

Application

- KH-A-NL is used in place of KH-A for tapping applications.
- Spindle feed: All types. In case of machines without pitch feed, set the spindle feed less than tap pitch. (KH-A-NL's length adjustment should be retained less than half.)

Feature

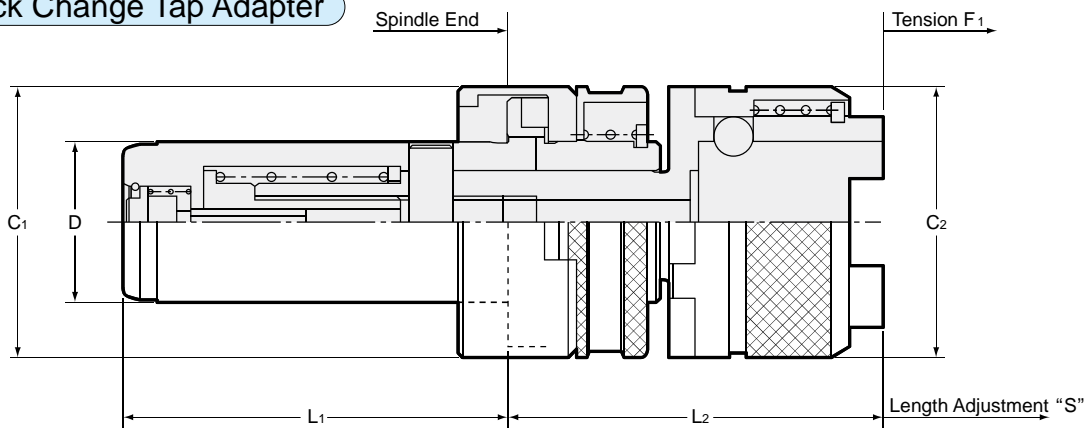
Short Gauge Length for stable tapping

No Rust — Special Surface Treatment

Gauge Length Adjustable

Axial Tension Mechanism

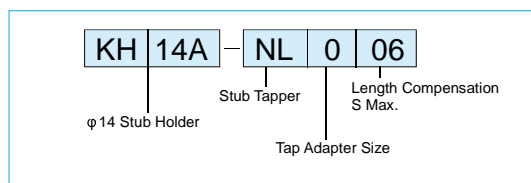
Quick Change Tap Adapter



Part Number	Tapping Capacity	Adapter Size	D	C ₁	C ₂	L ₁	L ₂	S MAX	F ₁
KH14A-NL006	M3-M8 (M10) U1/4-U5/16 (U3/8)	0	14	24.3	23	35	50+S	6	6-S
KH16A-NL008			16	29		40	47+S	8	8-S
KH19A-NL110	M3-M12 (M15) U1/4-U7/16 (U9/16) P1/8-P1/4	1	19	32	32	45	45+S	10	10-S
KH20A-NL110			20			35			
KH22A-NL110			22	37		15		15-S	
KH24A-NL110			24	41					
KH25A-NL115			25	60					
KH26A-NL115	26	44	50	60+S	15	15-S			
KH28A-NL215	28	48							
KH30A-NL215	30	52			20	20-S			
KH32A-NL220	32	52							
KH35A-NL220	35	72	100	90+S	20	20-S			
KH36A-NL220	36	72							
KH48A-NL320	M16-M38	3	48	70	72	100	90+S	20	20-S

• All dimensions shown in millimeters.

Ordering Example



How to adjust the gauge length

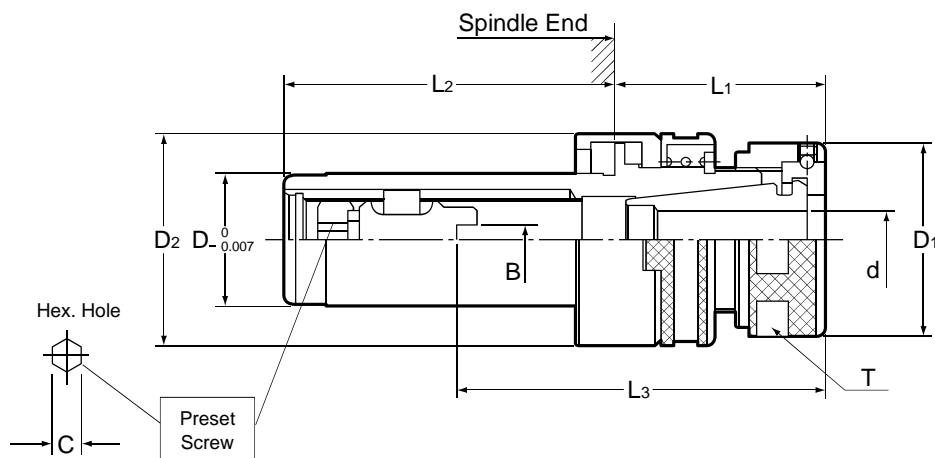
The gauge length can be adjusted by simply turning the adjusting screw. The max. adjustable length is shown as S max.

Quick Change Stub Holder KH

Feature

- KH is exactly the same as KH-A except for outside diameters.
- KH stub holder is recommended for light drilling on aluminum or cast iron.
- ⚠ Please contact us before using $\phi 12$ or bigger drill.

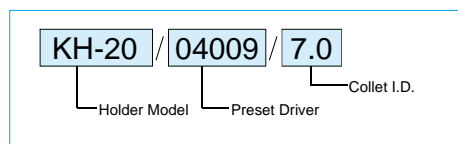
Holder Set — including nut, preset driver and collet.



Model	D	Collet I.D.	B	Preset Driver	L ₃	D ₁	D ₂	L ₁	L ₂	T	C	Collet	Spanner Wrench	
KH -14R	14	0.5 - 7.0	0	-00007	23 - 43	19	22	34	35	17	3	FDC-d07A	Conventional spanner	
		3.1 - 5.0	2.4	KHS -02407										
		5.1 - 6.0	3.0	-03007										
		6.1 - 7.0	4.0	-04007										
KH -16	16	2.8 - 9.0	0	-00009	29 - 50	26	26	40	24	4	EDC-d19	S-1L		
		3.1 - 5.0	2.4	KHS -02409										
		5.1 - 6.0	3.0	-03009										
		6.1 - 9.0	4.0	-04009										
KH -19	19	2.8 - 9.0	0	-00009	29 - 50	26	30	35	45	24	4	EDC-d19	S-1L	
		3.1 - 5.0	2.4	KHS -02409										
	20	5.1 - 6.0	3.0	-03009	34 - 56									50
		6.1 - 9.0	4.0	-04009										
KH -22	22	2.8 - 12	0	-00012	35 - 57	33	32	55	30	5	EDC-d24	S-3L		
		3.1 - 5.0	2.4	KHS -02412										
	24	5.1 - 6.0	3.0	-03012	37 - 64									
		6.1 - 9.0	4.0	-04012										
		9.1 - 12	5.0	-05012										

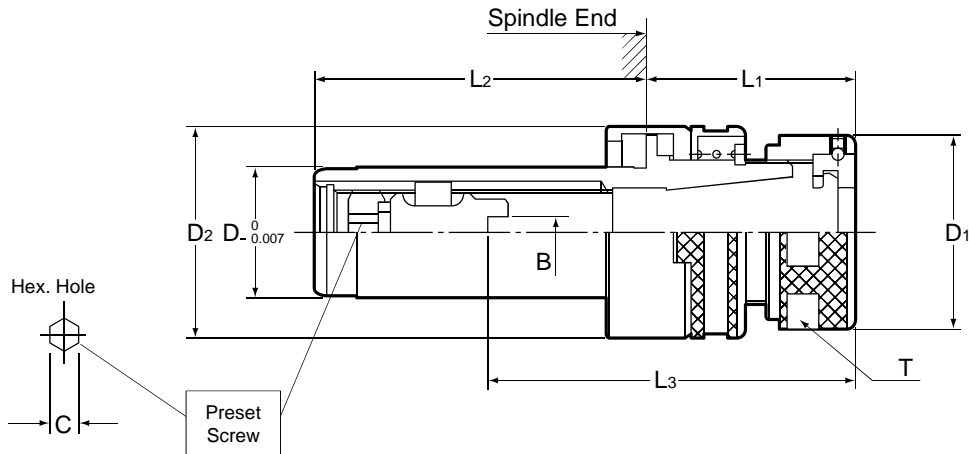
- All dimensions shown in millimeters.
- Spanner wrench is sold separately. (Page 228)

Ordering Example



Quick Change Stub Holder KH

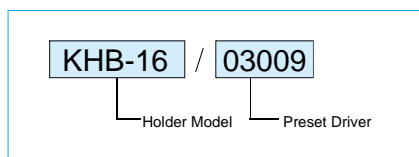
Holder Body — including nut and preset driver.



Part Number	D	D ₁	D ₂	B	L ₁	L ₂	L ₃	T	C
KHB -14R	14	19	22	0	34	35	23 - 43	17	3
				2.4			25 - 46		
				3.0					
				4.0					
KHB -16	16	26	26	0	40	40	29 - 45	24	4
				2.4			32 - 49		
				3.0					
				4.0					
KHB -19	19	26	30	0	35	45	29 - 50	24	4
				2.4			32 - 54		
				3.0					
				4.0					
KHB -20	20	26	30	0	35	50	29 - 50	24	4
				2.4			32 - 54		
				3.0					
				4.0					
KHB -22	22	32	33	0	55	55	35 - 57	30	5
				2.4			33 - 60		
				3.0					
				4.0					
KHB -24	24	32	35	0	55	55	35 - 57	30	5
				2.4			33 - 60		
				3.0					
				4.0			37 - 64		
				5.0					

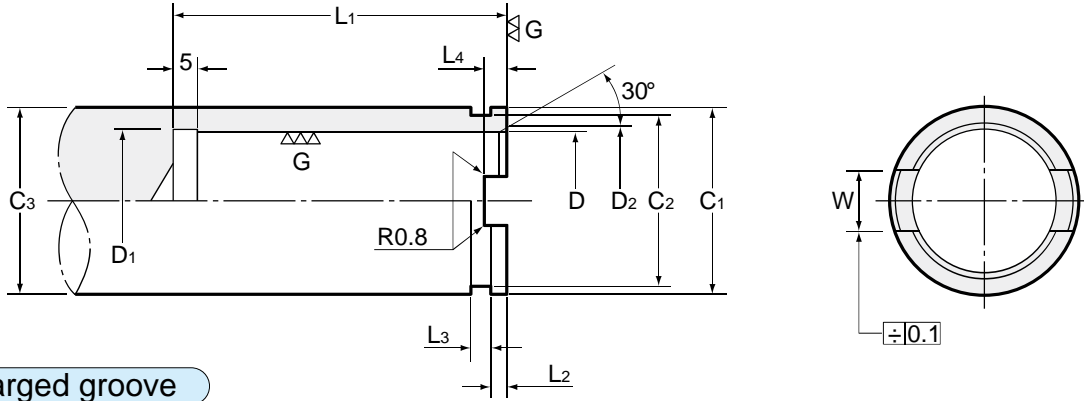
- All dimensions shown in millimeters.
- Collet and spanner wrench are sold separately. (Page 228)

Ordering Example

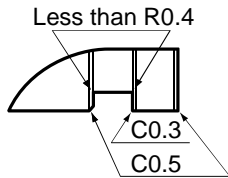


Quick Change Stub Holder

Spindle Standard for KH



Enlarged groove



- All sharp corners not specified should be chamfered to C0.5.
- The material of the spindle face is SCM415. Heat treatment HV613-697. Carburized depth 0.4 - 0.6mm.

Note The spindle dimensions shown below are for KH only. Other dimensions are available for Model KH-A.

Nominal Size	D $+0.015$ $+0.005$	D ₁	D ₂	C ₁ 0 -0.1	C ₂ 0 -0.1	C ₃	L ₁	L ₂ $+0.1$ 0	L ₃	W C10	L ₄
14	14	14.4	15.5	19.8	18	Over 20	38	2.5	2.5	8	3.5
16	16	16.4	17.5	23.8	21.4	Over 25	43				
19	19	19.4	20.5	27.8	25.4	Over 28	48			9	4.5
20	20	20.4	21.5	30.3	27.9	Over 32	53	3.5	3.0		
22	22	22.4	23.5	30.3	29.9	Over 35	58			10	
24	24	24.4	25.5	30.3	29.9	Over 35					

- All dimensions shown in millimeters.