

Quick Change Stub Tapper KTP

Designed with shortest shank and projection length available.

Application

For special purpose machines, transfer machines etc.
Spindle feed: Pitch feed.



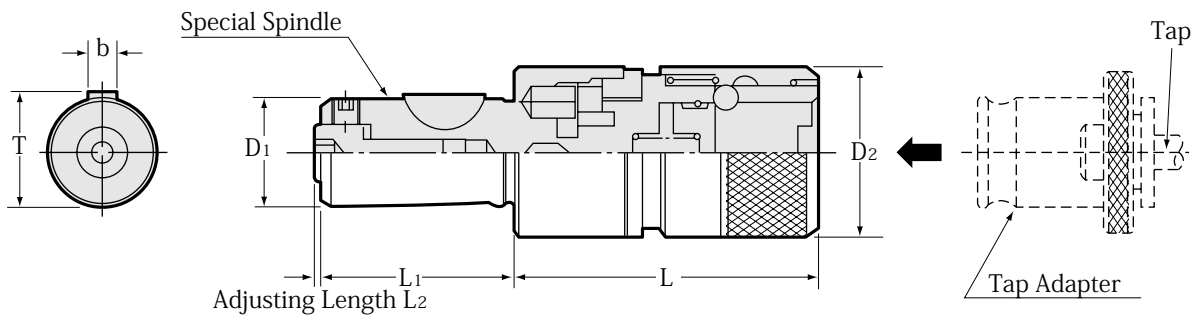
Feature

Short Shank Length and Short Projection Length

Simple spindle designing/machining makes your machine compact.

Radial Floating Feature compensations for any mis-alignment between tap and pre-drilled hole.

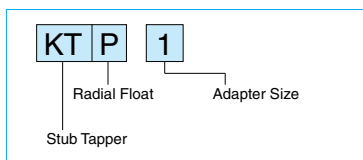
Quick change tap adapter



| Part Number | Tapping Capacity | Adapter Size | Radial Float | D1 h6 | D2 | L | L1 ±0.1 | T | b | L2 | kg |
|-------------|--|--------------|--------------|----------|----|----|------------|------|---|-----|-----|
| KTP 0 | M3~M8(M10) U ¹ / ₄ ~U ⁵ / ₁₆ (U ³ / ₈) | 0 | 0.25 | 16 | 23 | 54 | 31 | 17.1 | | | 0.2 |
| KTP 1 | M3~M12(M15) U ¹ / ₄ ~U ⁷ / ₁₆ (U ⁹ / ₁₆) Pipe ¹ / ₈ ~ ¹ / ₄ | 1 | 0.5 | 20 | 32 | 58 | 37 | 21.1 | 5 | | 0.4 |
| KTP40 | M6~M18 U ¹ / ₄ ~U ³ / ₄ | 40 | 0.75 | | 40 | 78 | | | | 0~2 | 0.8 |
| KTP 2 | M8~M22 U ³ / ₈ ~U ⁷ / ₈ Pipe ¹ / ₈ ~ ¹ / ₂ | 2 | 1 | 28 | | | 49 | 29.5 | 6 | | 1.1 |

All dimensions shown in millimeters.

Ordering Example



1. Tap sizes are based on JIS (old) standard.
2. Tap sizes in brackets are for light tapping only.

Quick Change Stub Tapper KTL

Shortest shank and projection length available.

Application

For special purpose machines, transfer machines etc.
Spindle feed: All types. In case of machines without pitch feed, set the spindle feed less than the tap pitch.



Feature

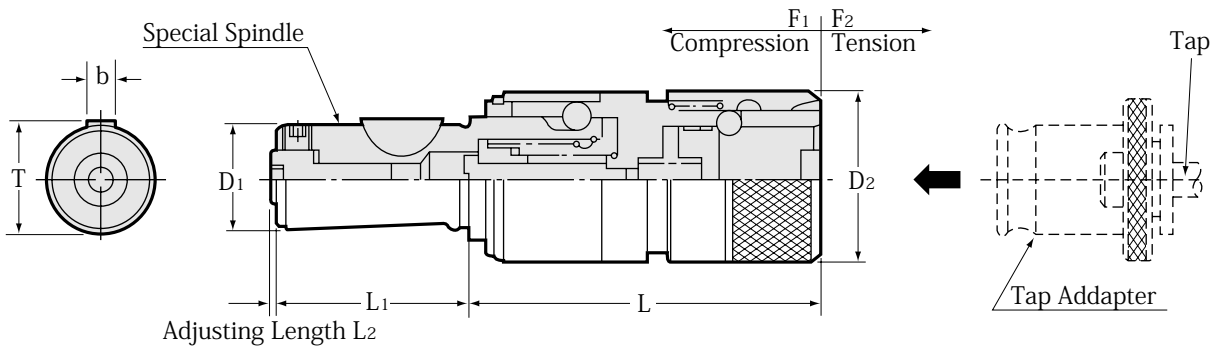
Short Shank Length and Short Projection Length

Simple spindle designing/machining makes your machine compact.

Length Compensation Feature allows for machine feed discrepancies between spindle and tap.

Quick change tap adapter

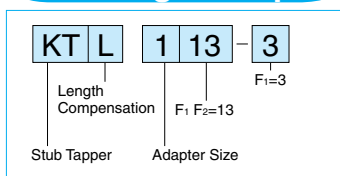
In case of alignment discrepancies between pre-drilled hole and tap, choose KTL P tapping chuck.



| Part Number | Tapping Capacity | Adapter Size | Length Compensation | | D1 h6 | D2 | L | L1 ±0.1 | T | b | L2 | kg |
|----------------------|--|--------------|---------------------|------|----------|----|----|------------|------|---|-----|-----|
| | | | Comp. | Ext. | | | | | | | | |
| KTL 013-3 010-0 | M3~M8(M10) U $\frac{1}{4}$ ~U $\frac{5}{16}$ (U $\frac{3}{8}$) | 0 | 3 0 | 10 | 16 | 23 | 65 | 31 | 17.1 | | | 0.2 |
| KTL 113-3 110-0 | M3~M12(M15) U $\frac{1}{4}$ ~U $\frac{7}{16}$ (U $\frac{9}{16}$) Pipe $\frac{1}{8}$ ~ $\frac{1}{4}$ | 1 | 3 0 | 10 | 20 | 32 | 70 | 37 | 21.1 | 5 | | 0.4 |
| KTL 4015-3 4012-0 | M6~M18 U $\frac{1}{4}$ ~U $\frac{3}{4}$ | 40 | 3 0 | 12 | | 40 | 85 | | | | 0~2 | 0.8 |
| KTL 215-3 212-0 | M8~M22 U $\frac{3}{8}$ ~U $\frac{7}{8}$ Pipe $\frac{1}{8}$ ~ $\frac{1}{2}$ | 2 | 3 0 | 12 | 28 | | | 49 | 29.5 | 6 | | 1.2 |

All dimensions shown in millimeters.

Ordering Example



1. Tap sizes are based on JIS (old) standard.
2. Tap sizes in brackets are for light tapping only.

Quick Change Stub Tapper K T L P

Shortest shank and projection length available.

Application

For special purpose machines, transfer machines etc.
Spindle feed: All types. In case of machines without pitch feed, set the spindle feed less than the tap pitch.



Feature

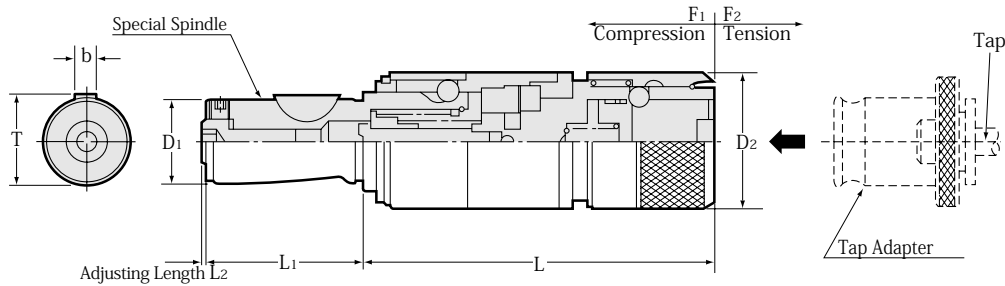
Short Shank Length and Short Projection Length

Simple spindle designing/machining makes your machine compact.

Length Compensation Feature allows for machine feed discrepancies between spindle and tap.

Radial Floating Feature compensations for any mis-alignment between tap and pre-drilled hole.

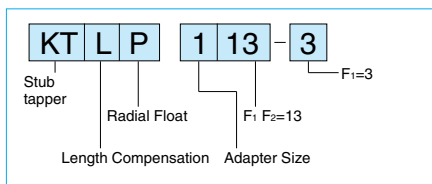
Quick change tap adapter



| Part Number | Tapping Capacity | Adapter Size | Radial Float | Length | | D ₁ h ₆ | D ₂ | L | L ₁ ±0.1 | T | b | L ₂ | kg |
|-----------------------|---|--------------|--------------|--------|------|----------------------------------|----------------|-----|------------------------|------|-----|----------------|-----|
| | | | | Comp. | Exp. | | | | | | | | |
| KTLP 013-3 010-0 | M3~M8(M10) U ¹ / ₄ ~ U ⁵ / ₁₆ (U ³ / ₈) | 0 | 0.25 | 3 | 10 | 16 | 23 | 83 | 31 | 17.1 | 5 | — | 0.3 |
| | | | | 0 | — | — | — | — | — | | | | |
| KTLP 113-3 110-0 | M3~M12(M15) U ¹ / ₄ ~ U ⁷ / ₁₆ (U ⁹ / ₁₆) Pipe ¹ / ₈ ~ ¹ / ₄ | 1 | 0.5 | 3 | 10 | 20 | 32 | 85 | 37 | 21.1 | 0~2 | — | 0.5 |
| | | | | 0 | — | — | — | — | — | | | | |
| KTLP 4015-3 4012-0 | M6~M18 U ¹ / ₄ ~ U ³ / ₄ | 40 | 0.75 | 3 | 12 | 28 | 40 | 109 | 49 | 29.5 | 6 | — | 1.0 |
| | | | | 0 | — | | — | — | | | | | |
| KTLP 215-3 212-0 | M8~M22 U ³ / ₈ ~ U ⁷ / ₈ Pipe ¹ / ₈ ~ ¹ / ₂ | 2 | 1 | 3 | 12 | 50 | 50 | 119 | — | — | — | — | 1.5 |
| | | | | 0 | — | | — | — | | | | | |

All dimensions shown in millimeters.

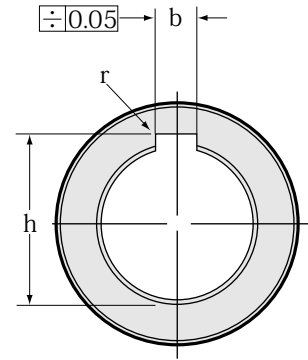
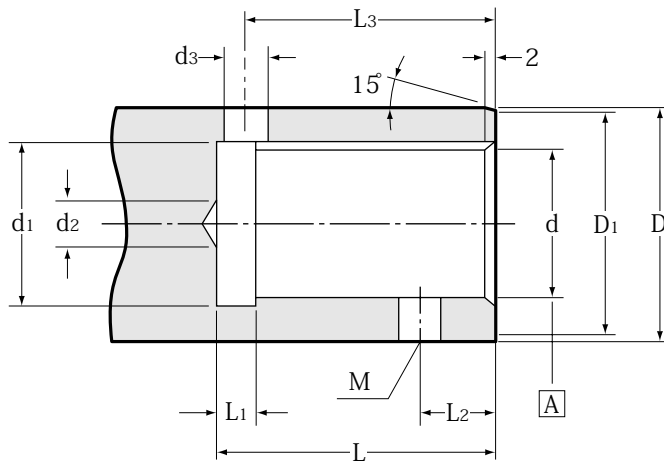
Ordering Example



1. Tap sizes are based on JIS (old) standard.
2. Tap sizes in brackets are for light tapping only.

Quick Change Stub Tapper

Special Spindle Standard for **KTP, KTL** and **KTLP**



| Nominal Size | d_{H6} | $L^{+0.5}_0$ | d_1 | d_2 (MAX) | D_{g6} | D_1 | d_3 | L_1 | L_2 | M | L_3 | $b^{+0.145}_{+0.07}$ | $h^{+0.1}_{+0}$ | r |
|--------------|----------|--------------|-------|----------------|----------|-------|-------|-------|-------|-----|-------|----------------------|-----------------|-----|
| 16 | 16 | 31 | 16.6 | 4 | 25 | 24 | 6 | 5 | 10 | M6 | 27 | 5 | 17.3 | 0.2 |
| 20 | 20 | 37 | 20.6 | 6 | 32 | 31 | 6 | 5 | 10 | M6 | 33 | 5 | 21.3 | 0.2 |
| 28 | 28 | 49 | 28.6 | 10 | 40 | 39 | 8 | 5 | 12 | M8 | 44 | 6 | 29.7 | 0.4 |