

Floating Reamer Holder

For straight shank reamer FH Series

We have designed the world's top accuracy into a compact body.

Top quality floating reamer holders are available in Tr. Shank, Straight Shank and Morse Taper shank

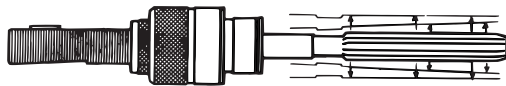
Application

Special purpose machines
Transfer machines
Machining centers

Feature

Top Quality Floating Mechanism

Radial float and angular float mechanisms compensate for any mis-



Radial & parallel float

+

Angular float

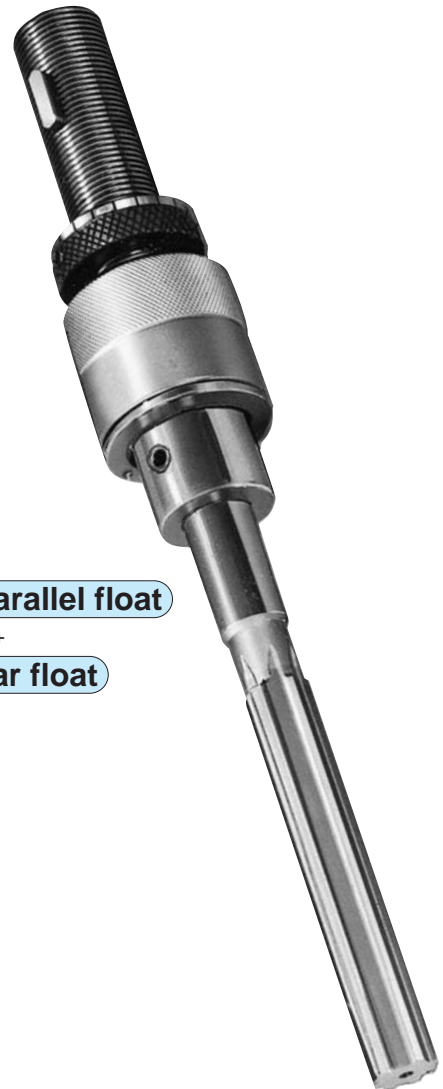
Both Horizontal and Vertical Spindles possible

The built-in locking function prevents the reamer from sagging on horizontal spindles.

No Rust

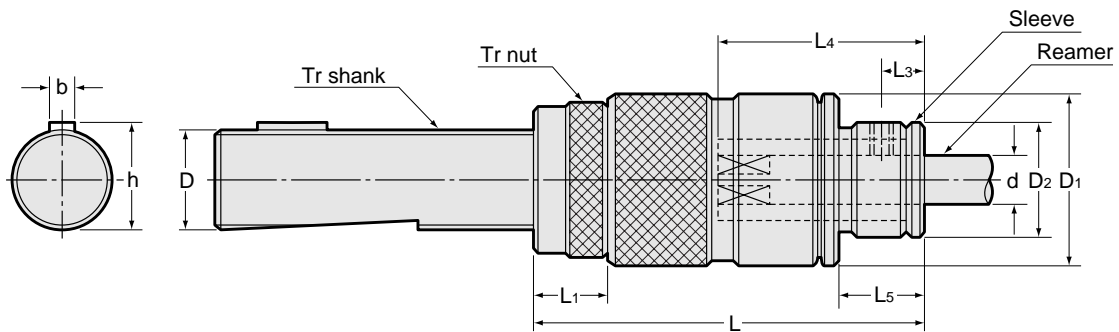
Special Surface

No rust under normal use conditions.
No deterioration of precision due to rust.



Floating Reamer Holder

For straight shank reamer FH-Tr

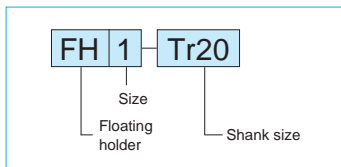


Part Number	d Reamer shank	Sleeve size	Float		D	b	h	D ₁	L	L ₁	L ₃	L ₅	D ₂	
			Radial	Angular										
FH 0 -	Tr16	3.00 ~ 8.00	FHS0	0.4	1°	16	5	17.2	28	62 ~ 80	12	7	15	19.5
	Tr16T					16	3	17.3						
	Tr16N					16	4	17.5						
	Tr19					19	5	21.1						
	Tr20					20	5	21.2						
FH 1 -	Tr16	4.00 ~ 10.00	FHS1	0 ~ 0.4	0 ~ 1° (Adjustable)	16	5	17.2	36	69 ~ 87	12	8	19	23
	Tr16T					16	3	17.3						
	Tr16N					16	4	17.5						
	Tr19					19	5	21.1						
	Tr20					20	5	21.2						
	Tr22					22	5	24.1						
	Tr24					24	5	26.1						
	Tr25					25	6	26.5						
FH 2 -	Tr26T	8.10 ~ 20.00	FHS2	0 ~ 0.6	0 ~ 1° (Adjustable)	26	5	28.1	55	87 ~ 110	12	14	25	38
	Tr26N					26	7	28.6						
	Tr28					28	6	29.5						
	Tr30					30	7	33.1						
	Tr32					32	8	33.5						
	Tr35					35	7	38.1						
	Tr36					36	8	37.5						
	Tr36N					36	10	39.6						

Ordering Example

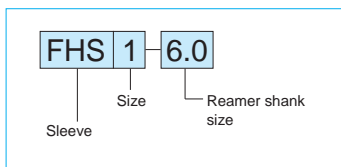
...Holder

All dimensions shown in



Ordering Example

...Sleeve



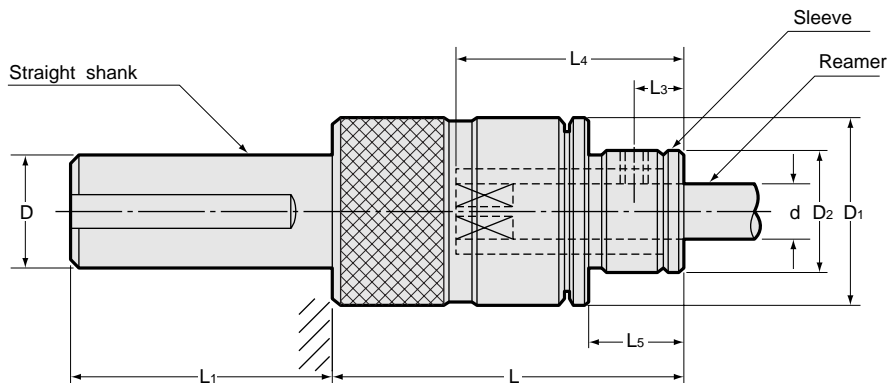
Choose a sleeve to fit the reamer shank

L₄ dimension

Part Number	d (Reamer shank)	L ₄
FH0 FH1	3.00 ~ 3.79	23
	3.80 ~ 4.79	26
	4.80 ~ 5.49	30
	5.50 ~ 10.00	35
FH2	8.10 ~ 10.79	42
	10.80 ~ 12.09	50
	12.10 ~ 20.00	55

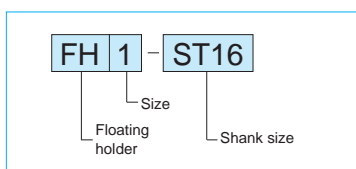
Floating Reamer Holder

For straight shank reamer FH-ST

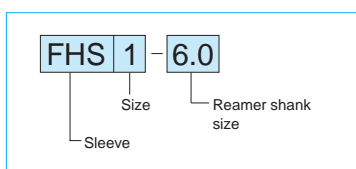


Part Number	d Reamer shank	Sleeve size	Float		D	D ₁	L	L ₁	L ₃	L ₅	D ₂	
			Radial	Angular								
FH 0-	ST15.875	3.00 ~ 8.00	FHS0	0.4	1°	15.875	28	50	50	7	15	19.5
	ST16					16						
	ST19.05					19.05						
	ST20					20						
FH 1-	ST15.875	4.00 ~ 10.00	FHS1	0 ~ 0.4	0 ~ 1° (Adjustable)	15.875	36	54	50	8	19	23
	ST16					16						
	ST19.05					19.05						
	ST20					20						
	ST25					25						
	ST25.4					25.4						
FH 2-	ST25	8.10 ~ 20.00	FHS2	0 ~ 0.6	0 ~ 1° (Adjustable)	25	55	75	50	14	25	38
	ST25.4					25.4						
	ST32					32						
	ST35					35						
	ST38.1					38.1						
	ST40					40						

Ordering Example ...Holder



Ordering Example ...Sleeve



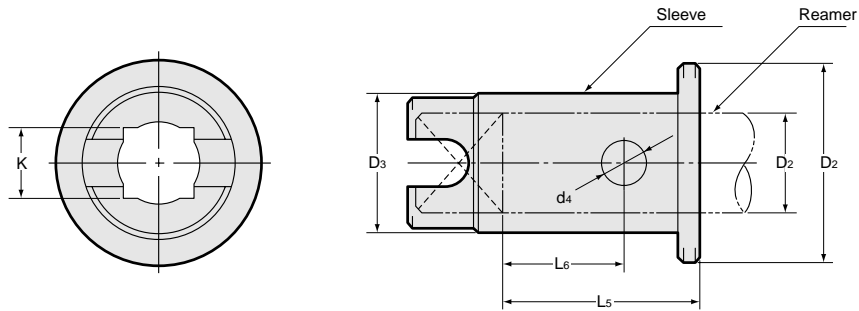
Select a sleeve to fit the reamer shank.

L₄ dimension

Part Number	d (Reamer shank)	L ₄
FH0 FH1	3.00 ~ 3.79	23
	3.80 ~ 4.79	26
	4.80 ~ 5.49	30
	5.50 ~ 10.00	35
FH2	8.10 ~ 10.79	42
	10.80 ~ 12.09	50
	12.10 ~ 20.00	55

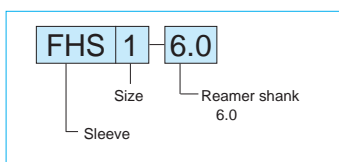
Floating Reamer Holder

For straight shank reamer
Sleeve



Part Number	d		K _{C11}	Holder size	L ₅	L ₆	D ₂	D ₃	d ₄
	Reamer shank (Exceeding)	(Below)							
FHS0 - d	2.99	3.35	2.5	FH0-	18	11	19.5	11	5
	3.35	3.78	2.8		17	10			
	3.78	4.30	3.2		20	13			
	4.30	4.70	3.5		20	13			
	4.70	5.40	4.0		23	16			
	5.40	6.00	4.5		28	21			
	6.00	6.70	5.0		27	20			
	6.70	7.30	5.5		27	20			
FHS1 - d	3.99	4.30	3.2	FH1-	20	12	23	13	6
	4.30	4.70	3.5		20	12			
	4.70	5.40	4.0		23	15			
	5.40	6.00	4.5		28	20			
	6.00	6.70	5.0		27	19			
	6.70	7.30	5.5		27	19			
	7.30	8.00	6.0		26	18			
	8.00	8.60	6.5		26	18			
	8.60	9.50	7.0		25	17			
	9.50	10.00	8.0		24	16			
FHS2 - d	8.09	8.60	6.5	FH2-	33	19	38	26	7
	8.60	9.50	7.0		32	18			
	9.50	10.70	8.0		31	17			
	10.70	12.00	9.0		38	24			
	12.00	13.50	10.0		42	28			
	13.50	14.70	11.0		41	27			
	14.70	16.00	12.0		40	26			
	16.00	17.20	13.0		39	25			
	17.20	18.70	14.0		38	24			
	18.70	20.00	15.0		37	23			

Ordering Example



All dimensions shown in