

Floating Reamer Holder

For straight shank reamer FH Series

We have designed the world's top accuracy into a compact body.

Top quality floating reamer holders are available in Tr. shank, straight shank and morse taper shank.

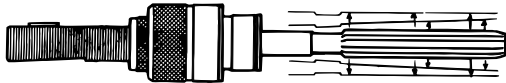
Application

- Special purpose machines
- Transfer machines
- Machining centers
- Drilling machines, etc.

Feature

Top Quality Floating Mechanism

- Radial float and angular float mechanisms compensate for any mis-alignment between the reamer and pre-drilled hole.



Radial & parallel float

+

Angular float

Both Horizontal and Vertical Spindles Possible

- The built-in locking function prevents the reamer from sagging on horizontal spindles.

No Rust

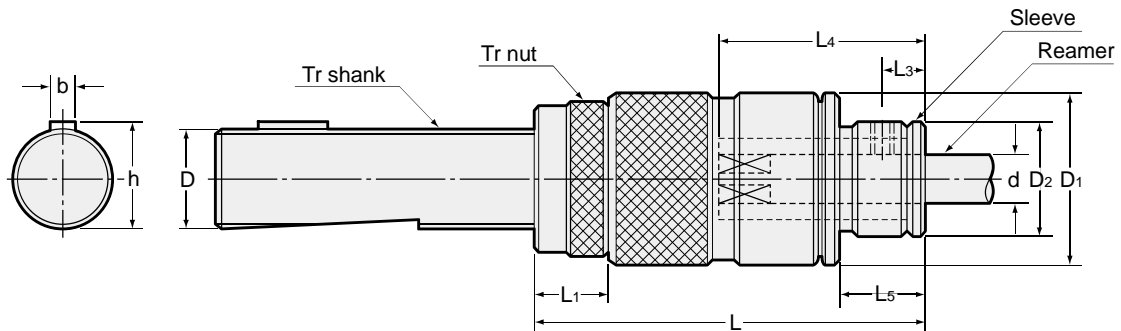
—Special Surface Treatment

- No rust under normal use conditions.
No deterioration of precision due to rust.
Minimum maintenance required.



Floating Reamer Holder

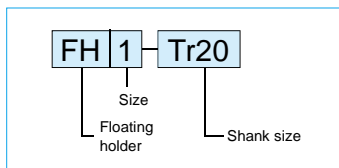
For straight shank reamer FH-Tr



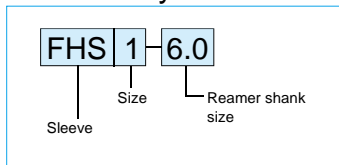
Part Number	d Reamer shank	Sleeve size	Float		D	b	h	D ₁	L	L ₁	L ₃	L ₅	D ₂	
			Radial	Angular										
FH0-	Tr16	3.00 - 8.00	FHS0	0.4	1°	16	5	17.2	62 - 80	12	7	15	19.5	
	Tr16T					16	3	17.3						
	Tr16N					16	4	17.5						
	Tr19					19	5	21.1						
	Tr20					20	5	21.2						
FH1-	Tr16	4.00 - 10.00	FHS1	0 - 0.4	0 - 1° (Adjustable)	16	5	17.2	69 - 87	12	8	19	23	
	Tr16T					16	3	17.3						
	Tr16N					16	4	17.5						
	Tr19					19	5	21.1	36					66 - 79
	Tr20					20	5	21.2						
	Tr22					22	5	24.1	66 - 84					
	Tr24					24	5	26.1	66 - 94					
Tr25	25	6	26.5	66 - 84										
FH2-	Tr26T	8.10 - 20.00	FHS2	0 - 0.6	0 - 1° (Adjustable)	26	5	28.1	87 - 110	14	25	38		
	Tr26N					26	7	28.6						
	Tr28					28	6	29.5	87 - 118					
	Tr30					30	7	33.1	55				89 - 118	
	Tr32					32	8	33.5						
	Tr35					35	7	38.1	89 - 125					
	Tr36					36	8	37.5	89 - 127					
	Tr36N					36	10	39.6						

Ordering Example

Holder



Sleeve only



* Please select a sleeve to fit the reamer shank.

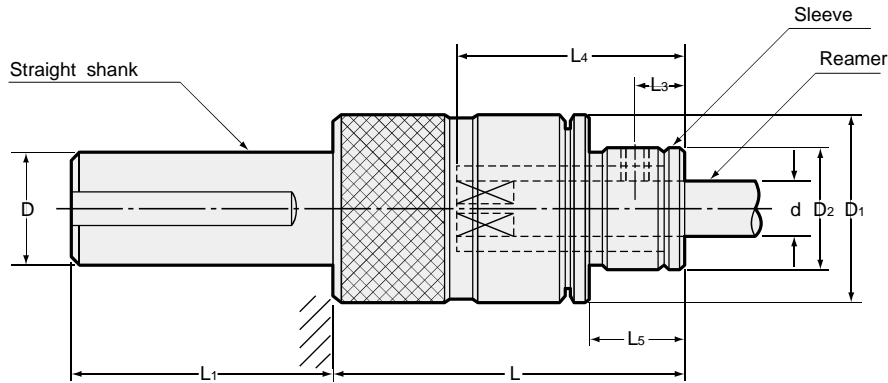
• All dimensions shown in millimeters.

L₄ dimension

Part Number	d (Reamer shank)	L ₄
FH0 FH1	3.00 - 3.79	23
	3.80 - 4.79	26
	4.80 - 5.49	30
	5.50 - 10.00	35
FH2	8.10 - 10.79	42
	10.80 - 12.09	50
	12.10 - 20.00	55

Floating Reamer Holder

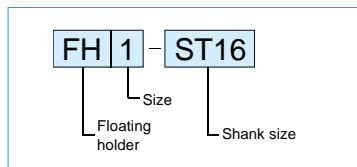
For straight shank reamer FH-ST



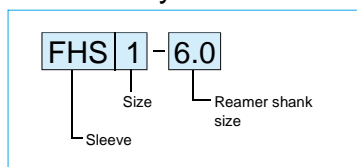
Part Number	d Reamer shank	Sleeve size	Float		D	D ₁	L	L ₁	L ₃	L ₅	D ₂	
			Radial	Angular								
FH0-	ST15.875	3.00 - 8.00	FHS0	0.4	1°	15.875	28	50	50	7	15	19.5
	ST16					16						
	ST19.05					19.05						
	ST20					20						
FH1-	ST15.875	4.00 - 10.00	FHS1	0 - 0.4	0 - 1° (Adjustable)	15.875	36	54	50	8	19	23
	ST16					16						
	ST19.05					19.05						
	ST20					20						
	ST25					25						
	ST25.4					25.4						
FH2-	ST25	8.10 - 20.00	FHS2	0 - 0.6	0 - 1° (Adjustable)	25	55	75	50	14	25	38
	ST25.4					25.4						
	ST32					32						
	ST35					35						
	ST38.1					38.1						
	ST40					40						

Ordering Example

Holder



Sleeve only



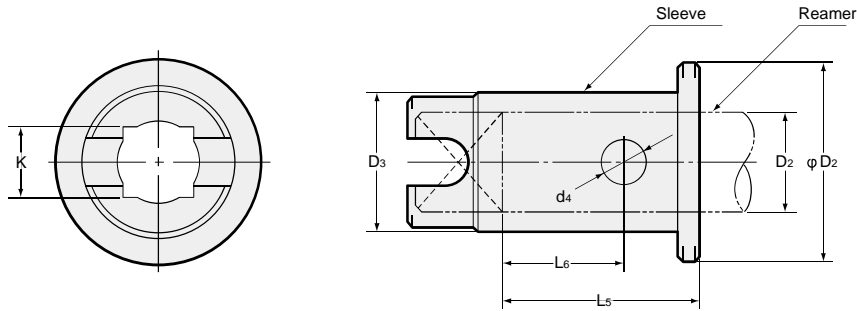
* Please select a sleeve to fit the reamer shank.

L₄ dimension

Part Number	d (Reamer shank)	L ₄
FH0 FH1	3.00 - 3.79	23
	3.80 - 4.79	26
	4.80 - 5.49	30
	5.50 - 10.00	35
FH2	8.10 - 10.79	42
	10.80 - 12.09	50
	12.10 - 20.00	55

Floating Reamer Holder

For straight shank reamer
Sleeve



Part Number	d		K _{C11}	Holder size	L ₅	L ₆	D ₂	D ₃	d ₄
	Reamer shank (Exceeding)	Reamer shank (Below)							
FHS0 - φ d	2.99	3.35	2.5	FH0-	18	11	19.5	11	5
	3.35	3.78	2.8		17	10			
	3.78	4.30	3.2		20	13			
	4.30	4.70	3.5		20	13			
	4.70	5.40	4.0		23	16			
	5.40	6.00	4.5		28	21			
	6.00	6.70	5.0		27	20			
	6.70	7.30	5.5		27	20			
	7.30	8.00	6.0		26	19			
FHS1 - φ d	3.99	4.30	3.2	FH1-	20	12	23	13	6
	4.30	4.70	3.5		20	12			
	4.70	5.40	4.0		23	15			
	5.40	6.00	4.5		28	20			
	6.00	6.70	5.0		27	19			
	6.70	7.30	5.5		27	19			
	7.30	8.00	6.0		26	18			
	8.00	8.60	6.5		26	18			
	8.60	9.50	7.0		25	17			
9.50	10.00	8.0	24	16					
FHS2 - φ d	8.09	8.60	6.5	FH2-	33	19	38	26	7
	8.60	9.50	7.0		32	18			
	9.50	10.70	8.0		31	17			
	10.70	12.00	9.0		38	24			
	12.00	13.50	10.0		42	28			
	13.50	14.70	11.0		41	27			
	14.70	16.00	12.0		40	26			
	16.00	17.20	13.0		39	25			
	17.20	18.70	14.0		38	24			
18.70	20.00	15.0	37	23					

• All dimensions shown in millimeters.

Ordering Example

