

Adjustable Adapter Drill socket

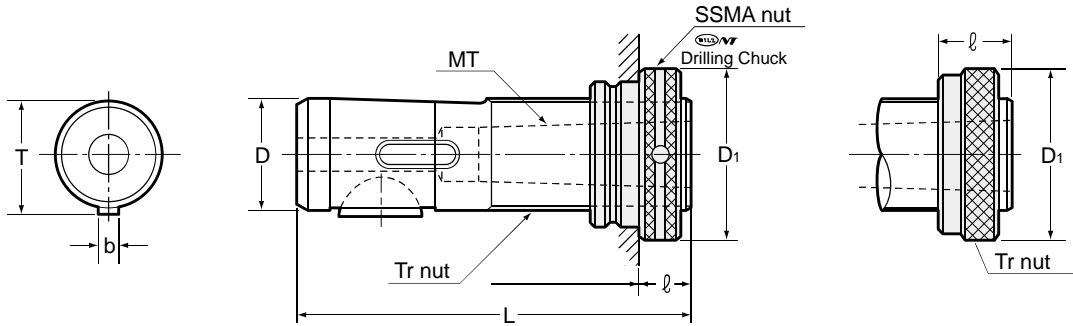
Short Design Type

Application

Drilling and spot facing.

Feature

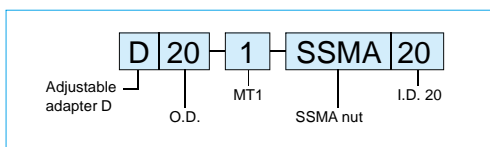
- Both Tr nut type and SSMA nut type are available in many sizes. SSMA nut type is suitable for use with drilling chuck.



Part Number	MT	D	D1±0.2		L	b	T	l	
			SSMA	Tr nut				SSMA	Tr nut
D16- 1 / SSMA 16 Tr16	1	16	26	25	85	5	17.1	9 - 37	12 - 38
D20- 1 / SSMA 20 Tr20	1	20	33	32	88		21.1		
D25- 1 / SSMA 25 Tr25	1	25	40	37	95	6	26.5	10 - 40	12 - 42
	2								
D26- 1 / Tr26	1	26	—	40	95	5	27.5	—	
	2								
D28- 1 / SSMA 28 Tr28	1	28	42	40	95	6	29.5	10 - 40	
	2								
D32- 2 / SSMA 32 Tr32	2	32	47	45	118	8	33.5	10 - 46	14 - 48
	3								
D35- 1 / Tr35	1	35	—	50	118	6	36.5	—	
	2								
	3								
D36- 2 / SSMA 36 Tr36	2	36	54	50	118	8	37.5	10 - 46	
	3								
D48- 2 / SSMA 48 Tr48	2	48	72	67	144	10	49.9	14 - 61	18 - 63
	3								
	3-8								
	4-8								

• All dimensions shown in millimeters.

Ordering Example



Adjustable Adapter Drill socket

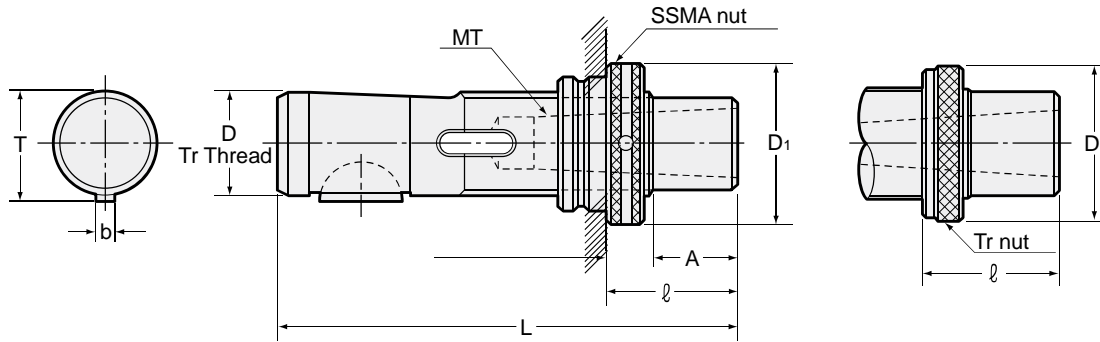
Long Design Type

Application

Drilling and spot facing.

Feature

- Both Tr nut type and SSMA nut type are available in many sizes. SSMA nut type is suitable for use with drilling chuck.



Part Number	MT	A	D	D _{1±0.2}		L	b	T	ℓ		
				SSMA	Tr nut				SSMA	Tr nut	
F16-1-	1	25	16	26	25	110	5	17.1	SSMA 16 Tr16	34 - 62	37 - 63
										59 - 87	62 - 88
										84 - 112	87 - 113
										109 - 137	112 - 138
F20-1-	1	25	20	33	32	113	5	21.1	SSMA 20 Tr20	34 - 62	37 - 63
										59 - 87	62 - 88
										84 - 112	87 - 113
										109 - 137	112 - 138
F25-1-	1	25	25	40	37	120	6	26.5	SSMA 25 Tr25	35 - 65	37 - 67
										60 - 90	62 - 92
										85 - 115	87 - 117
										110 - 140	112 - 142
F25-2-	2	25	25	40	37	120	6	26.5	SSMA 25 Tr25	35 - 65	37 - 67
										60 - 90	62 - 92
										85 - 115	87 - 117
										110 - 140	112 - 142
F26-1-	1	25	26	—	40	120	5	27.5	Tr26	—	37 - 67
										—	62 - 92
										—	87 - 117
										—	112 - 142
F26-2-	2	25	26	—	40	120	5	27.5	Tr26	—	37 - 67
										—	62 - 92
										—	87 - 117
										—	112 - 142
F28-1-	1	25	28	42	40	120	6	29.5	SSMA 28 Tr28	35 - 65	37 - 67
										60 - 90	62 - 92
										85 - 115	87 - 117
										110 - 140	112 - 142
F28-2-	2	25	28	42	40	120	6	29.5	SSMA 28 Tr28	35 - 65	37 - 67
										60 - 90	62 - 92
										85 - 115	87 - 117
										110 - 140	112 - 142
F32-2-	2	30	32	47	45	148	8	33.5	SSMA 32 Tr32	40 - 76	44 - 78
										70 - 106	74 - 108
										100 - 136	104 - 138
										130 - 166	134 - 168

• All dimensions shown in millimeters.

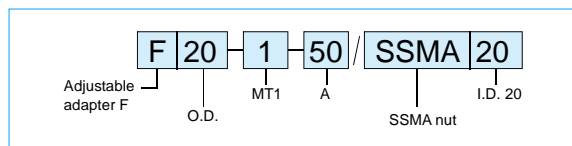
Adjustable Adapter Drill socket

Long Design Type

Part Number	MT	A	D	D _{1±0.2}		L	b	T	∅	
				SSMA	Tr nut				SSMA	Tr nut
F32-3-	3	30	32	47	45	148	8	33.5	40 - 66	44 - 78
		60				178			70 - 106	74 - 108
		90				208			100 - 136	104 - 138
		120				238			130 - 166	134 - 168
F35-2-	2	30	35	—	50	148	6	36.5	—	44 - 78
		60				178			—	74 - 108
		90				208			—	104 - 138
		120				238			—	134 - 168
F35-3-	3	30	35	—	50	148	6	36.5	—	44 - 78
		60				178			—	74 - 108
		90				208			—	104 - 138
		120				238			—	134 - 168
F36-2-	2	30	36	54	50	148	8	37.5	40 - 66	44 - 78
		60				178			70 - 106	74 - 108
		90				208			100 - 136	104 - 138
		120				238			130 - 166	134 - 168
F36-3-	3	30	36	54	50	148	8	37.5	40 - 66	44 - 78
		60				178			70 - 106	74 - 108
		90				208			100 - 136	104 - 138
		120				238			130 - 166	134 - 168
F48-3-	3	40	48	72	67	184	10	49.9	54 - 101	58 - 103
		80				224			94 - 141	98 - 143
		120				264			134 - 181	138 - 183
		160				304			174 - 221	178 - 223
F48-4-	4	40	48	72	67	184	10	49.9	54 - 101	58 - 103
		80				224			94 - 141	98 - 143
		120				264			134 - 181	138 - 183
		160				304			174 - 221	178 - 223
F48-3-	3	40-8	48	72	67	184	8	49.9	54 - 101	58 - 103
		80-8				224			94 - 141	98 - 143
		120-8				264			134 - 181	138 - 183
		160-8				304			174 - 221	178 - 223
F48-4-	4	40-8	48	72	67	184	8	49.9	54 - 101	58 - 103
		80-8				224			94 - 141	98 - 143
		120-8				264			134 - 181	138 - 183
		160-8				304			174 - 221	178 - 223

• All dimensions shown in millimeters.

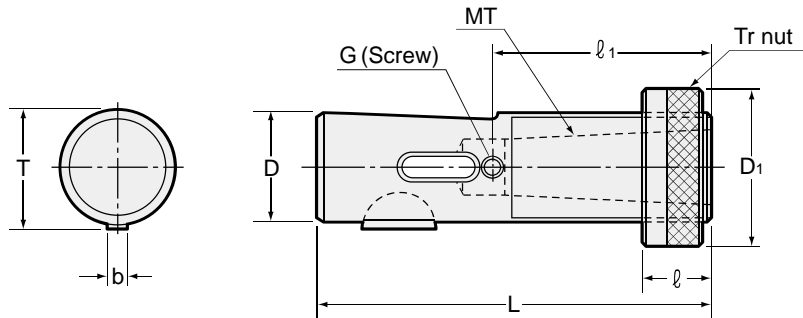
Ordering Example



Adjustable Adapter Drill socket

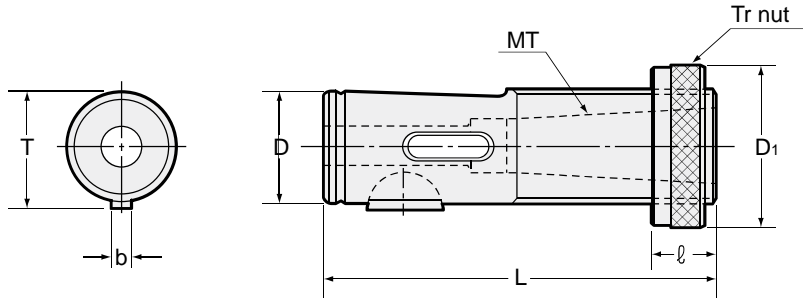
H . M Series

H Series



Part Number	MT	D	D1± 0.2	L	b	T	ℓ	ℓ ₁	G
H- 11810 / 11811 / 11812 / 11813 / 11814 Tr18H	1	18	32	102	4	19.5	12 - 52	48	
				112			12 - 62		
				122			12 - 72		
				132			12 - 82		
				142			12 - 92		
H- 12610 / 12611 / 12612 / 12613 / 12614 Tr26H	1	26	40	102	5	27.5	12 - 52	48	M6 P=1
				112			12 - 62		
				122			12 - 72		
				132			12 - 82		
				142			12 - 92		
H- 22610 / 22611 / 22612 / 22613 / 22614 Tr26H	2	26	40	102	5	27.5	12 - 52	56.3	
				112			12 - 62		
				122			12 - 72		
				132			12 - 82		
				142			12 - 92		

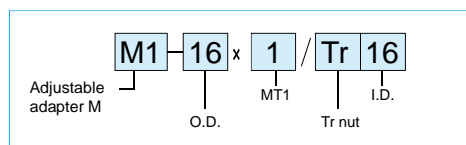
M Series



Part Number	MT	D	D1± 0.2	L	b	T	P	ℓ
M1- 16x 1 / Tr16	1	16	25	78	4	17.5	1.5	12 - 38
M1- 20x 1 / Tr20	1	20	32	78	5	22	2.0	12 - 38
M1- 26x 1 / 26x 2 / Tr26	1	26	40	94	5	28	2.0	12 - 43
	2							
M1- 28x 1 / 28x 2 / Tr28	1	28	40	94	5	30	2.0	12 - 43
	2							
M1- 32x 2 / 32x 3 / Tr32	2	32	45	117	6	34.4	2.0	14 - 47
	3							

• All dimensions shown in millimeters.

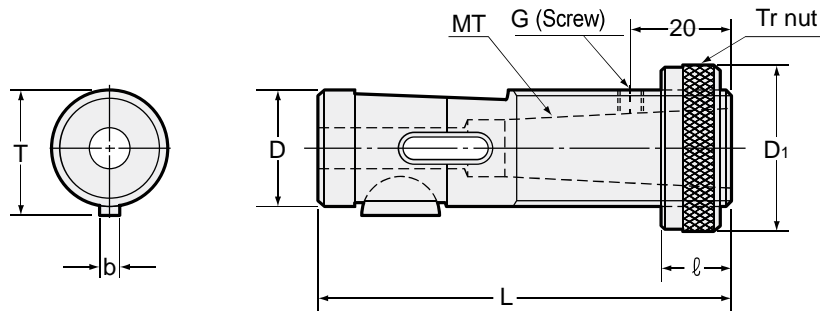
Ordering Example



Adjustable Adapter Drill socket

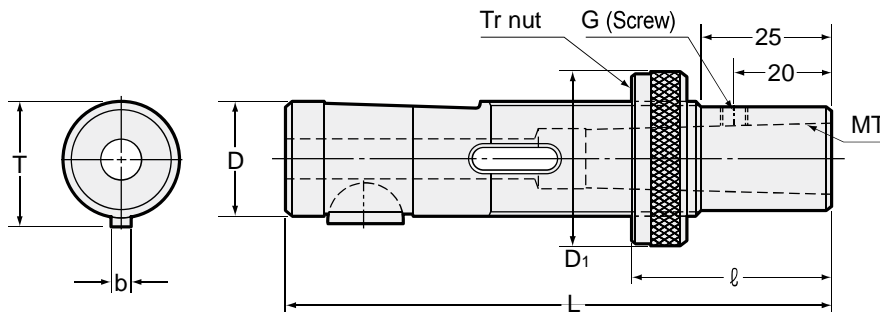
N Series

N Series



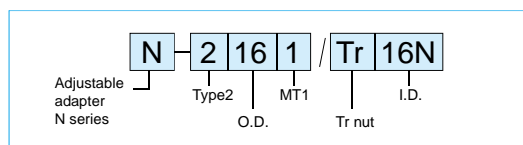
Part Number	MT	D	D _{1±0.2}	L	b	T _{-0.2} ⁰	ℓ	G
N- 1161 / Tr16N	1	16	25	85	4	17.5	12 - 37	M5 P=0.8
N- 1201 / Tr20N	1	20	32	85	5	22.0	12 - 37	M5 P=0.8
N- 1241 / Tr24N	1	24	37	85	5	26.0	12 - 37	M5 P=0.8
N- 1261 / Tr26N	1	26	40	96	7	28.6	12 - 43	M6 P=1.0
	2							
N- 1302 / Tr30N	2	30	45	100	7	32.6	14 - 46	M6 P=1.0
N- 1362 / Tr36N	2	36	50	118	10	39.2	14 - 54	M6 P=1.0
	3							
N- 1483 / Tr48N	3	48	67	142	12	51.2	18 - 64	M6 P=1.0
	4							

N Series



Part Number	MT	D	D _{1±0.2}	L	b	T _{-0.2} ⁰	ℓ	G
N- 2161 / Tr16N	1	16	25	110	4	17.5	38 - 62	M5 P=0.8
N- 2201 / Tr20N	1	20	32	110	5	22.0	38 - 62	M5 P=0.8
N- 2241 / Tr24N	1	24	37	110	5	26.0	38 - 62	M5 P=0.8
N- 2261 / Tr26N	1	26	40	121	7	28.6	38 - 68	M6 P=1.0
	2							
N- 2302 / Tr30N	2	30	45	125	7	32.6	40 - 71	M6 P=1.0
N- 2362 / Tr36N	2	36	50	143	10	39.2	40 - 79	M6 P=1.0
	3							
N- 2483 / Tr48N	3	48	67	167	12	51.2	44 - 89	M6 P=1.0
	4							

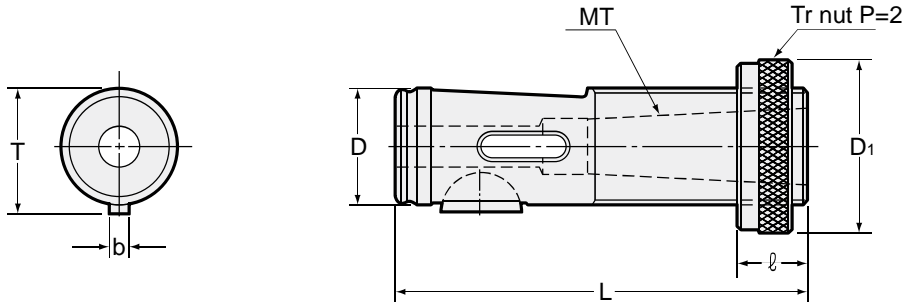
Ordering Example



Adjustable Adapter Drill socket

T Series

T Series



Part Number	MT	D	D ₁ ± 0.2	L	b	T ⁰ _{-0.2}	ℓ
T -1x 16 / Tr16x 2	1	16	25	80	3	17	12 - 35
T -1x 19 / Tr19	1	19	32	80	5	21	12 - 35
T -1x 22 / Tr22	1	22	32	92	5	24	12 - 40
	2						
T -1x 26 / Tr26	1	26	40	102	5	28	12 - 45
	2						
T -3x 35 / Tr35	3	35	50	122	7	38	14 - 52
T -4x 48 / Tr48	4	48	67	152	7	51	18 - 62

Ordering Example

